

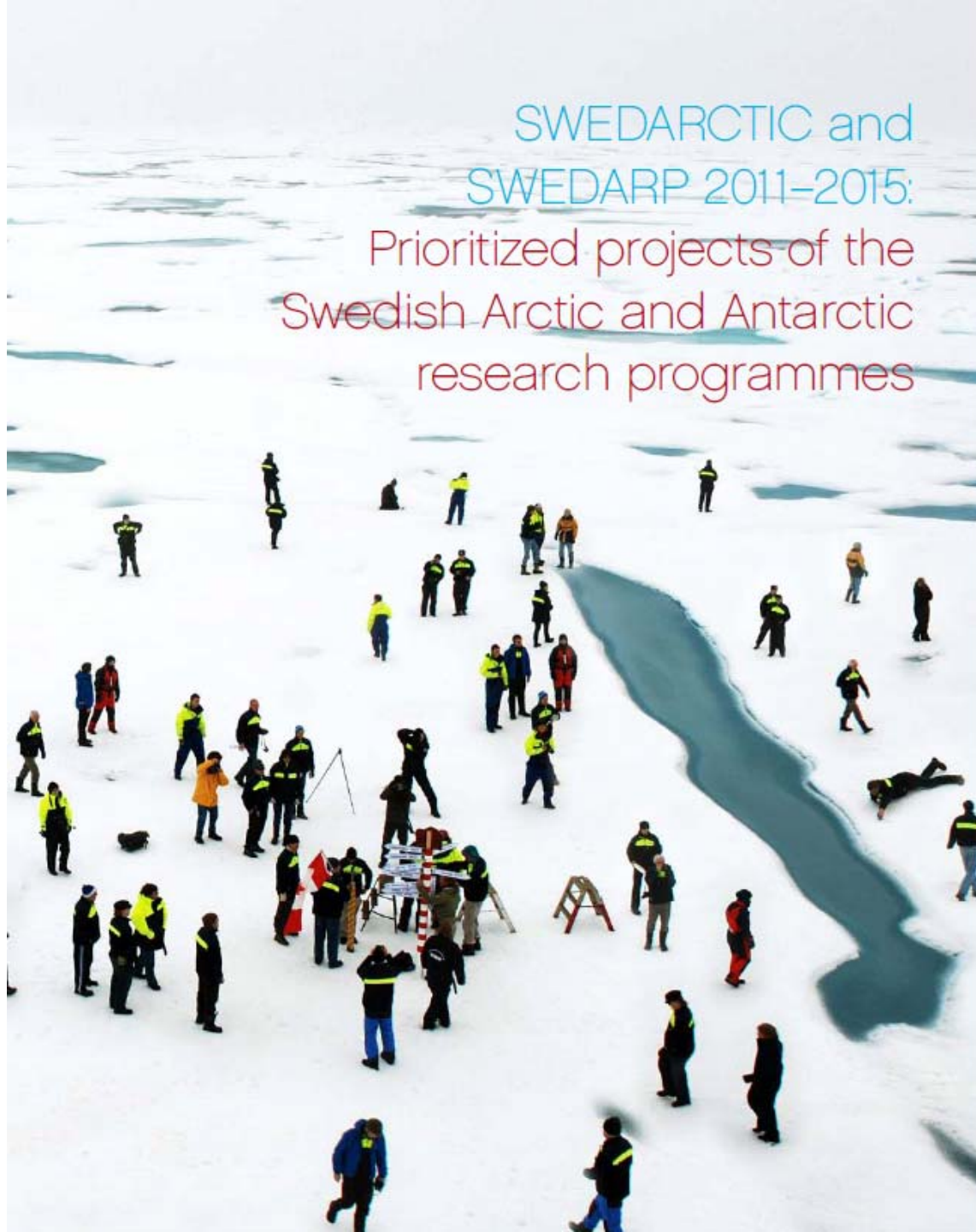


Research Programmes

- SWEDARP
Swedish Antarctic Research
Programme
- SWEDARCTIC
Swedish Arctic Research
Programme



SWEDARCTIC and
SWEDARP 2011–2015:
Prioritized projects of the
Swedish Arctic and Antarctic
research programmes



Vetenskapsrådet

Abisko Research Station 2011

*Continuation of projects and monitoring
New scientific committee to be formed*



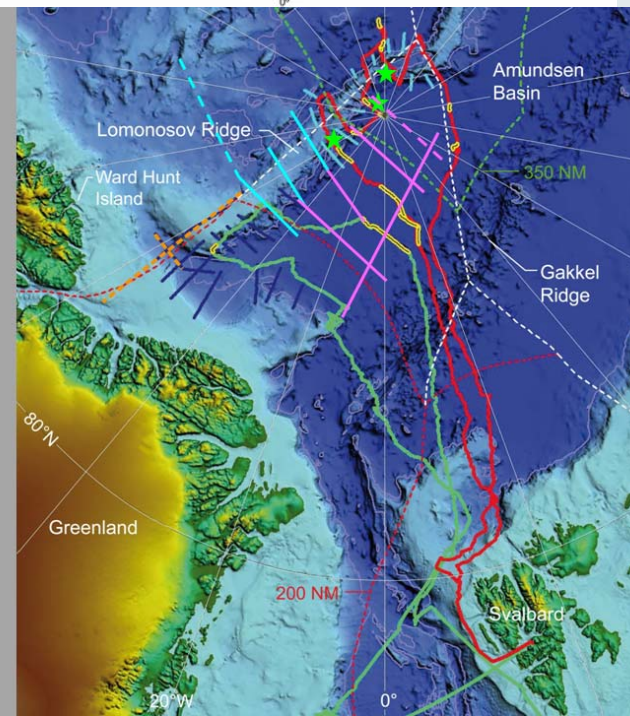
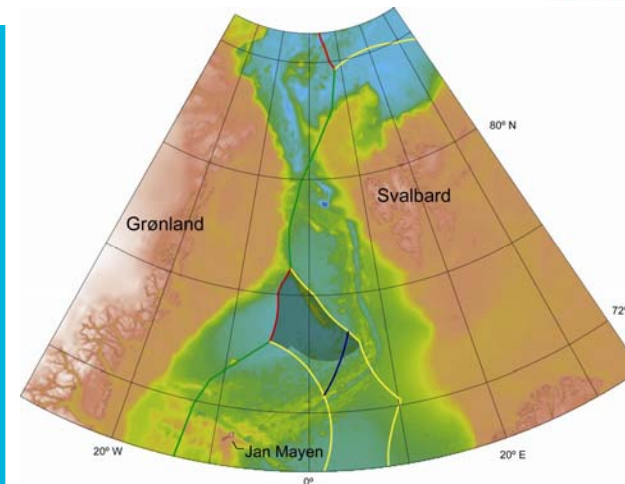
Taymyr 2012

Geology 'APEX' and 'PLATES & GATES'



Oden 2011 'EAGER' – East Greenland Ridge

ODEN 2012 'LOMROG III' – Lomonosov Ridge



LOMROG III

Conceptual plan – details to be developed in autumn

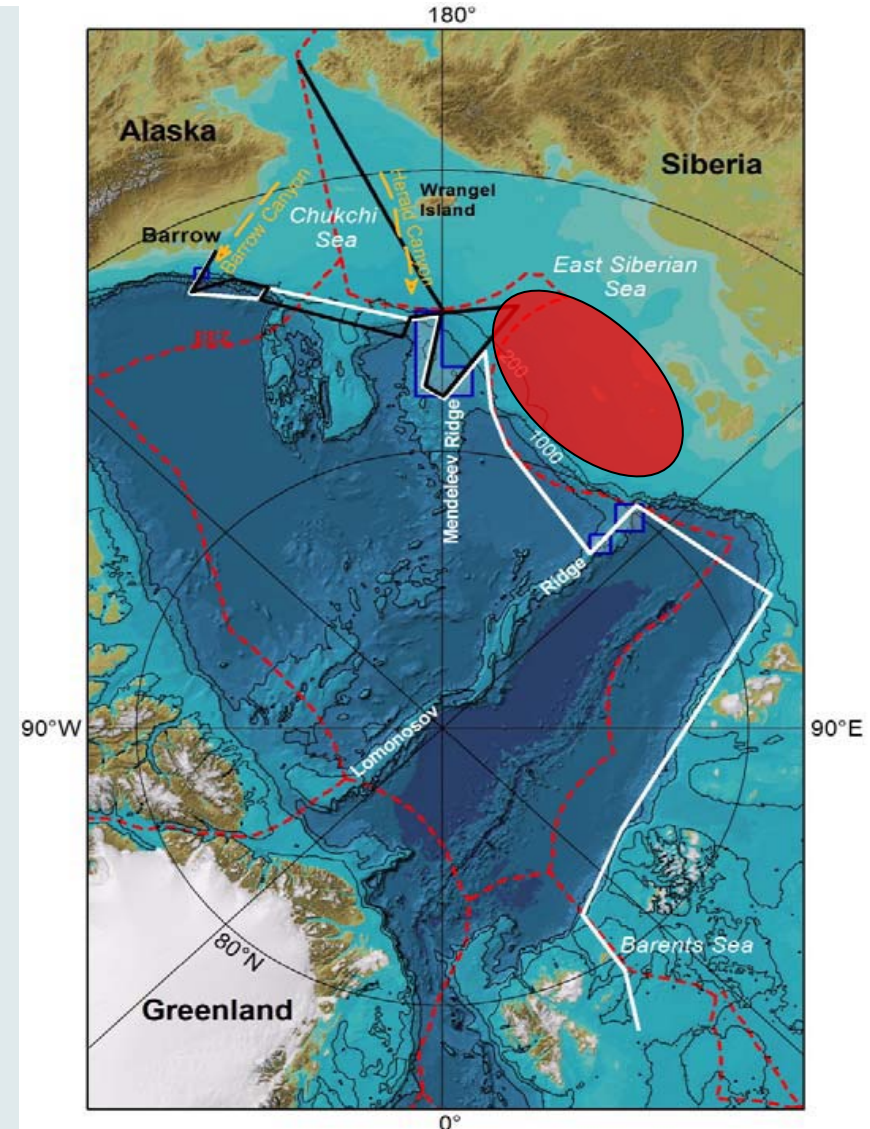
Turquoise – Bathymetry
Violet – Seismic
Stars – Sampling

Stippled turquoise lines indicate possible extension of the bathymetric program – budget, time and ice permitting.

Green – LOMROG I, 2007
Dark blue – Spring 2009
Red – LOMROG II, 2009
Yellow – existing seismic

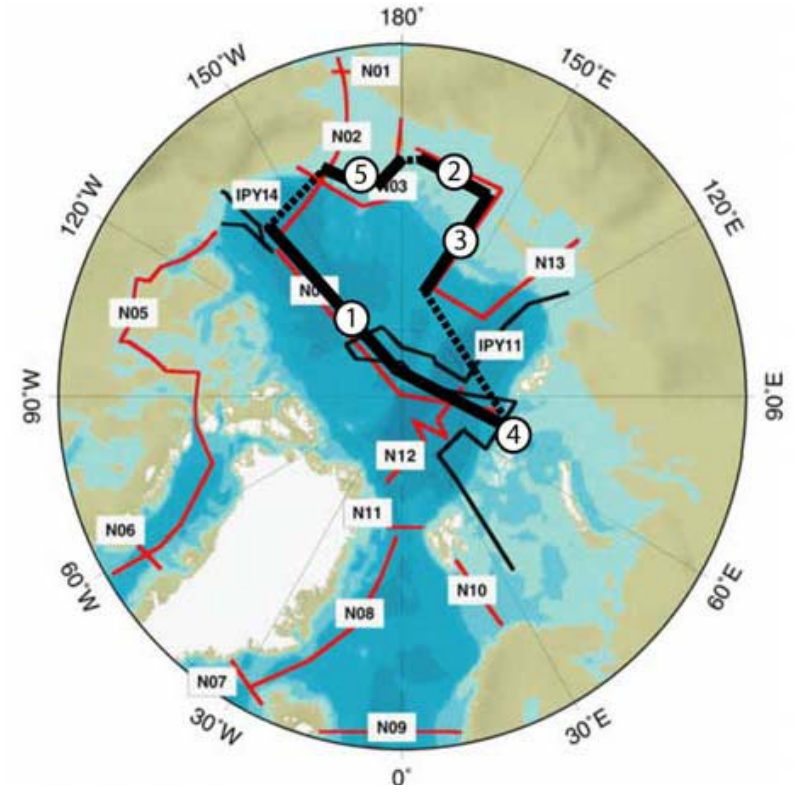
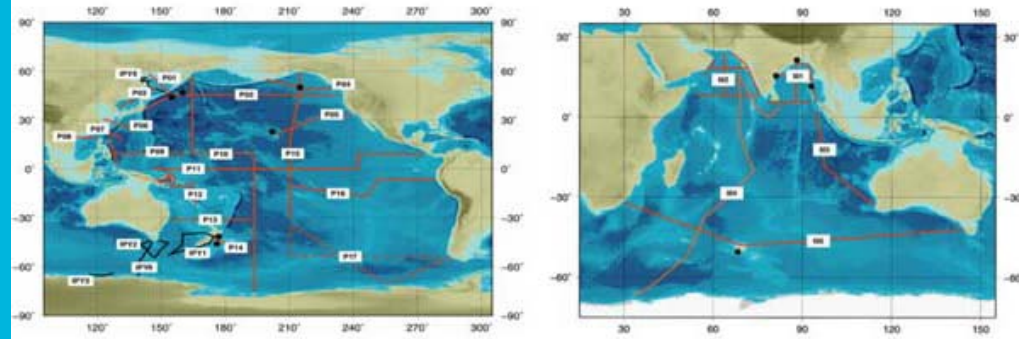
Oden 2014 (or so) 'SWE-C3'

Swedish Arctic Ocean Investigation
of Climate-Cryosphere-Carbon
Interactions



Oden 2015 (or so) 'GEOTRACES'

Trace metal biogeochemistry



Prioritized Swedish polar research projects

Project leader	Title
Victoria Pease, SU	Tectonic evolution of the Amerasia Basin and CALE
Per Möller, LU	Taymyr revisited – a quest for former Eurasian Ice Sheet margins and mega-fauna extinction during the last glacial cycles
Göran Thor, SLU	Biomonitoring by re-examination of lichens and mosses within extant permanent plots in the Antarctic
Lars Holmer, UU	Hot fossils in a cold land: early Cambrian stem group bilaterian animals from Antarctica
Lars Arneborg, GU	Ocean induced glacier melting in Greenland
Sheila Kirkwood, IRF	MARA – Moveable Atmospheric Radar for Antarctica : 2011 and beyond
Pauline Snoeijs, SU	Marine diazotrophic diversity in the Polar Oceans and its contribution to global nitrogen cycling
Henrik Kylin, SLU	Persistent Organic Pollutants and current-use pesticides in a Changing Arctic (POPCA)
Anna Wåhlin, GU	Physical oceanography of the Amundsen Sea, Antarctica
Henning Lorenz, UU	Neoproterozoic orogeny in southern and central Svalbard (NOA-Svalbard)
Kajsa Tönnesson, GU	Oden LOMROG III Expedition: Zooplankton? Their role in Arctic food webs
Richard Gyllencreutz, SU	The Lomonosov Ridge off Greenland: a Rosetta Stone for unifying Amerasian and Eurasian stratigraphies?
Thomas Mörs, NRM	The frozen Garden of Eden – Paleogene mammals from Seymour Island, Antarctica: evidence for Gondwanan biogeography and palaeoclimate

Prioritized Swedish polar research projects

Project leader	Title
Örjan Gustafsson, SU	International Siberian Shelf Study (ISSS): Permafrost degradation and greenhouse gas releases on the outer East Siberian Sea
Michael Tjernström, SU	Arctic Summer Cloud Experiment - ASCE
Leif Anderson, GU	Ridge and Slope Study of the Eastern Arctic Ocean (RISSEARC): Marine chemistry project
Per Andersson, SU	The dynamics of trace metal biogeochemistry in the Arctic Ocean: A GEOTRACES cruise using the icebreaker Oden
Martin Jakobsson, SU	Ridge and Slope Study of the Eastern Arctic Ocean (RISSEARC): Marine geology and geophysics
Arjen Stroeven, SU	Changes in vertical ice extent in Dronning Maud Land as recorded by in situ produced cosmogenic radionuclides
Caroline Leck, SU	The life cycle of clouds in the high arctic summer with linkages to the microbiological life in ocean and ice