

A report on developments with the PRIC and CHINARE

Huigen Yang
Polar Research Institute of China



<http://www.pric.gov.cn>

-
1. New developments with the PRIC
 2. Capacity building of the CHINARE
 3. The 4th Arctic cruise of CHINARE

-
- **PRIC** (Polar Research Institute of China) **in Shanghai** collaborating with the **CAAA in Beijing** plays the roles of national operator for Chinese research activities in polar regions

PRIC missions

1. to carry out scientific, **engineering and strategic** studies,
2. to implement **environments monitoring**,
3. to provide management and sharing service with data, samples and information,
4. to operate research vessel and stations and provide logistic supports to research expeditions, and
5. to promote international scientific and logistic cooperation in polar regions

People in PRIC

Permanent positions increased from 145 to **230** since 2009.

- Scientists and staff 144 → **158**,
- Postdoctors: 6 → **8**
- PhD students: 20 → **25**



PRIC Campuses



The Jinqiao Campus in Shanghai downtown





The Caolu Campus by Yangtze River



PRIC Main Building



Pier for Polar ships



-
1. New developments with the PRIC
 2. Capacity building of the CHINARE
 3. The 4th Arctic cruise of CHINARE

Antarctic Great Wall Station



New facilities at Great Wall



Labs and offices



Sports center



VSAT antenna

Newly constructed 1,792 m²,
including a sub-Antarctic bio-
ecosystem laboratory and a VSAT
communication link

Antarctic Zhongshan Station



New facilities at Zhongshan

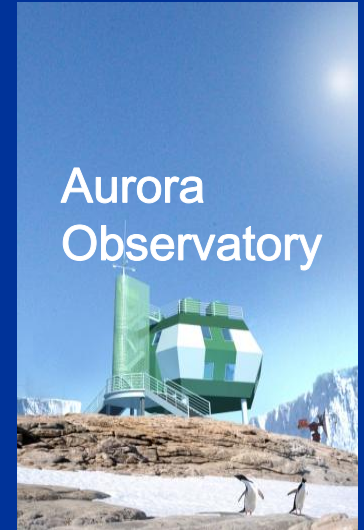
Comprehensive building



VSAT antenna



Aurora
Observatory



Comprehensive warehouse



Garage



Antarctic Kunlun Station

Kunlun ,Chinese 1st inland station was set up at Dome A on the Antarctic ice sheet 27 Jan 2009.



Renovation of the R/V **Xuelong**



The new icebreaker under design



Specification for the New Icebreaker

Main function

Displacement

Icebreaking ability

Berths

Labs

Construction period

Marine investigations

~8000 T

Pole 10

90

~ 500 m²

~ 5 y

-
1. New developments with the PRIC
 2. Capacity building of the CHINARE
 3. The 4th Arctic cruise of CHINARE

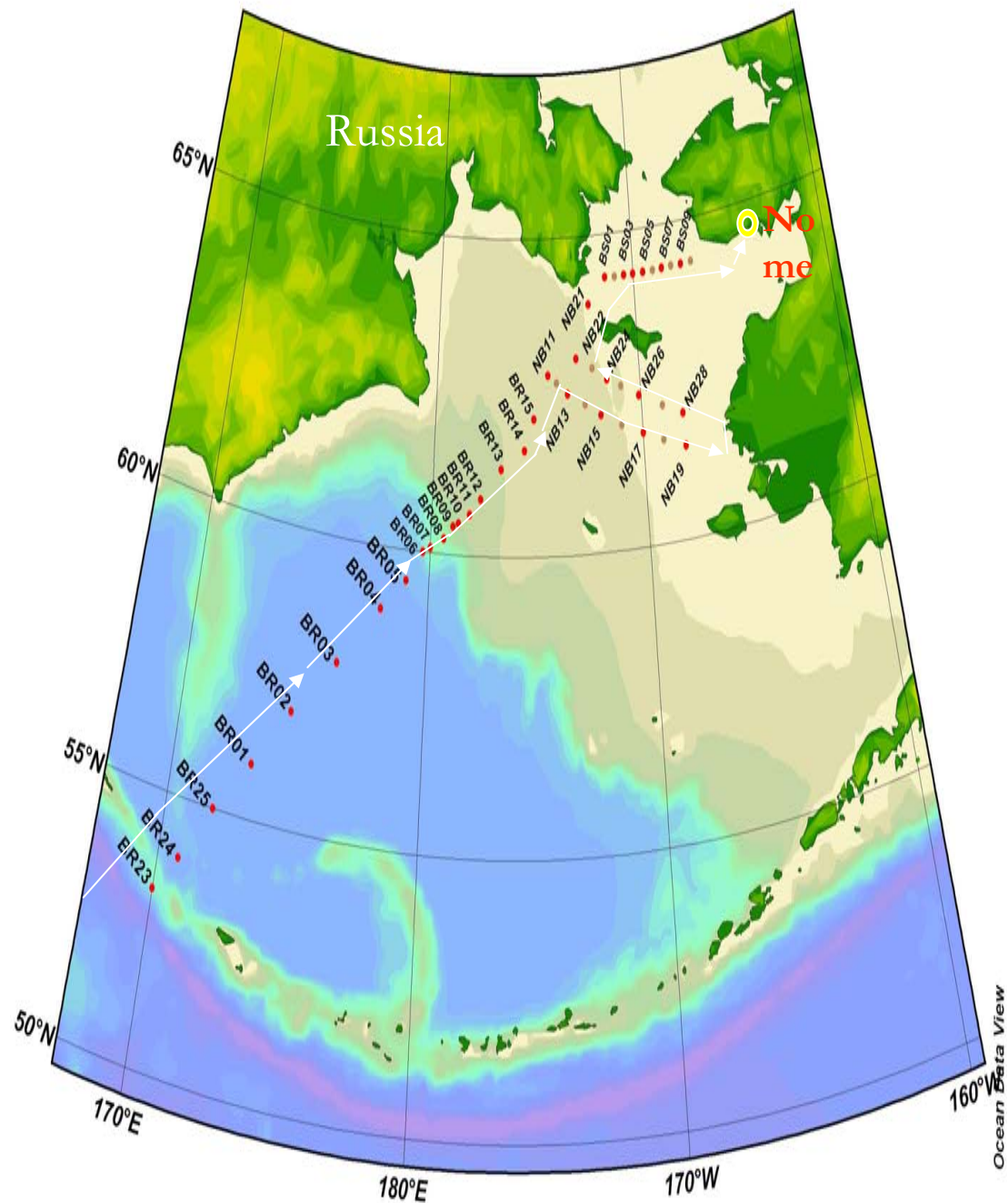
CHINARE:

Chinese National Antarctic/Arctic Research Expedition

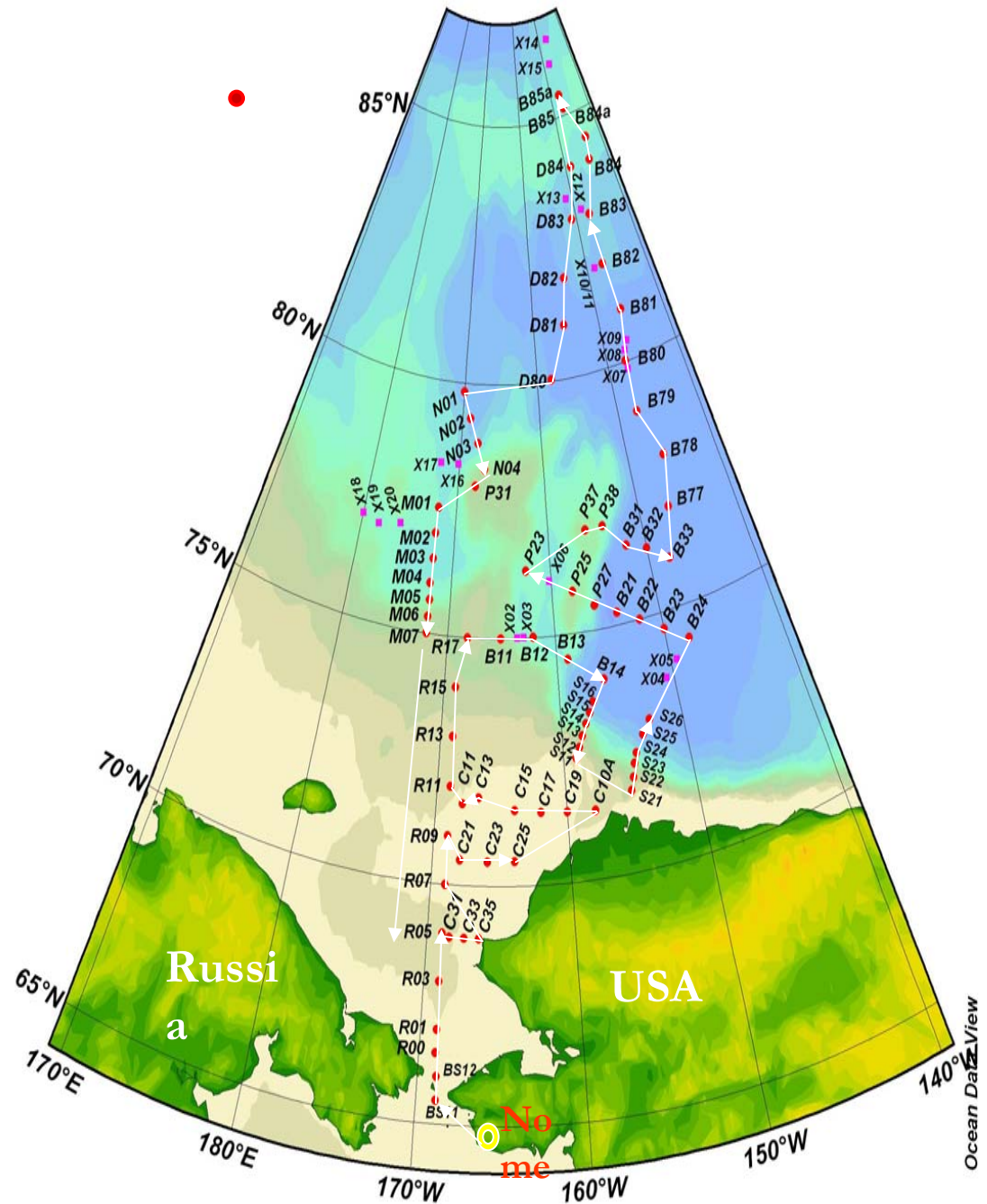
- 26 CHINARE's to the Antarctic since 1984.
- 3 CHINARE cruises into the Arctic Ocean in 1999, 2003 and 2008 respectively and **the 4th CHINARE Arctic cruise in this year**
- 6 years of station observation at Ny Alesund on Svalbard since 2004;

Xuelong 2008 Cruise into the Arctic Ocean

The 2008 Cruise departed from Shanghai on July 10, called on Nome on 25 July and came back to Shanghai on Sept. 24.



- CTD stations 130
- LADCP stations 100
- Mooring sets 9
- Water/ice sampling 129
- Sediment cores 29



Xuelong 2010 cruise into the Arctic Ocean

Cruise objectives

- **Characteristics and mechanisms of sea ice rapid changes in the Arctic ocean**
- **Responses of marine ecosystems to sea ice rapid changes in the Arctic ocean**

Cruise route

**Xuelong will
depart from
Xiamen on July
1, call on Nome
on 15 July and
come back to
Shanghai Sept
23.**



- 100 stations
- 1 mooring system
- 1 ice camp in Chukchi Plateau





**Thanks for
your kind attentions**