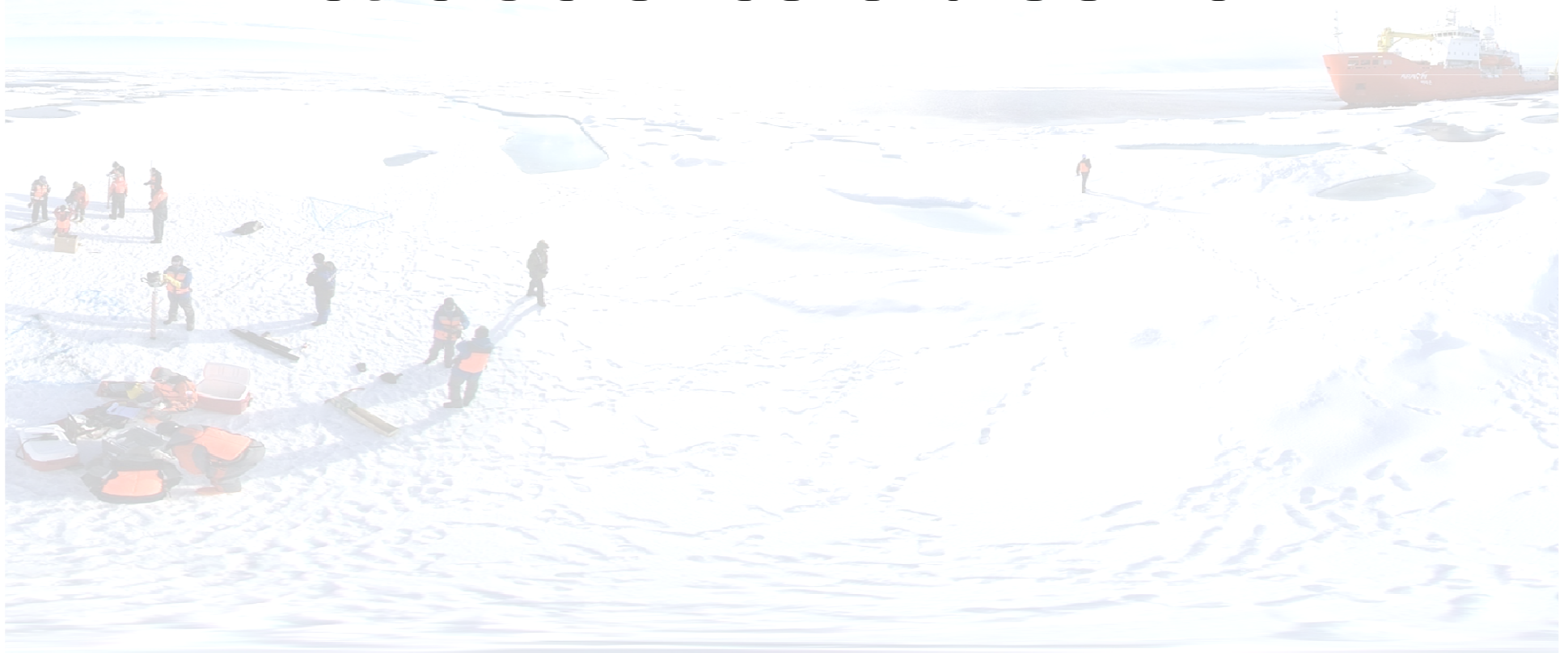


KOPRI's Arctic Research Plan in 2012



Korea Polar Research Institute

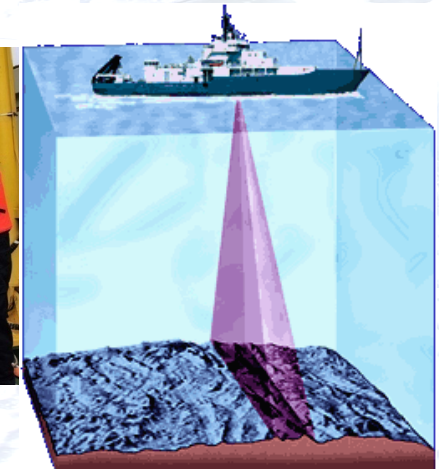
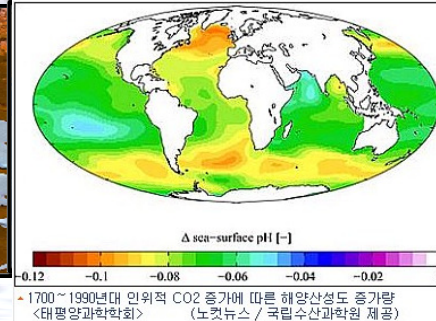
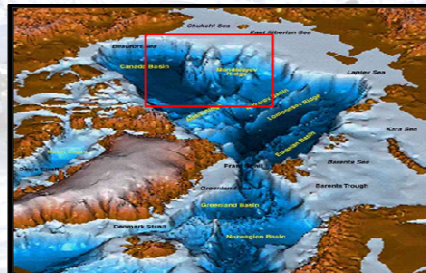
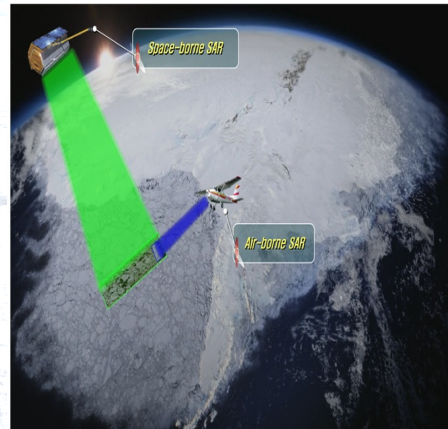
Arctic Science Cruise 2012



Korea Polar Ocean in Rapid Transition (K-PORT)



- Arctic Ocean Survey mainly focused in Chuchi Sea
- Monitoring sea ice variations
- Arctic Ecosystem Changes
- Arctic Ocean Acidification

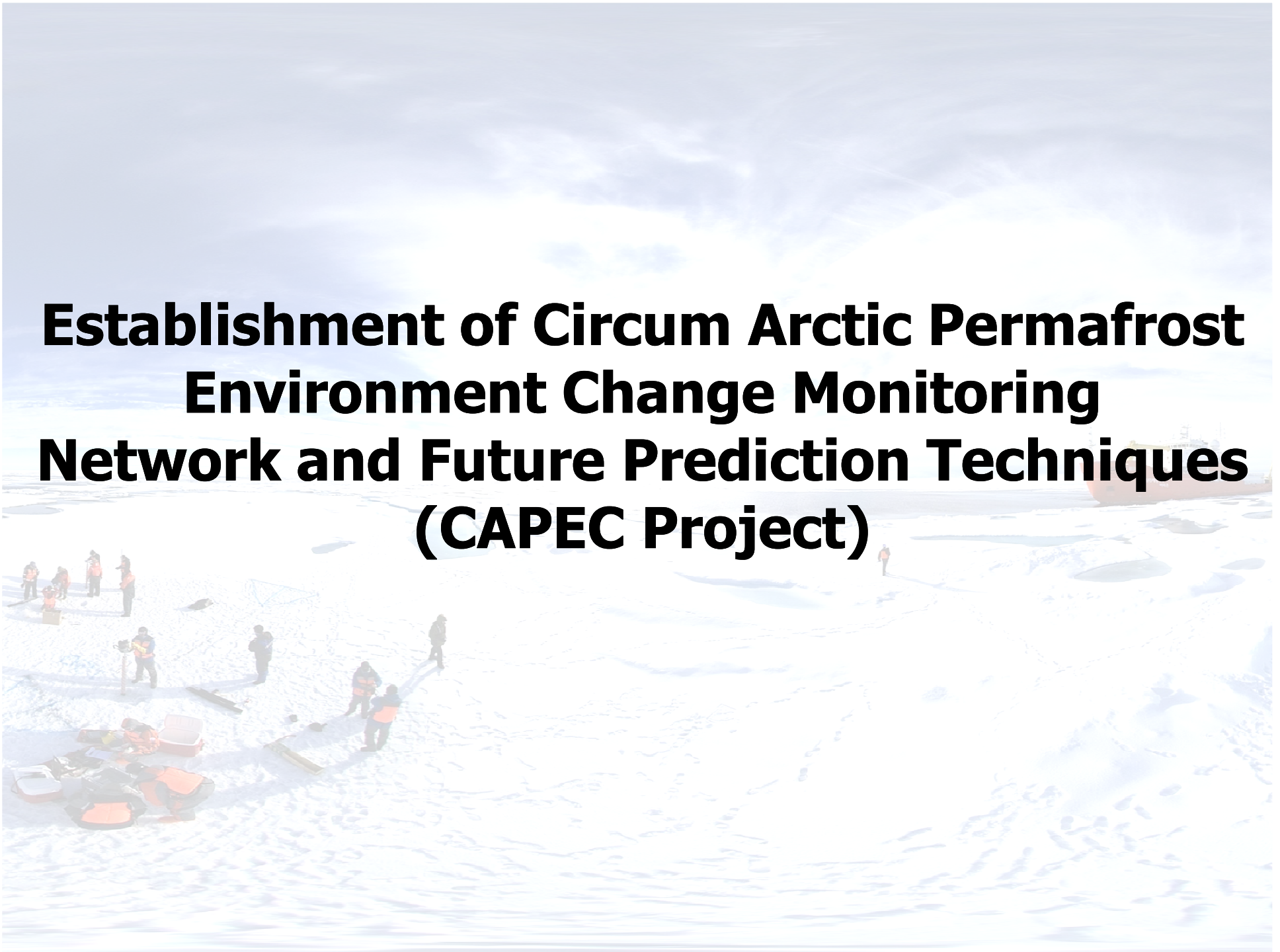


Arctic Science Cruise: Overview

- Purpose: Multidisciplinary studies to monitor ongoing environmental changes and its effects on the Chukchi Sea, western Arctic Ocean
- Period: 01 Aug ~ 10 Sep. 10, 2012 (Nome to Nome)
- Participants: 51 (Korea, US, UK, Germany, Russia, Japan, China)
- Research fields:
 - Atmospheric observation
 - CO2 systems in water column
 - Satellite Remote Sensing
 - Hydrographic survey
 - Microbes & Plankton ecology
 - Sea ice study
 - Melt pond (ice algae) study
 - Marine Geology and Seismic survey
 - Paleoceanography



Establishment of Circum Arctic Permafrost Environment Change Monitoring Network and Future Prediction Techniques (CAPEC Project)



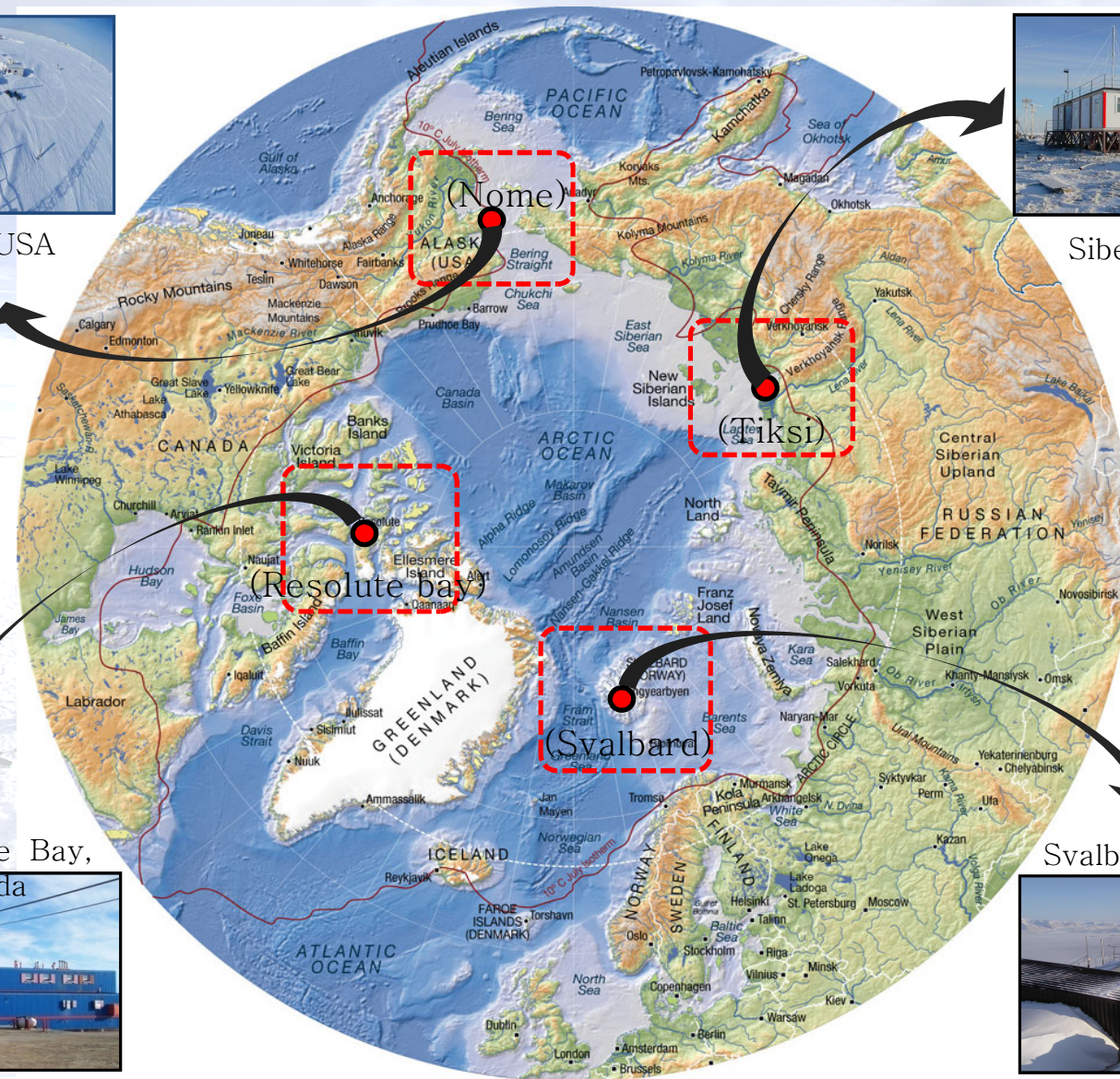
CAPEC Project: Monitoring Bases



Alask, USA



Siberia, Russia



Cambridge Bay,
Canada



Svalbard, Norway

Thank you



Arctic Science Cruise: Survey Areas

- Box/MUC & GC : 15 Sites
- Box/MUC : 15 Sites
- Sub Bottom Profile line

□ Seismic survey area(mapping)

○ Sea Ice station

C1~C30: CTD station

△ Mooring station

