



MOSAiC

Multidisciplinary drifting Observatory for the Study of Arctic Climate



Update about MOSAiC,
the
**Multidisciplinary drifting
Observatory
for the Study of Arctic Climate**

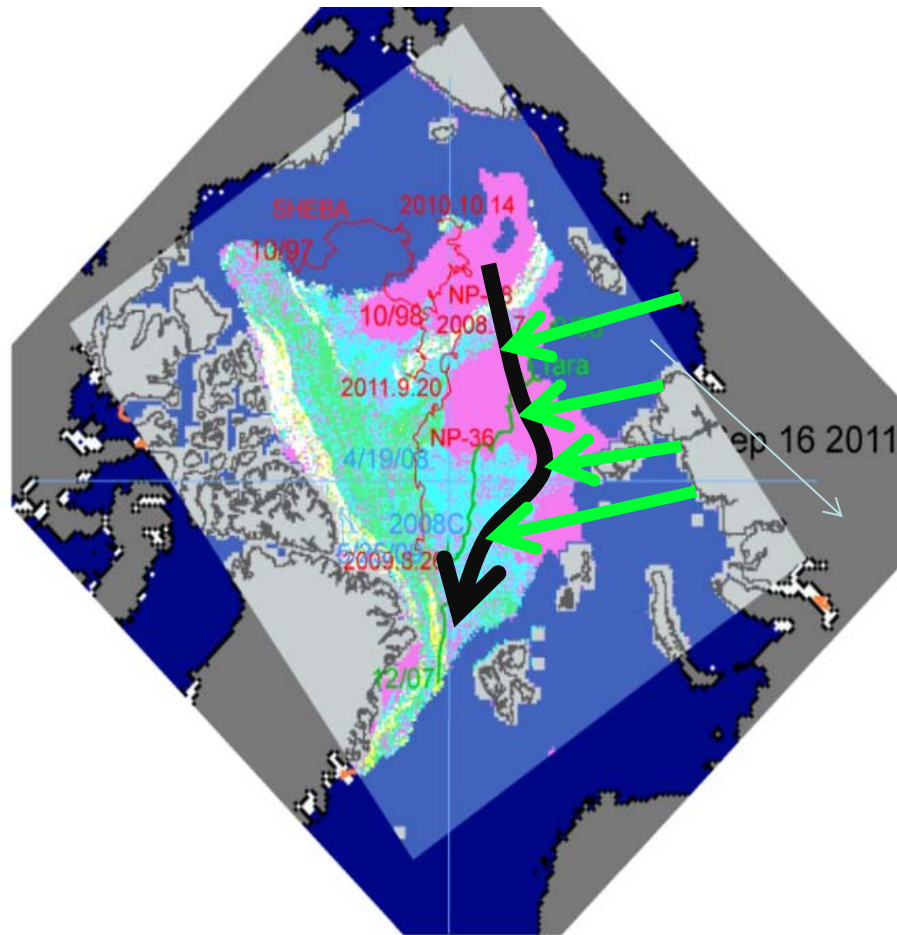
MOSAiC

Multidisciplinary drifting Observatory for the Study of Arctic Climate



- MOSAiC project was introduced at last FARO meeting by H. Miller, see http://faro-arctic.org/fileadmin/Resources/DMU/GEM/faro/2014_Miller_MOSAIC_PLANS.pdf
- Project preparation is ongoing:
 - Closed workshop on Sunday at ASSW
 - Preparation of Implementation workshop
- Remaining issue: Who can provide support icebreaking vessel(s) during winter 2018/19 ?

MOSAiC ice flow drift



September 2011 sea ice extent
and ice age NSIDC

Annual cycle with Polarstern

October 2018-October 2019

Second Russian icebreaker

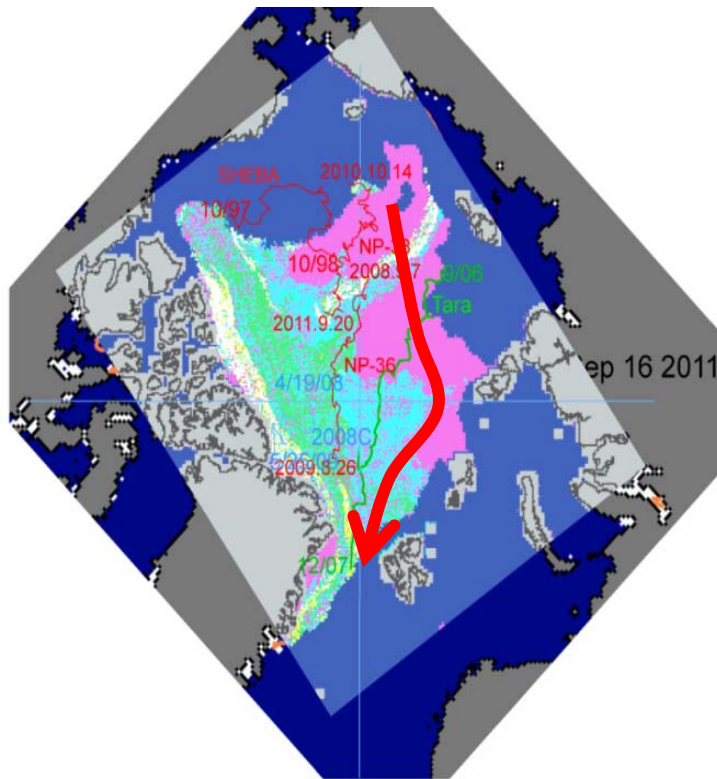
Fuel, food supply and staff
exchange 4 times

- December
- February
- April
- June

Transect measurements
(biology, ocean, atmosphere)
during cruises

Charter costs 10-15 Mill. Euro

MOSAiC Drift → Next steps



- AWI logistical feasibility study for MOSAIC drift was made
- Second RV for maintenance required
- Submission of MOSAIC_Polarstern proposal in September 2014 Dethloff et al.
- AWI decision expected in May 2015
- MOSAIC science plan
 - Shupe et al. under review 2015
 - Array of RVs including MIRAI
- Linkages ICARPIII, YOPP, CLiC
- Funding EU HORIZON 2020 Call in 2016?
- Proposals to NSF → Shupe et al 2014
- Polar Research Progress through Optimal Integration of Science with European Society (EU_POLARNet) coordinated by N. Biebow, AWI