

# Swedish Arctic Research Operations

Swedish Polar Research Secretariat  
Ulf Jonsell

on behalf of Magnus Augner

FARO 2015



**POLARFORSKNINGS  
SEKRETARIATET**  
SWEDISH POLAR RESEARCH SECRETARIAT



FARO  
2015-04-25

SWEDISH NATIONAL  
POLAR RESEARCH PROGRAMMES  
– 2014 AND BEYOND

SVENSKA NATIONELLA  
POLARFORSKNINGSPROGRAM  
– 2014 OCH FRAMÅT

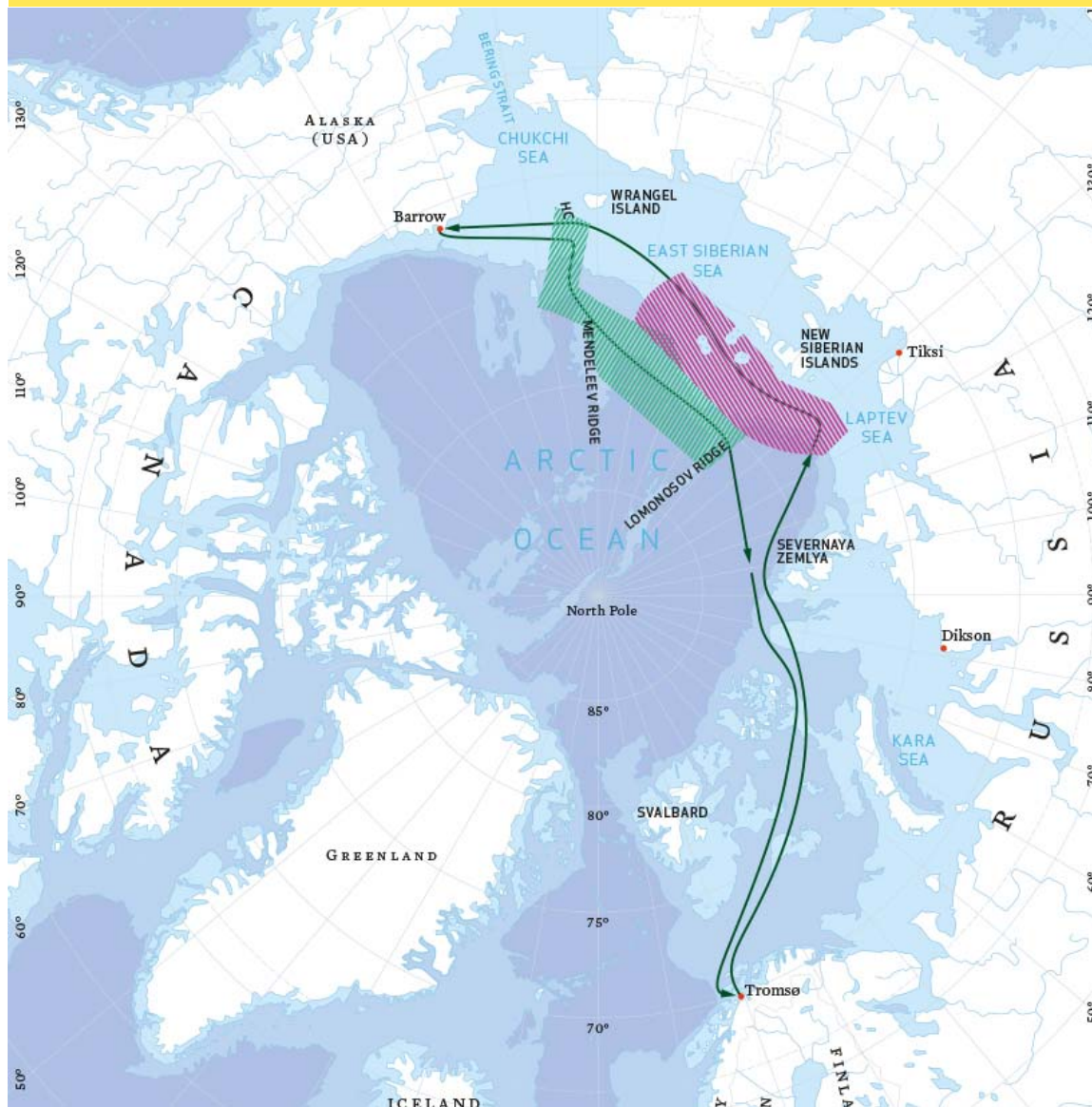


# MAJOR EXPEDITION 2014



## SWERUS-C3

- » A Swedish/Russian/American research expedition
- » Truly international - scientists from 9 countries
- » Investigating the interactions between cryosphere, carbon and climate (C3)
- » The northern stretches of the Laptev Sea, the East Siberian Sea and the Chukchi Sea



# Expedition route

Leg 1: From permafrost thawing to the venting of greenhouse gases

Leg 2: From warming seawater and shrinking sea ice to venting of greenhouse gases

# Oden 2015 and beyond

Emerging U.S.-Swedish  
collaboration on the use of I/B  
*Oden* in the high Arctic

- Workshop March 30 – April 1  
2015.
- First pilot cruise 2015 to  
Petermann Glacier, NV  
Greenland
- Second pilot cruise 2017  
(2018) to the high Arctic



# Oden 2015

## Petermann Glacier

- Based on an NSF funded project:  
"Petermann Paleoceanography & Paleoclimatology"  
PI: Alan Mix, Oregon Stat Univ.
- End of July – Early Sept.
- Swedish projects:
  - Land team focusing on Arctic ecology in warming climate
  - Physical Oceanography of the fjord



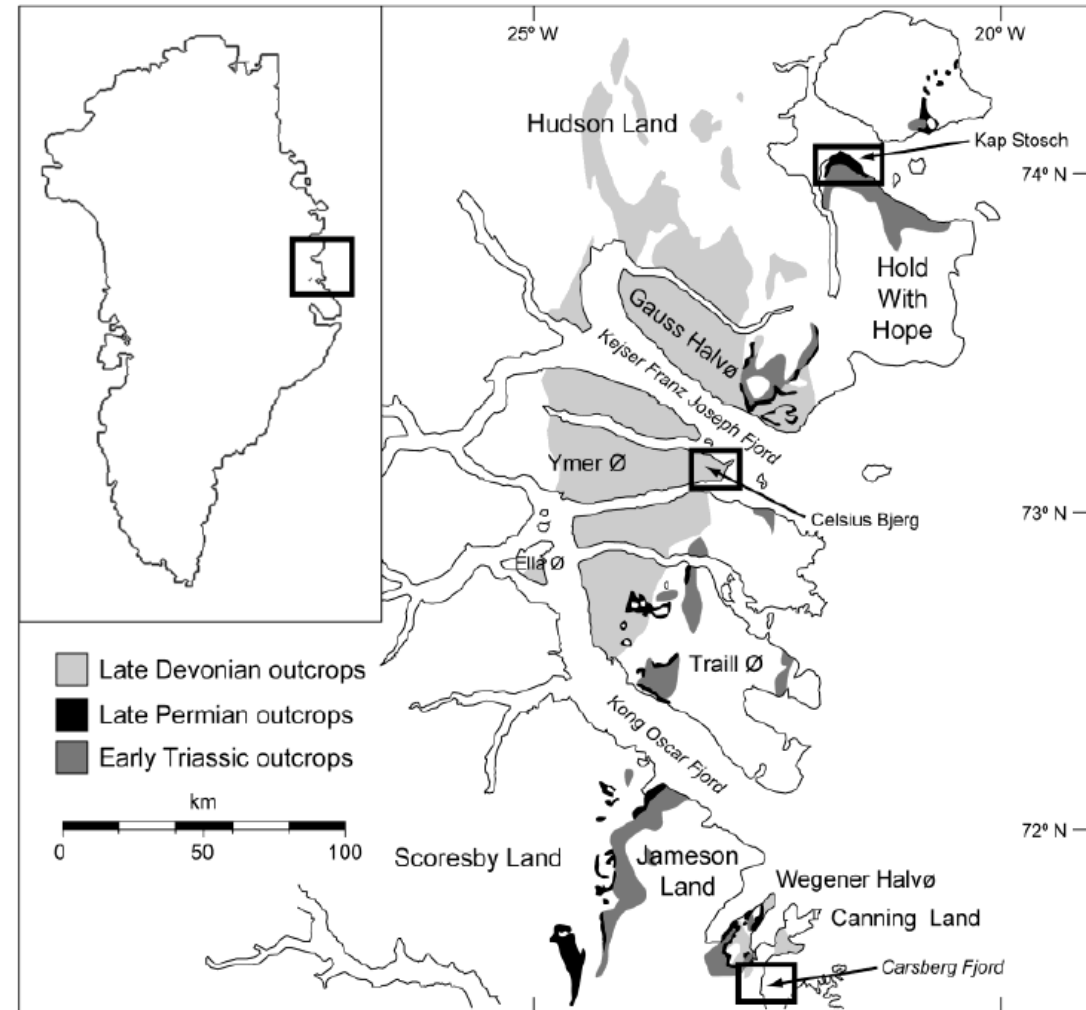
# Oden 2017(2018)

- Based on a Swedish accepted programme:  
"The life cycle of clouds in the high Arctic Summer"  
PI: Caroline Leck, Stockholm University
- With complementary and combinable projects



# Early tetrapod ecosystems on Greenland

- » PI. Benjamin Kear, Uppsala University
- » August 2015
- » From Constable Pynt







## Abisko Scientific Research Station

200 km N of Arctic Circle  
at tree line 68°N

- » ~ 4000 guest nights / year
- » Environmental monitoring (since 1913)
- » ICOS - Integrated Carbon Observation System
- » INTERACT – Pan-Arctic infrastructure network



**POLARFORSKNINGS  
SEKRETARIATET**  
SWEDISH POLAR RESEARCH SECRETARIAT



FARO  
2014-04-05

# ODEN 2015

## - STILL T.B.D.

**Project on sea ice management on project at the Norwegian University of Science and Technology, Trondheim**

- » A two icebreaker operation Oden and Frej
- » Fram strait
- » Sea ice Management
- » Trondheim