

Swedish Arctic Research Operations

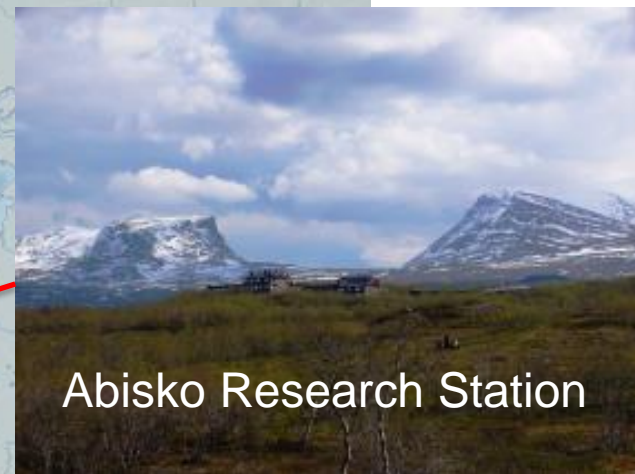
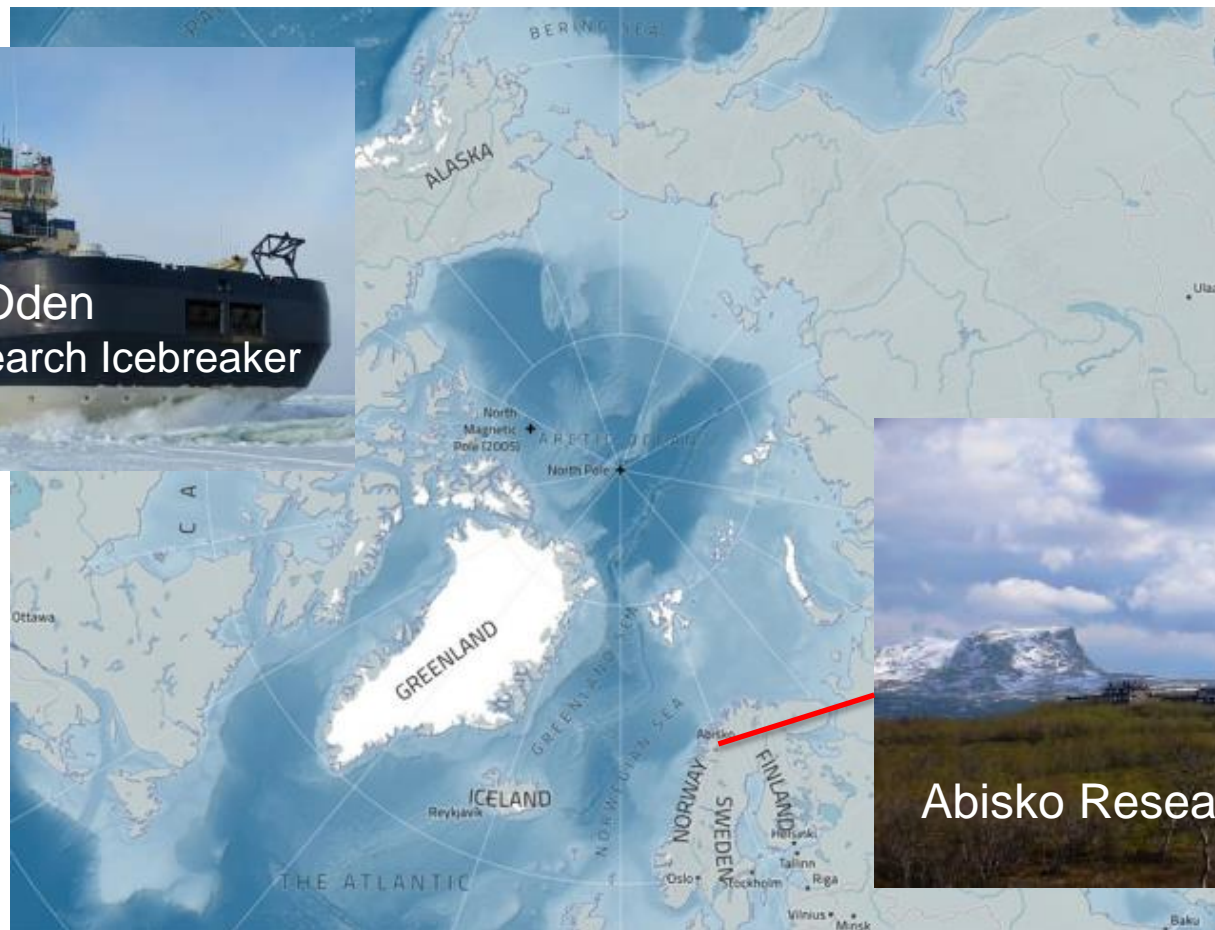
Swedish Polar Research Secretariat

Ulf Jonsell

Håkan Grudd

FARO 2016

Swedish Arctic Research Facilities



Oden 2015

Petermann Fjord
US/SWE collaboration

NSF funded project:

- » Petermann: Paleoceanography & Paleoclimatology

PI: Alan Mix, Oregon State Univ.

Swedish projects:

- » Physical oceanography
- » Atmospheric chemistry
- » Arctic ecology in a warming climate "*Arctic Islands*"



Oden 2016

Joint Canadian – Swedish Cruise

- » CCGS Louis S. St-Laurent & Oden
- » Aug–Sept 2016
- » Marine Geology
- » Bathymetry
- » Oceanography
- » Swedish Early Career Programme



Oden 2016

The Early Career Scientists programme will be running parallel to the Canadian activities on board. The programme will include training in polar marine field methods and optionally enhance the participants research project.

The call for applications will close 15 February. 15 pax.

Work Package

Heavy metals (air, water, snow & ice)

Geophysical mapping & Water column imaging

Boundary-layer meteorology/Surface energy budget

Physical oceanography (CTD)

Sediment coring and properties

Mentor

Katarina Gärdfeldt, Chalmers

Martin Jakobsson, Stockholm University

Michael Tjernström, Stockholm Univ.

Katarina Gärdfeldt, Chalmers

Martin Jakobsson, Stockholm University



Oden 2018

2nd US/SWE joint cruise

- » SWE: Call for applications
- » US: Dear Colleague letter
- » High Arctic
- » Oceanography



Oden 2017

» Open!



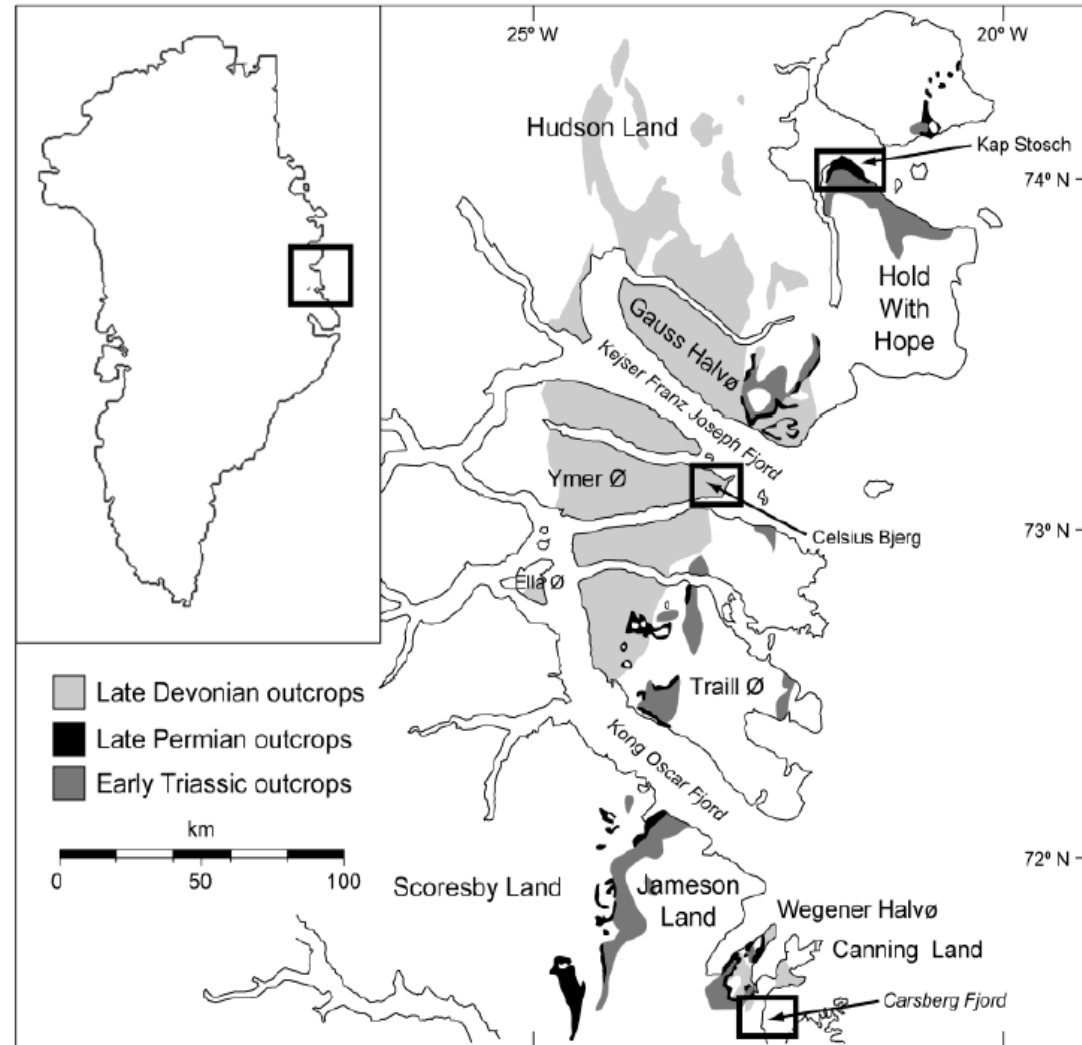
Plans for a replacement of Oden

- » Built 1989
- » Serve for research purposes ~2025
- » Swedish government will initiate an official report on a successor of Oden – a new research icebreaker.

First steps from and to the water

Exploring early aquatic tetrapod ecosystems in Greenland

- » PI. **Benjamin Kear**
Uppsala University
- » 2015 and 2016
- » From Constable Pynt
- » Main fieldsites:
 - *Kap Stosch*
 - *Celcius Bjerg*

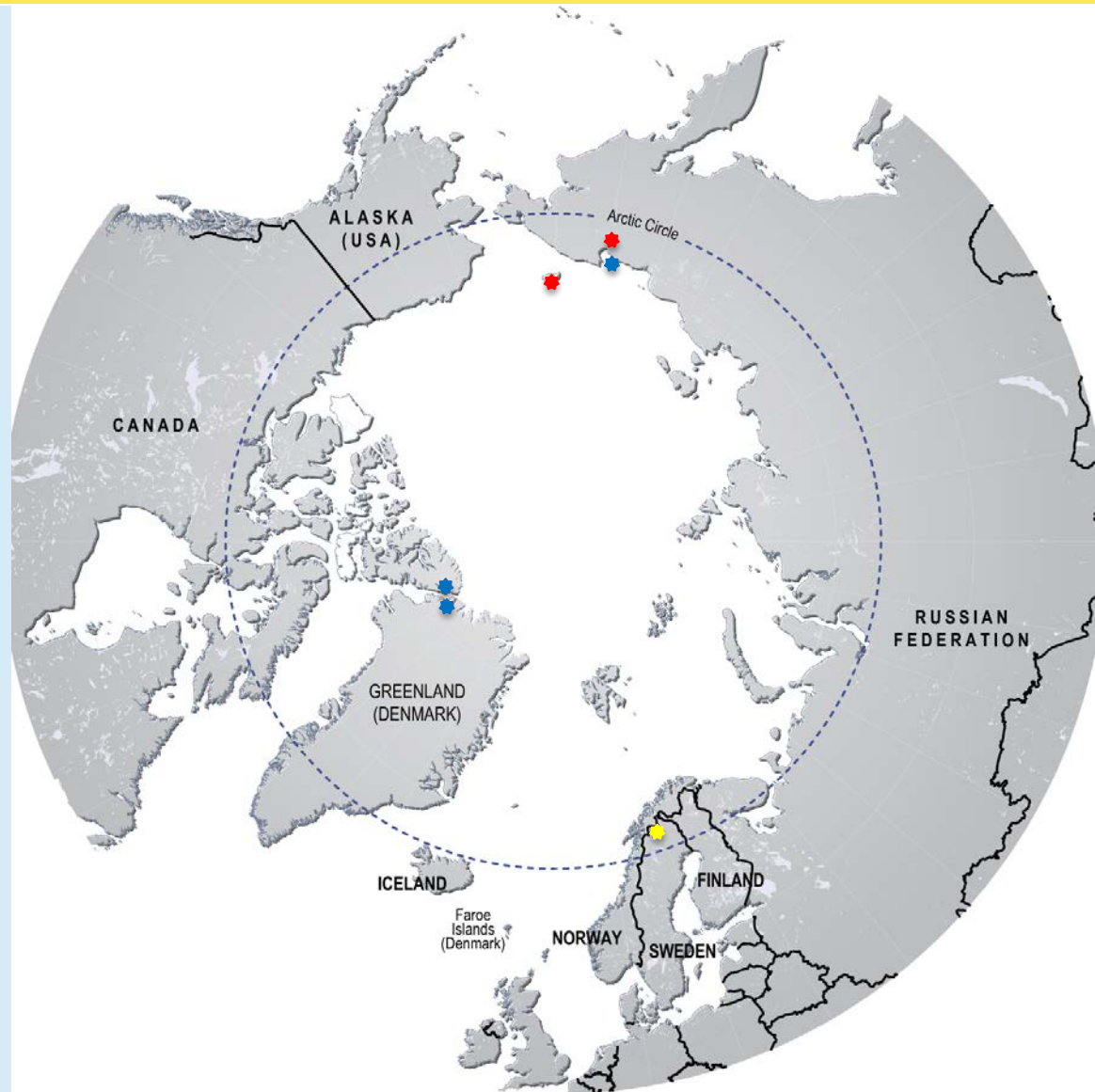


Arctic islands

Past, present, and future ecology

PI: **Anders Angerbjörn**
Stockholm University

- ❖ 2015: NE Greenland & Ellesmere Island, and Ayon Island.
- ❖ 2016: Abisko Research Station.
- ❖ 2017: Wrangel Island and Chaun River.





Abisko Scientific Research Station

200 km N of Arctic Circle
68°21'N, 18°49'E

- » 385 m a.s.l., close to tree line
- » Established in 1913
- » Long term data sets
- » Research on the effects of climatic and environmental changes on high-latitude ecosystems
- » ICOS - Integrated Carbon Observation System
- » INTERACT II – Pan-Arctic infrastructure network