

Swedish Arctic Research

Swedish Polar Research Secretariat SPRS

Magnus Tannerfeldt

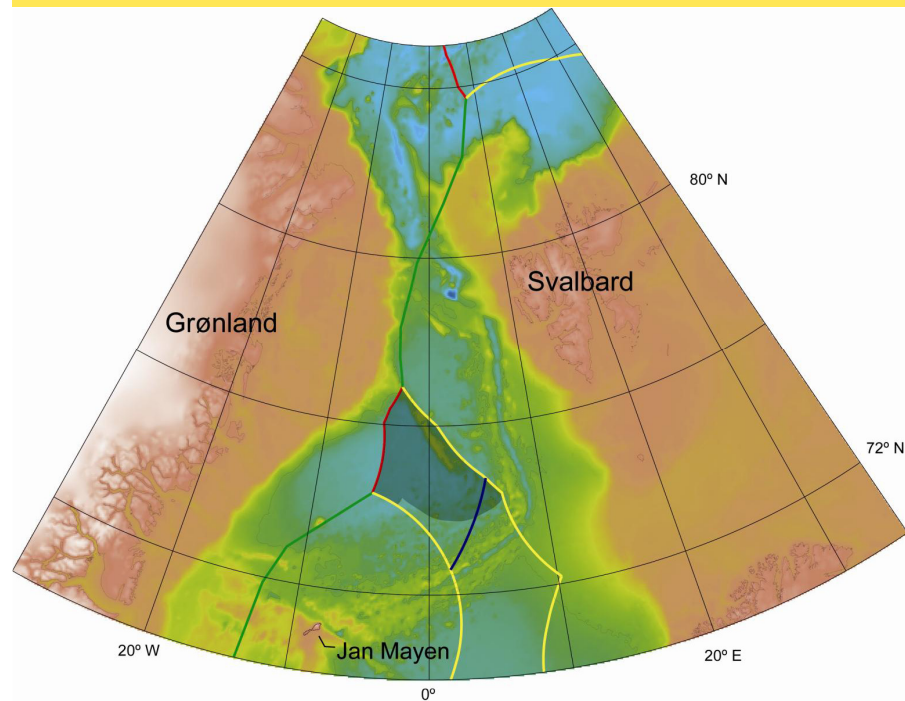
FARO Montreal 2012



**POLARFORSKNINGS
SEKRETARIATET**
SWEDISH POLAR RESEARCH SECRETARIAT



FARO
2012-04-21



ODEN 2011

EAGER

East Greenland Ridge

Bathymetry, gravimetry, seismics

ODEN 2012

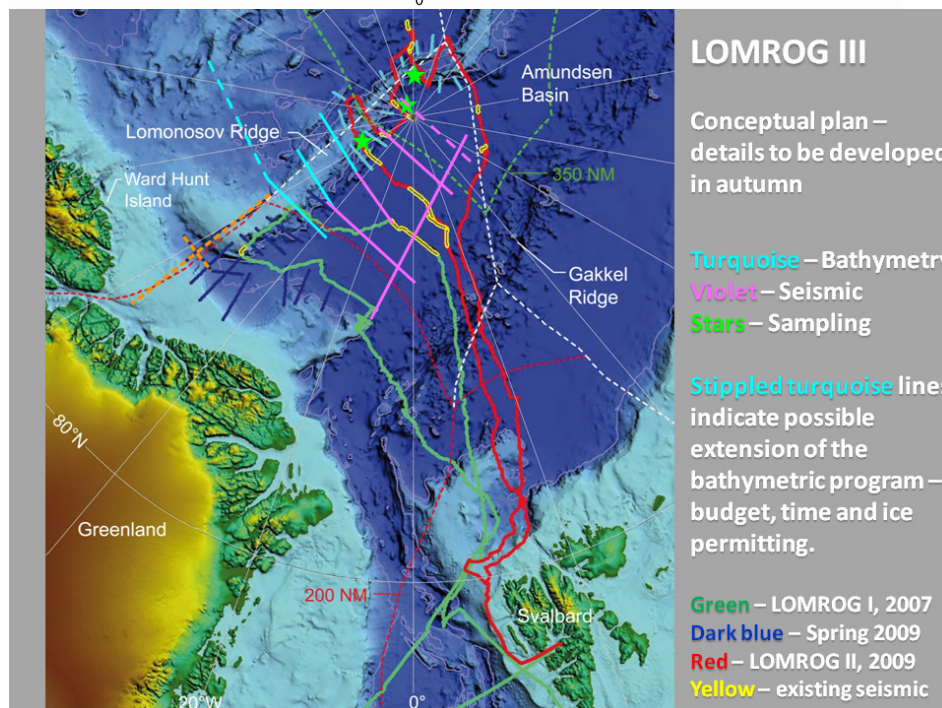
LOMROG III

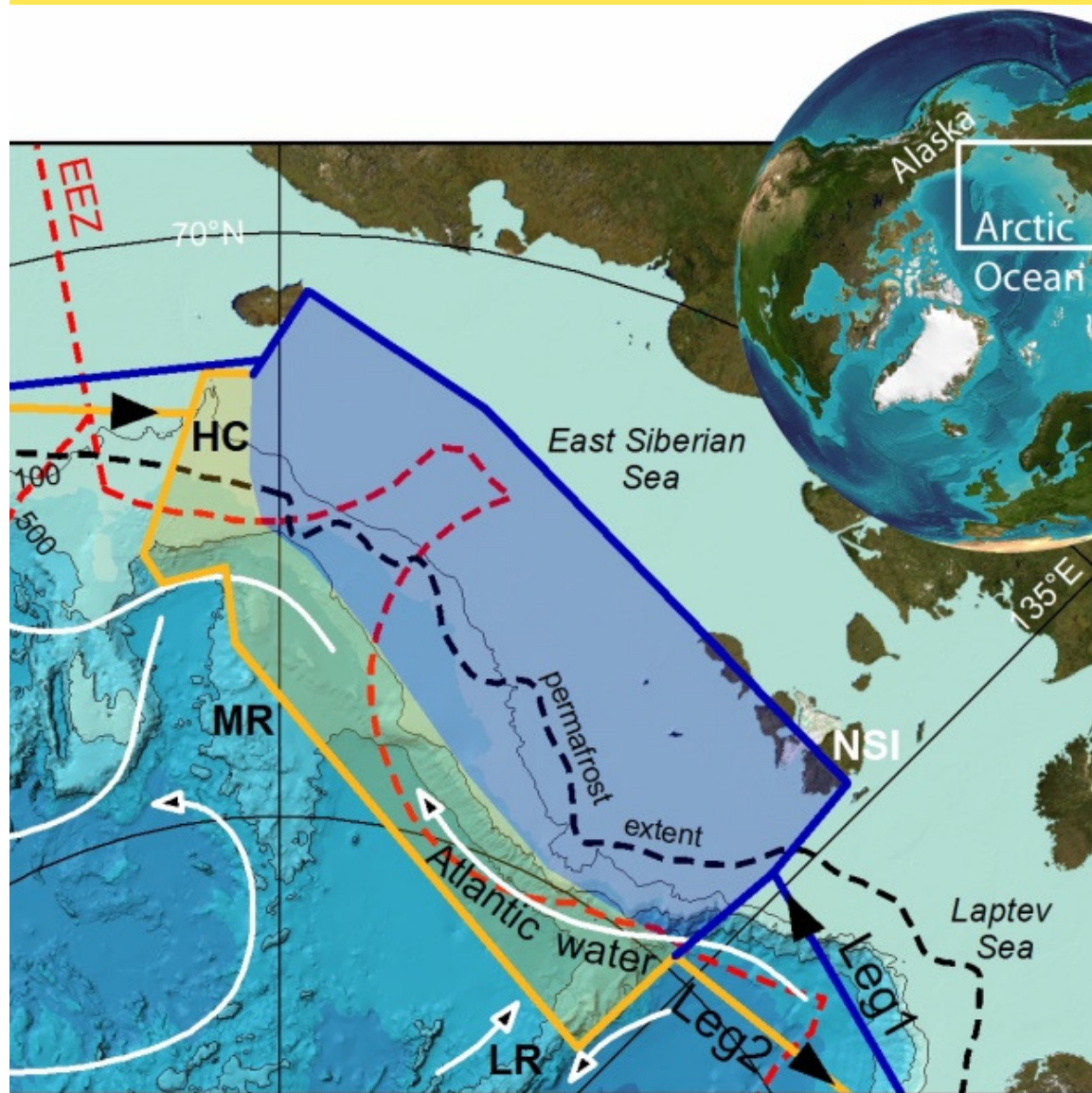
Lomonosov Ridge

Bathymetry, gravimetry, geology,

seismics, oceanography,

zooplankton, bacteria





SWERUS-C3 2014

- » Swedish – Russian – US Arctic Ocean investigation of Climate-Cryosphere-Carbon interactions
- » 2 legs of ~ 45 days each

SWERUS-C3 Tentative Science Themes



Theme

Methane biogeochemistry

Air-Sea exchange fluxes (energy, CH₄, CO₂)

Marine chemistry

Marine isotope chemistry

Sediment Microbial Biogeochemistry

Carbon Biogeochemistry

Sedimentology

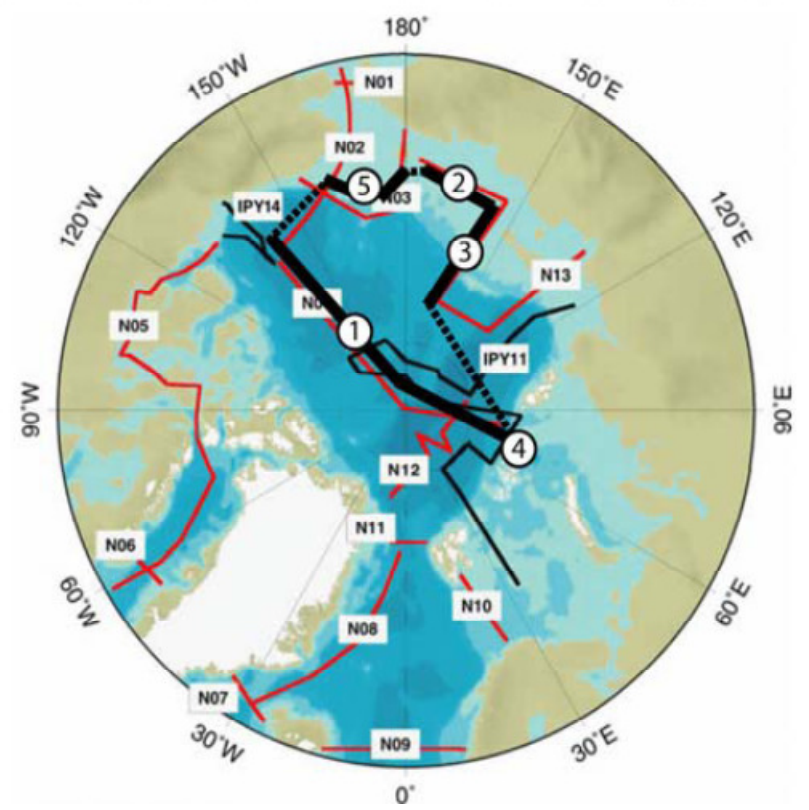
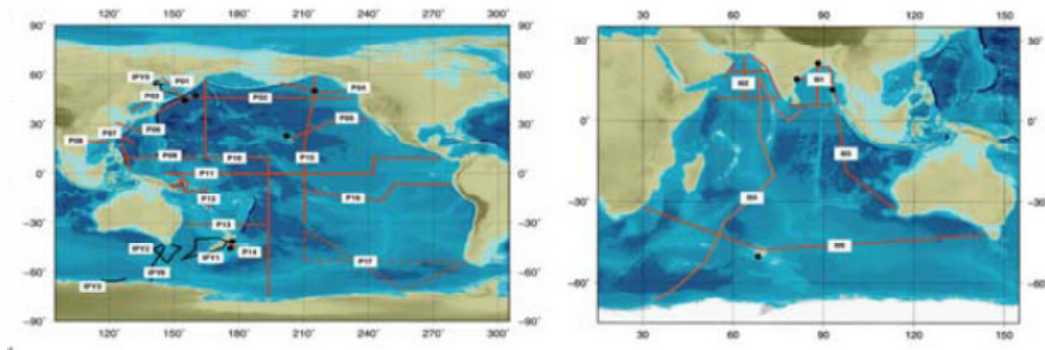
Geochronology and Micropaleontology

Geology and Geophysics

Physical oceanography

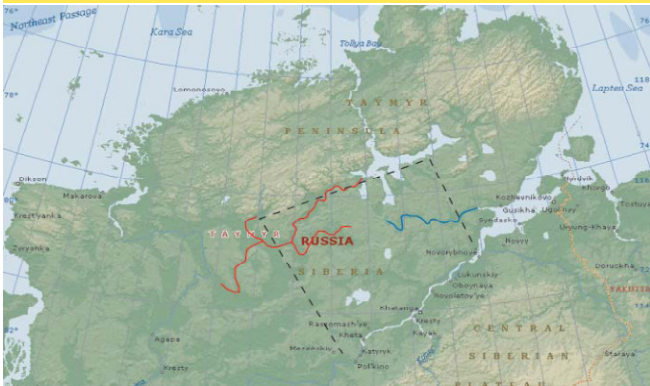
Boundary Layer Meteorology

Ocean and Ice Modeling



Arctic GEOTRACES 2015

» *International collaboration on trace metal biogeochemistry*



Terrestrial research projects

- » 2012 Central Taymyr *Geology*
- » 2012 Svalbard *Geology, Rephotography, Tourism research*
- » 2013 DeLong Islands *Geology*
- » 2013 Commander Islands *Zoonotic disease, antibiotics resistance*



Abisko Research Station

200 km N of Arctic Circle
at tree line 68°N

- » 43 research projects supported in 2011
- » Environmental monitoring (since 1913)
- » ICOS - Integrated Carbon Observation System
- » INTERACT – Pan-Arctic infrastructure network



www.polar.se



**POLARFORSKNINGS
SEKRETARIATET**
SWEDISH POLAR RESEARCH SECRETARIAT



FARO
2012-04-21