

ARICE – Arctic Research Icebreaker Consortium for Europe

A strategy for meeting the needs for marine research in the Arctic



20 partners from Europe, USA and Canada,
„Letters of support“ from IASC, ISAC and SAON

Initiated & coordinated by:



The current situation:

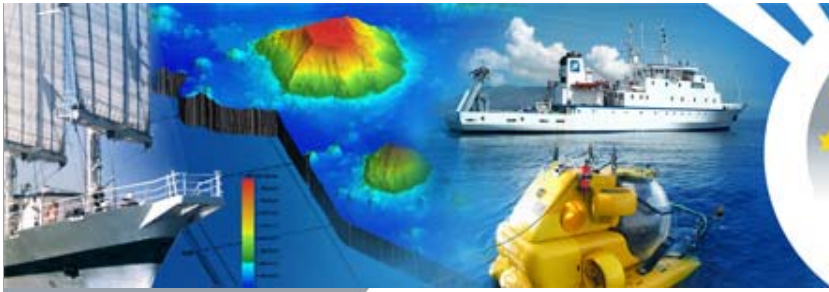
- The existing European icebreakers **are few** and some of them will go out of service in the next years,
- Most of the vessels **have to split their efforts** between the Arctic and the Southern Ocean,
- Arctic Research can only take place in the **short summer period** because most of the heavy icebreakers have to be at the Antarctic in the southern summer but current research interest (climate change) **implies year-round studies** in the Arctic
- Science operations especially in the central Arctic Ocean **are technologically and logistically highly demanding and cost-intensive** and therefore beyond the financial capabilities of most of the European Nations

The Vision of this icebreaker initiative:

- to develop a **European or International network** for joint research icebreaker operations in the Arctic Ocean and its ice-covered marginal seas with the available European vessels,
- to **increase the coordination** of available heavy icebreakers and ice-strengthened research vessels across Europe,
- to concentrate today's heterogenous national polar research strategies into a **coherent science planning** based on an open, transparent international consensus,
- to enter into agreements between Partners **to share and jointly fund** operational ship time on these vessels for a certain period of time per year,
- to achieve **long-term political and financial commitments** in the order of about 5 years.

Perspectives of ARICE in the EC:

- A topic proposal for future integrating infrastructure projects has been submitted to the EC in October 2012
- The proposal has been graded with an A and is now included in the EC Roadmap for Horizon 2020 as a [Topic with high potential and with merit for future Horizon 2020 actions for Integrating and opening existing national research infrastructures](#)
- The EU, Canada and USA are organizing a Symposium on [Collaboration in the Development and Use of Arctic and Marine Research Infrastructure](#) in Rome, 19 - 20 September and ARICE is one of the topics to be discussed there



Eurofleets



New operational steps
towards an alliance of
European research fleets

Polar components in EUROFLEETS2

Flagship initiative for Polar Access (WP3)
Polar & Subpolar Call for Ship-time (WP5)



Eurofleets



www.eurofleets.eu



General Information about the project

Project Start: 01. March 2013

Project Duration: 48 months

Amount of Funding: 9 Mio. € from the EC

31 partners from 20 European and associated nations

Coordination by Jacques Binot (IFREMER)

The EPB / ESF has in total 6 Person month in EUROFLEETS 2
WP3 and WP5



WP3- Objectives

EUROFLEETS 2 WP3: Flagship initiative for Polar Access

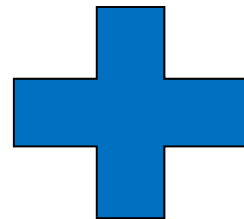
Main Objectives:

- i) determining the **available capacities** of Polar Research Vessels,
- ii) comparing that with the **scientific demand**, in accordance with IASC and SCAR for research in the Polar Oceans and
- iii) establishing **models for optimization** of this fleet by better coordination of the vessels' scheduling and by harmonizing the deployment of ice-strengthened research vessels with the heavy icebreakers – **strongly related to ARICE**.



WHAT OFFERS EUROFLEETS2?

- 73 fully funded days of ship time on 8 Global/Ocean class RVs
- 127 fully funded days of ship time on 14 Regional class RVs including the use of large equipment such as ROVs and submersibles.
- 104 fully funded days of marine equipment-time to carry out ship-based research activities within any field of marine science.



WHAT OFFERS EUROFLEETS2?

- Training for young scientists: how to write a successful ship-time proposal? – **Workshop Tallinn, 20-24th August 2013**
- On board training for technicians and students
- Floating university onboard the RV Dana (DK)





Information on upcoming calls - Call Schedule year 1

- **Polar & Subpolar Call (Regional 1)**
 - Call opens: end of March 2013
 - Call deadline: Friday 24th of May 2013
- **Super-Integration Call**
 - Expression of Interest: from end of March until Wed. 15th of May
 - Call opens: Friday 14th of June 2013
 - Call deadline: Monday 16th of September 2013
- **Embarked Equipment Call**
 - Call opens: Friday 14th of June 2013
 - Call deadline: Monday 16th of September 2013



Polar & Subpolar Call 2013 (Regional 1)

Vessels offered:

Polarstern (AWI, Germany)

Marion Dufresne (IPEV, France)

G.O Sars (IMR, Norway)

Magnus Heinason (Havstovan, Faroe Islands)

Sanna (GINR, Greenland)

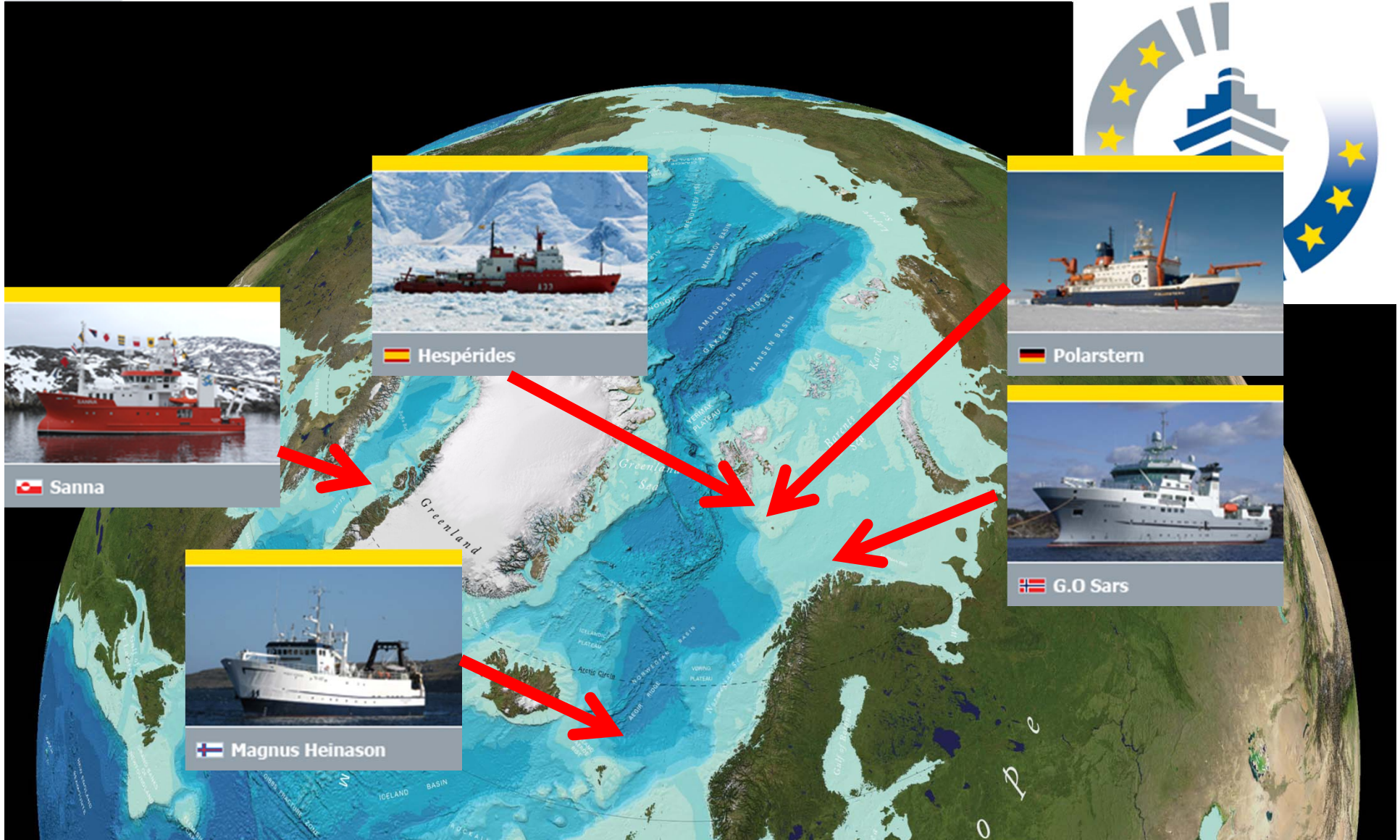
Hespérides (CSIC, Spain)

•Call already OPEN!!!

•Call deadline: Friday 24th of May 2013



Polar & Subpolar Call 2013 (Regional 1)




 Sanna



 Hespérides



 Polarstern

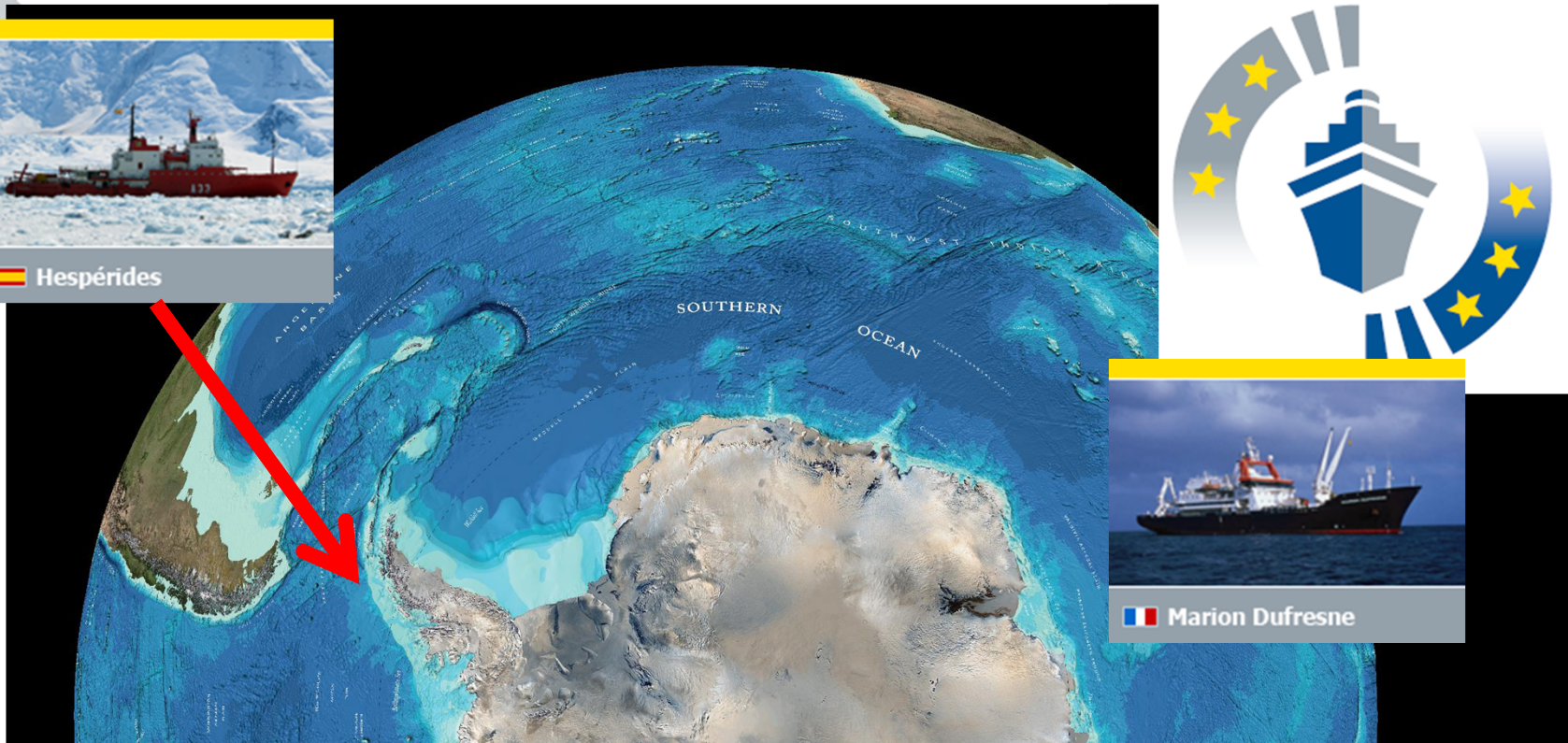


 G.O Sars



 Magnus Heinason

Polar & Subpolar Call 2013 (Regional 1)



...fully funded ship-time on a range of European research vessels and marine equipment will be made available between 2014 and 2017 to support outstanding research projects.

Applications are now being invited for funding for ship-time on Polar and Subpolar regions with any of the following research vessels to carry out ship-based research activities within any field of marine science.

The deadline for applicants to submit proposals is **Friday 24th of May 23:59 hours** Central European Time (CET).



TransNational Funded Ship Time and Embarked Marine Scientific Equipment

EUROFLEETS2 is a EU funded project providing scientists with 200 fully funded days of ship-time and 104 fully funded days of marine equipment to carry out ship-based research activities within any field of marine sciences.

Eligibility and selection criteria @

www.eurofleets.eu

CALL FOR PROPOSALS

Polar and Subpolar Call 2013: Ship time is offered within 6 participating RVs, including 2 icebreakers, for the Polar and Subpolar regions. Deadline of application: **24th of May 2013.** [Full proposal submission.](#)

For more information on upcoming calls visit

www.eurofleets.eu

**For more information,
please visit the
EUROFLEETS webpage:**

www.eurofleets.eu

or contact the:

EUROFLEETS2 EVALUATION OFFICE

Verónica Willmott-Puig

ALFRED WEGENER INSTITUT HELMHOLTZ CENTRE FOR

POLAR AND MARINE RESEARCH

BREMERHAVEN, GERMANY

eurofleets2@awi.de
