

NSF update to FARO

Renee D. Crain
Arctic Research Support & Logistics

Simon Stephenson
Head, Arctic Sciences Section



U.S. National Science Foundation
Geosciences Directorate (GEO)
Division of Polar Programs (PLR)



Activities Relevant to FARO

- International Collaborations
- Ships
- Field Stations
- Data Sharing
- Program Management



International Collaborations

U.S. Participation in INTERACT

Toolik Field Station, Alaska

Applications April 1-30

Belmont Forum

International funding
opportunity

Arctic Observing

Arctic GEOTRACES

Lead proposal going
forward

Suite of additional proposals under
review

Ship time in 2015 on Healy



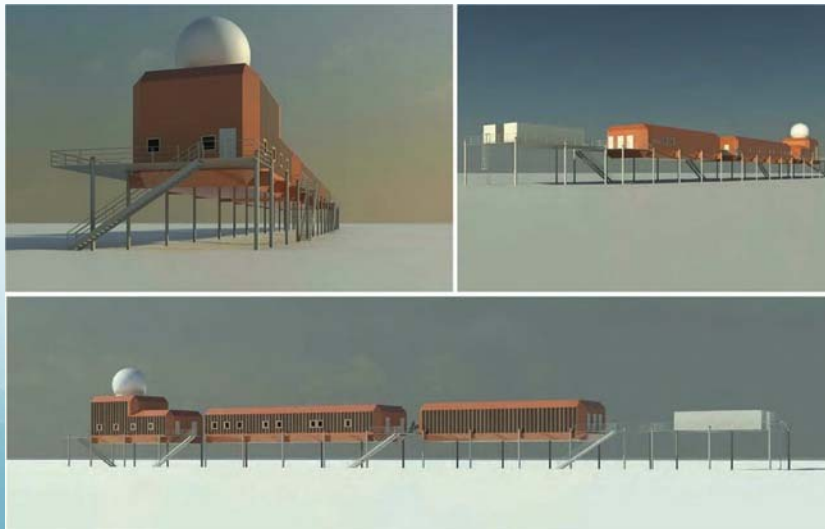
Shipping News

- R/V Sikuliaq ready for science in 2015
 - Based in Seward, Alaska
 - Owned by NSF, operated by the University of Alaska
 - Light icebreaker fully equipped for research
- USCGC Healy
 - Upgraded science facilities
 - Current cruise extensive Canadian collaboration



Summit Observatory & Isi Station

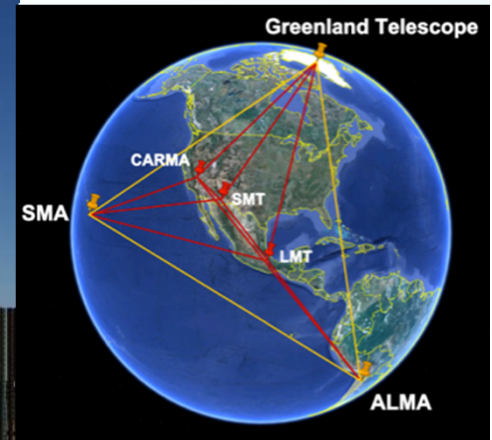
- Summit Station becomes Summit Observatory with clean air/clean snow science and Atmospheric Watch Observatory
- Isi Station located approx 3 miles downwind with capacity for campaign science, support for Greenland Telescope, other astrophysics



Isi elevated station concept

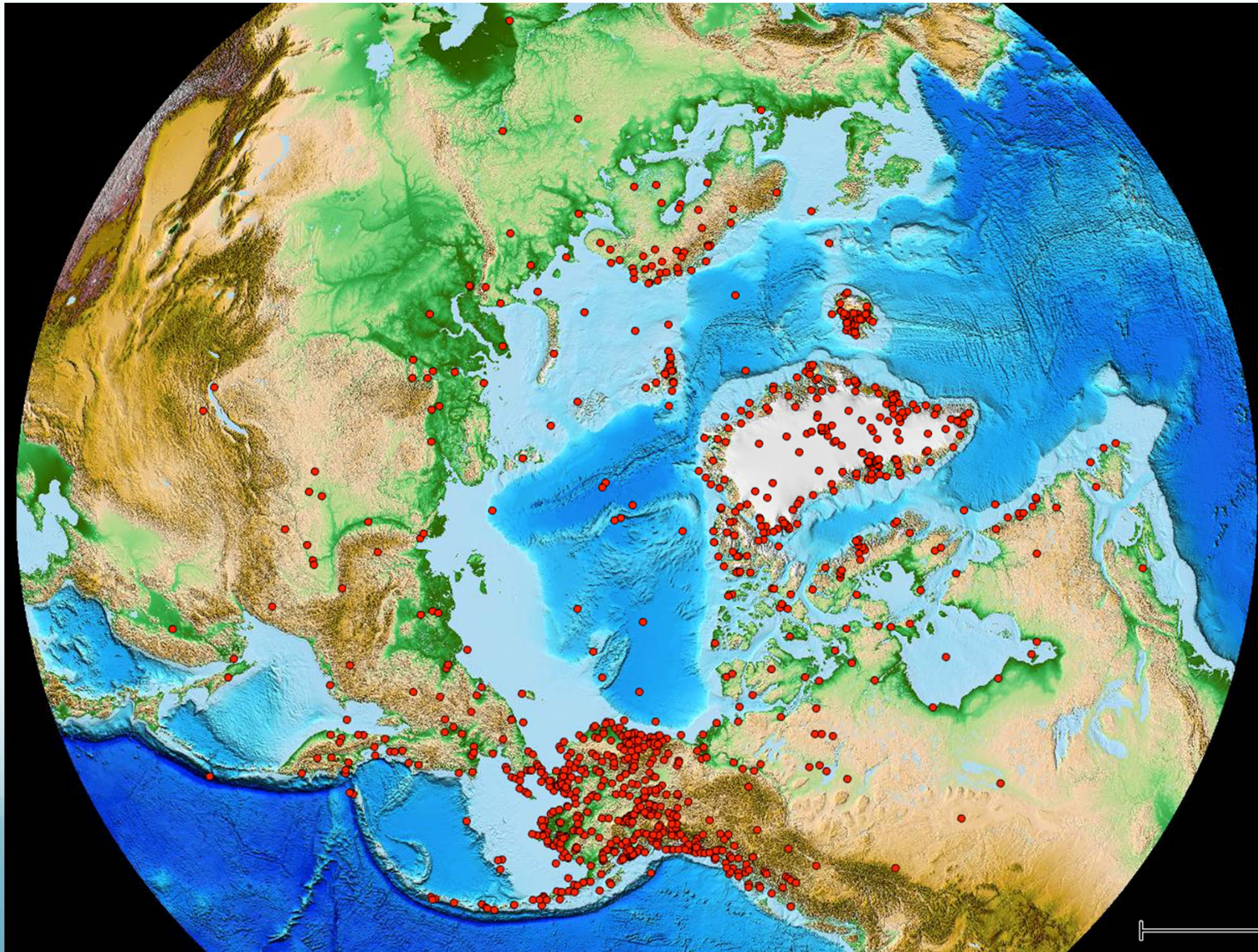


VLBI Telescope



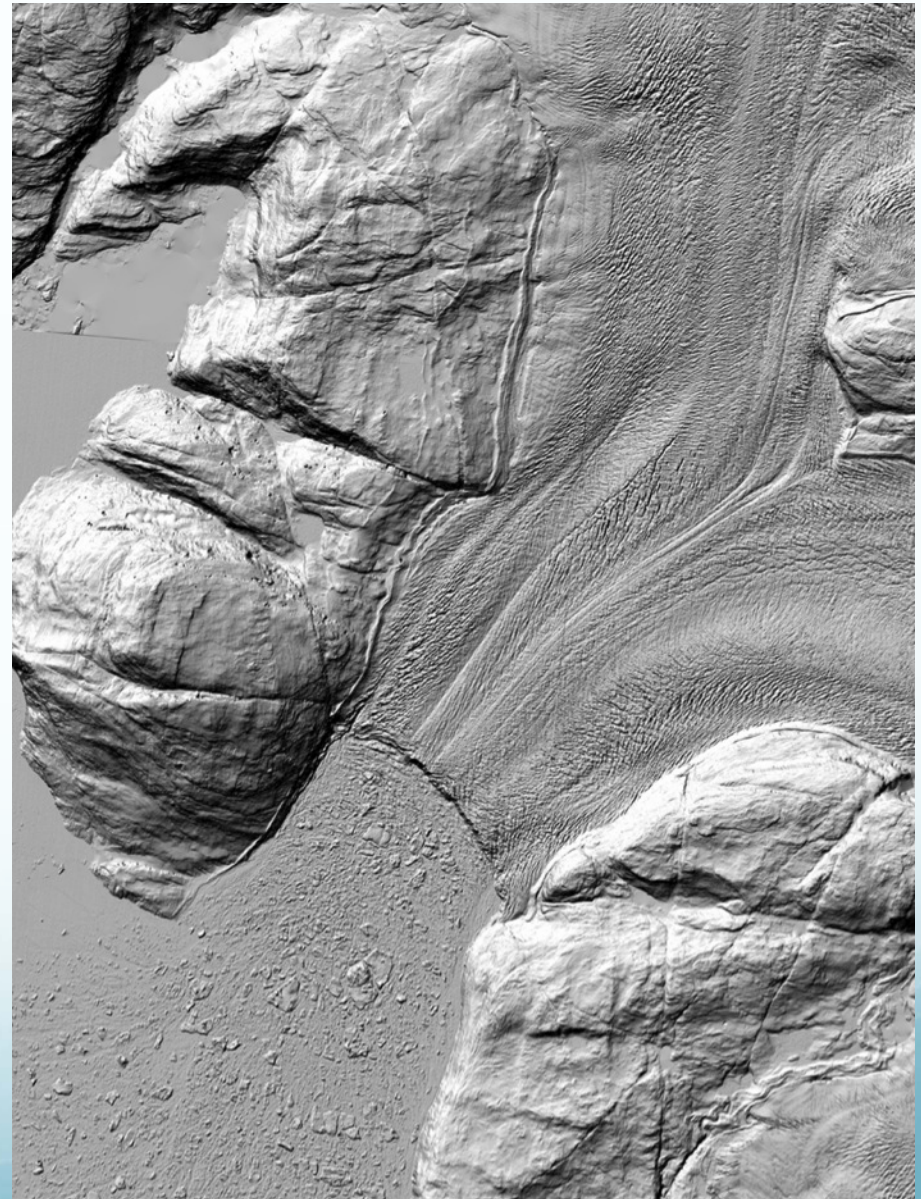
Field Sites in 2013

armap.org



Polar Geospatial Center DEMs

- NSF/PGC has access to commercial stereo imagery and imagery tasking funded by U.S. government for joint purposes
- All of Greenland and most of the Arctic is being collected at least yearly
- Output DEMs have the quality of coarse LiDAR
- Produced with public domain software
- DEMs can be shared where there is joint U.S. interest
- In Greenland, ASIAQ and the Language Secretariat will use PGC imagery to expand Greenlandic placenames, coastlines and features
- PGC facilitated Google working with ASIAQ to collect data for Google Maps, Earth and Street View



Program Management

Workshop on Arctic Research Support & Logistics program

- October 2013 at NSF
- Research community, facility operators and others discuss priorities and goals for the program
- Report due summer 2014
- Follows 1998 and 2005 reports that are foundational to the program
- <http://www.arcus.org/logistics/2013-workshop>



Workshop on Arctic Field Safety Risk Management

- February 4-5 at NSF
- Research community, facility operators, experts in risk management and others
- Report due summer 2014
- <http://rslriskworkshop.com>
- Outcomes
 - Better sharing of near-miss information
 - Researcher more engaged with their university risk offices
 - Improved training and education of new researchers
 - Improved resources made available to the research community by RSL program
 - Ongoing Community of Practice to stay engaged and develop resources



Thank you!

