



COMNAP



29 National Antarctic Programs together supporting science in Antarctica and the Antarctic Treaty System.

The Council of Managers
of National Antarctic Programs

Report of The Council of Managers of National Antarctic Programs

Professor Kazuyuki Shiraishi

COMNAP Chairman

www.comnap.aq



COMNAP



29 National Antarctic Programs together supporting science in Antarctica and the Antarctic Treaty System.

The Council of Managers
of National Antarctic Programs



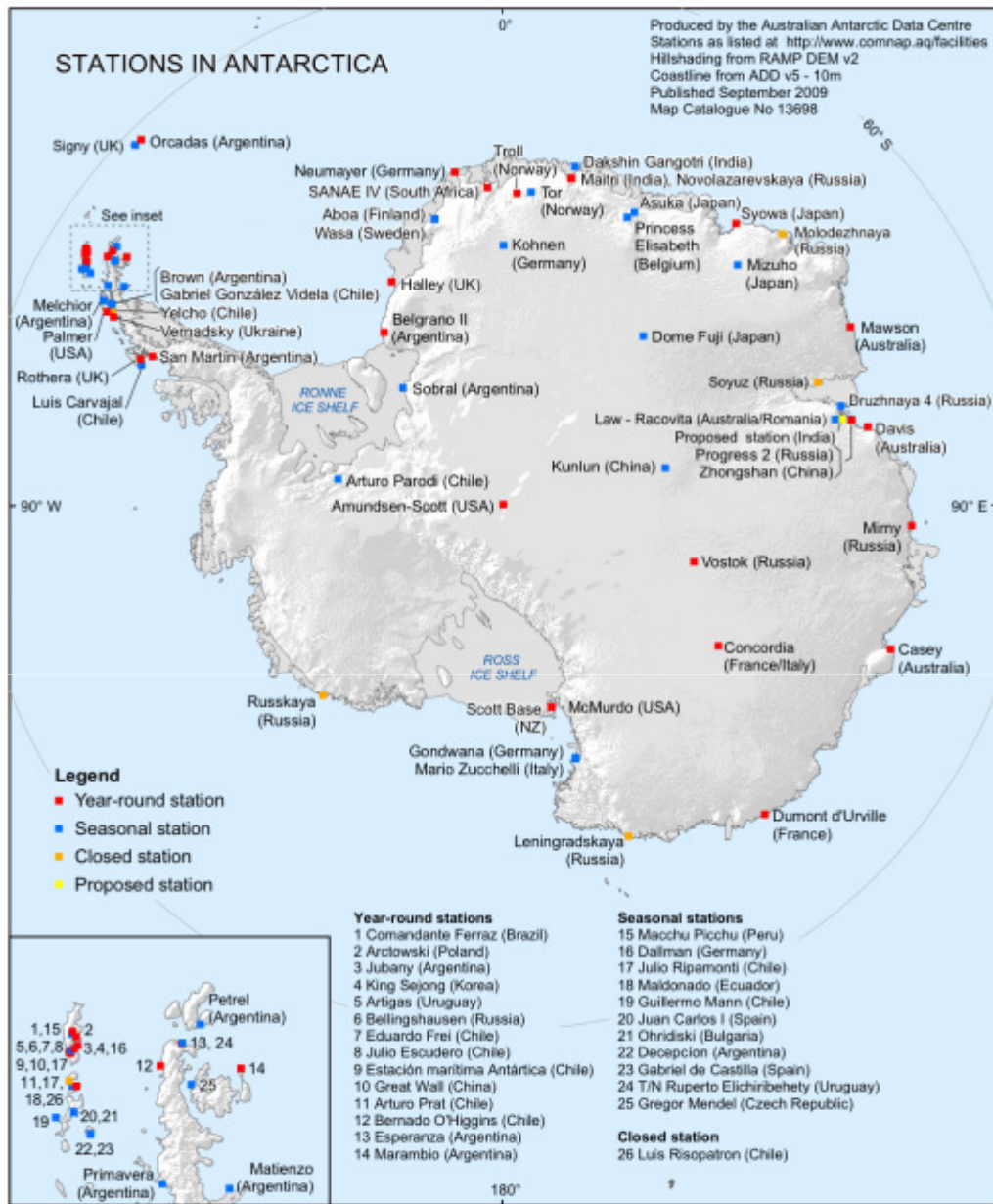
What's COMNAP's Objective/Purpose?

To develop and promote best practice in managing the support of scientific research in Antarctica.

We achieve this by:

1. Serving as a forum to develop practices that improve effectiveness of activities in an environmentally responsible manner;
2. Facilitating and promoting international partnerships;
3. Providing opportunities and systems for information exchange;
4. Providing the Antarctic Treaty System with objective and practical, technical and non-political advice drawn from the National Antarctic Programs' pool of expertise.





National Antarctic Programs

Argentina	Dirección Nacional del Antártico (DNA)
Australia	Australian Antarctic Division (AAD)
Belgium	Belgium Science Policy Office
Brazil	Programa Antártico Brasileiro (Proantar)
Bulgaria	Bulgarian Antarctic Institute
Chile	Instituto Antártico Chileno (INACH)
China	Polar Research Institute of China (PRIC)
Czech Republic	Masaryk University
Ecuador	Instituto Antártico Ecuatoriano (INEA)
Finland	FINNARP at the Finnish Meteorological Institute
France	IPEV French Polar Institute
Germany	Alfred Wegener Institute for Polar and Marine Research (AWI)
India	National Centre for Antarctic & Ocean Research (NCAOR)
Italy	Programa Nazionale di Ricerche in Antartide (PNRA)
Japan	National Institute of Polar research (NIPR)
Netherlands	The Netherlands Organisation for Scientific Research (NWO)
New Zealand	Antarctica New Zealand
Norway	Norwegian Polar Institute
Perú	Instituto Antártico Peruano (INANPE)
Poland	Polish Academy of Sciences
Russian Federation	Arctic and Antarctic Research Institute/Russian Antarctic Expedition (AARI/RAE)
Korea	Korea Polar Research Institute (KOPRI)
South Africa	South African National Antarctic Programme (SANAP)
Spain	Spanish Polar Committee
Sweden	Polar Research Secretariat
Uruguay	Instituto Antártico Uruguayo
Ukraine	National Antarctic Scientific Centre of Ukraine
U. Kingdom	British Antarctic Survey
U. States	National Science Foundation Office of Polar Programs



COMNAP



29 National Antarctic Programs together supporting science in Antarctica and the Antarctic Treaty System.

The Council of Managers
of National Antarctic Programs

A few items of interest

- August 2014: COMNAP Symposium, theme was *Success through International Co-operation*. The Symposium Proceedings published in February 2015 and are available free of charge by email: sec@comnap.aq
- May 12–13 2015: COMNAP Sea Ice Challenges Workshop. This open workshop will be held in Hobart, Australia. Opportunity for scientists and national Antarctic program operators to discuss the challenging nature of sea ice in parts of the Antarctic region. Information from: <https://www.comnap.aq/SitePages/SeaIceWorkshop.aspx>



COMNAP



29 National Antarctic Programs together supporting science in Antarctica and the Antarctic Treaty System.

The Council of Managers
of National Antarctic Programs



COMNAP



29 National Antarctic Programs together supporting science in Antarctica and the Antarctic Treaty System.

The Council of Managers
of National Antarctic Programs

A few items of interest

- **Deadline 3 June 2015: COMNAP Antarctic Research Fellowships.** Funding available for early career persons from a COMNAP member country to undertake travel to another COMNAP member country or to Antarctica to complete a project or research.
- **Antarctic “Roadmap” Challenges Project:** The community is asked to participate in this project by way of two on-line surveys or by submitting a white paper on a key topic or technology. The project considers requirements that will be necessary to deliver future Antarctic research. See: <https://www.comnap.aq/Projects/SitePages/ARC.aspx>



COMNAP



29 National Antarctic Programs together supporting science in Antarctica and the Antarctic Treaty System.

The Council of Managers
of National Antarctic Programs

ART Albrecht Dürer's 16th century depiction of melancholy [p.26](#)



MENTAL HEALTH Back evidence-based therapies for treating depression [p.27](#)

EDUCATION University admissions policies should champion diversity [p.28](#)

RESEARCH ETHICS Developing rules for assessing pain in lab animals [p.29](#)



The aurora australis over the German Antarctic research base, Neumayer-Station III.

Six priorities for Antarctic science

Mahlon C. Kennicutt II, Steven L. Chown and colleagues outline the most pressing questions in southern polar research, and call for greater collaboration and environmental protection in the region.

Future?

Future Antarctic science will continue to address multi-disciplinary issues, will be complex and will require international collaborative efforts...

COMNAP's ARC Project will assist national Antarctic programs with this.



COMNAP



29 National Antarctic Programs together supporting science in Antarctica and the Antarctic Treaty System.

The Council of Managers
of National Antarctic Programs

AFIM



ANTARCTIC
FLIGHT INFORMATION
MANUAL

Apr Elev 37'

JEPPESON 24 OCT 08 ROTHERA-5 ROTHERA, ANTARCTICA ROTHERA STATION RUNWAY

AFIM ROTHERA HANGAR
5000 7775 118.1 118.1

ADDITIONAL RUNWAY INFORMATION

RWY	REIL MTRL	LDA	TORA	USABLE LENGTHS		TAKE-OFF	WIDTH
				Threshold	Glide Slope		
18	REIL MTRL	LDA 2875	TORA 2875				
36	REIL MTRL PAPI-R	LDA 2875	TORA 2875				

CAUTION: Many birds around point. Balloons, rockets and UAVs operated at Rothera - call for info.
Remarks: Icebergs in vicinity of runway up to 300'. Inbound aircraft to call 5 miles out. Departing aircraft to call Airborne on passing 600'. Steeply rising ground to West of runway. Portable runway lights available on request.
Fuel: Available, (PPR).
Coordinates:
RAMP:
 587 34.0 W068 07.7
THRESHOLD RWY 36
 587 34.57 W068 07.85
THRESHOLD RWY 18
 587 33.83 W068 07.40

CHANGED: Threshold runway 18 coordinates. © JEPPESON, 2011, 2008. ALL RIGHTS RESERVED.

ANTARCTIC TELECOMMUNICATIONS OPERATORS MANUAL



ATOM



COMNAP



29 National Antarctic Programs together supporting science in Antarctica and the Antarctic Treaty System.

The Council of Managers
of National Antarctic Programs

Checklists

for supply chain managers of National Antarctic Programmes for the reduction in risk of transfer of non-native species



for ships travelling to Antarctica

Action	Importance	✓
Rat guards in place on mooring lines	★★★	
Gang plank closed at night or lowered, lit with flood lights	★★★	
External doors and windows closed wherever possible	★★★	
Insect traps in place in food storage areas	★★★	
Top food removed from food storage areas at the end of each voyage	★★	
Hold fumigated	★	
Inside watercraft cleaned	★★	
Hulls of watercraft cleaned before loading	★	

for aircraft travelling to Antarctica

Action	Importance	✓
Inside aircraft clean	★★★	
Landing wheels or skids clean	★★★	
Doors closed whenever possible	★★★	
Lighting minimised during night-time loading	★★★	
Insecticide available in case insects etc. are discovered in flight	★★	

for stores supplying cargo to Antarctic destinations

Action	Importance	✓
Area surrounding stores free from woody plants	★★★	
Shipping containers washed inside and out	★★★	
Loose and palletised cargo minimised	★★★	
Wooden crates and pallets meet International Plant Protection Convention standards	★★★	
Tracks and wheels of all vehicles clean	★★★	
Warehouse doors closed where possible	★★	
Cargo stored inside where possible	★★	

for stores supplying food to Antarctic destinations

Action	Importance	✓
Designated clean area for packing food	★★	
Packing area is rodent free, packaging is rodent proof	★★★	
Flying and crawling insect traps in place	★★★	
Produce is free of soil	★★★	
Quality checks on food to ensure no insect or fungal infestation before loading	★★★	
Refrigerate fresh produce	★★	
Avoid sourcing out of season produce	★	

for expeditioners' gear sent to Antarctic destinations

Action	Importance	✓
Supply new clothing where possible	★★★	
Supply clothing and footwear not previously used in polar or alpine climates	★★	
Ensure all clothing and footwear is washed to remove organic material	★★	
Visually check all bags, footwear and clothing (particularly socks and over trousers) and remove entrained seeds	★★	
Pay particular attention to items with Velcro®	★	

An information video outlining cleaning procedures can be found at: http://academic.sun.ac.za/04/video/Water_cleaning_video%202010.mv

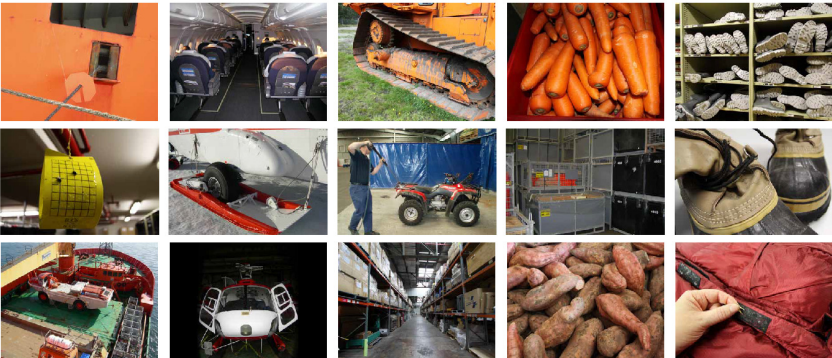


COUNCIL OF MANAGERS OF NATIONAL ANTARCTIC PROGRAMS

Workshop: 'Advancing Antarctic Station Waste Water Management' Christchurch, New Zealand, 28 August 2014

CONVENORS' REPORT

Background
 Non-native species are one of several major threats to biodiversity globally. They have already profoundly impacted the biodiversity of many sub-Antarctic islands, and are increasing in their prevalence in the Antarctic. Indeed, the threat of non-native species introduction has been identified as a priority Antarctic conservation concern by the Committee for Environmental Protection (CEP) within the Antarctic Treaty System. The Scientific Committee on Antarctic Research (SCAR) and the Council of Managers of National Antarctic Programs (COMNAP) are working with the CEP to reduce the threats posed by non-native introductions to the Antarctic region.
 Scientific experience has shown that prevention of the introduction of non-native species is the most appropriate means of reducing the risks posed by them. If the species are not introduced they cannot go on to colonise an area and have no impact. Recent work, including that of the Science in Antarctica project undertaken during the International Polar Year, has identified the key pathways and vectors of non-native species introduction into the region.
 Based on this research, and operator experience and consideration of what remediation actions can be taken by operators to reduce the risk of transfer of non-native species to the Antarctic, the checklist set out here have been developed. This document suggests actions that for many operators, can readily be taken, outside of the office are recommended, and provide guidance on the relative importance of each action in terms of probability and direction of non-native species transfer. The importance ranking, from one star being the lowest to three stars being the highest, is a general guide. Given the range of environments that exist in the Antarctic region, the high importance of an action may not necessarily apply to all areas of the Antarctic.
 It does not address however, the specific reduction of risk of introduction of micro-organisms, nor the reduction in risk of transfer of disease. As further information becomes available and the practicability of procedures to reduce the risk of introduction of non-native species improves, so these checklists will evolve.



Plus, two related training modules:
 Module 1: Protocol on Environmental Protection (English, Spanish, French & Russian)
 Module 2: Preventing transfer of non-native species (currently English only)

Project	Project Manager	EXCOM officer (oversight)
Antarctic Flight Information Manual (AFIM) – Electronic format implementation	Paul Morin & Brian Stone	John Hall
Antarctic Roadmap Challenges (ARC)	Michelle Rogan-Finnemore	Kazuyuki Shiraishi
Antarctic Peninsula Advanced Science Information (APASI)		José Retamales
Fuel Tank Automated Warning System	Oleksandr Kuzko	Yves Frenot
Sea Ice Challenges Workshop	Rob Wooding	Rob Wooding & Yves Frenot
SPRS Review	Robb Clifton	Hyoung Chul Shin
Station Infrastructure Catalogue		Yves Frenot
Suppliers Database	Graeme Ayres	John Hall
Telemedicine Workshop (27 August 2015)	Jeff Ayton	John Hall



Expert Group (topic)	Expert Group leader	EXCOM officer (oversight)
Air	Giuseppe Di Rossi & Brian Stone	John Hall
Energy & Technology	Felix Bartsch & Pavel Kapler	Rob Wooding
Environment	Anoop Tiwari	Hyoung Chul Shin
Medical	Jeff Ayton	John Hall
Outreach	Eva Gronlund	Yves Frenot
Safety	Henrik Törnberg	Kazuyuki Shiraishi
Science	Javier Arata	José Retamales
Shipping	Miguel Ojeda	José Retamales
Training	Veronica Vlasich	Yves Frenot

COMNAP Executive Committee (EXCOM)

The COMNAP Chair and Vice-Chairs are elected officers of COMNAP. The elected officers plus the Executive Secretary, compose the COMNAP Executive Committee as follows:



Position	Officer	Term expires
Chair	Kazuyuki Shiraishi (NIPR) kshiraishi@nipr.ac.jp	AGM 2017
Vice-Chairs	Hyoung Chul Shin (KOPRI) hcschin@kopri.re.kr	AGM 2016
	John Hall (BAS) jhal@bas.ac.uk	AGM 2016
	José Retamales (INACH) jretamales@inach.cl	AGM 2017
	Rob Wooding (AAD) rob.wooding@aad.gov.au	AGM 2017
	Yves Frenot (IPEV) yves.frenot@ipev.fr	AGM 2017
	Executive Secretary	Michelle Rogan-Finnemore michelle.finnemore@comnap.aq



The National Antarctic Programs from
29 nations party to the Antarctic Treaty



together in
COMNAP

supporting
science in Antarctica
and the
Antarctic Treaty System

The Council of Managers of National Antarctic Programs
www.comnap.aq



COMNAP

Thank you for your attention.

info@comnap.aq