



# Canada's Report

Presented By:

Jim Drummond

April 2015

# Highlights

- Canadian Network of Northern Research Operators (CNNRO)
- Polar Continental Shelf Program (PCSP)
- Canadian High Arctic Research Station (CHARS)
- Discovery of HMS Erebus from the Franklin expedition

# CNNRO

- Canadian Network of Northern Research Operators (CNNRO)
- 39 Members
  - 29 regular members
  - 10 associate members
- 79 facilities across the Canadian Arctic
- <http://www.cnnro.ca>

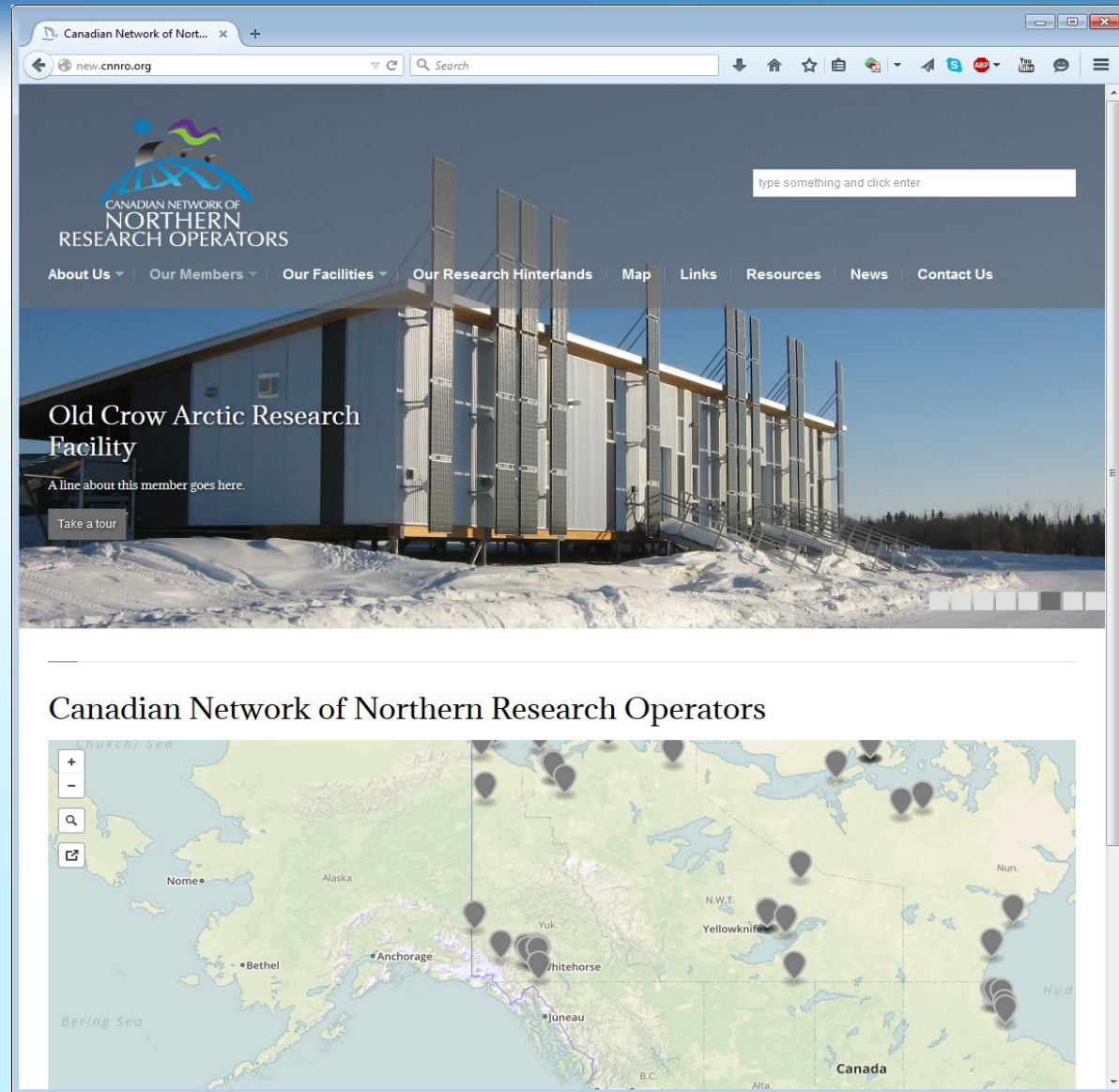
# CNNRO Website

New website will be online imminently  
<http://www.cnnro.ca>

Provides data on all members and their facilities

Includes summaries of resources and contact information

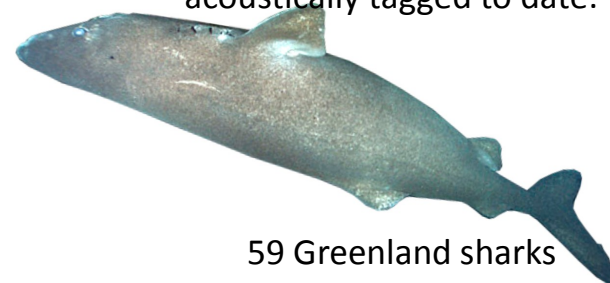
Searchable by map, region, etc.



# OCEAN TRACKING NETWORK – Arctic Research

- **Animal monitoring** (tag-receiver infrastructure)
  - Acoustic receiver arrays
    - Quantify migratory behaviours
    - Documenting food web structure
    -
- **Oceanographic measurements**
  - Context for animal movements
  - Documenting Arctic conditions

Species and numbers acoustically tagged to date:



59 Greenland sharks



7 ringed seals



120 Arctic char



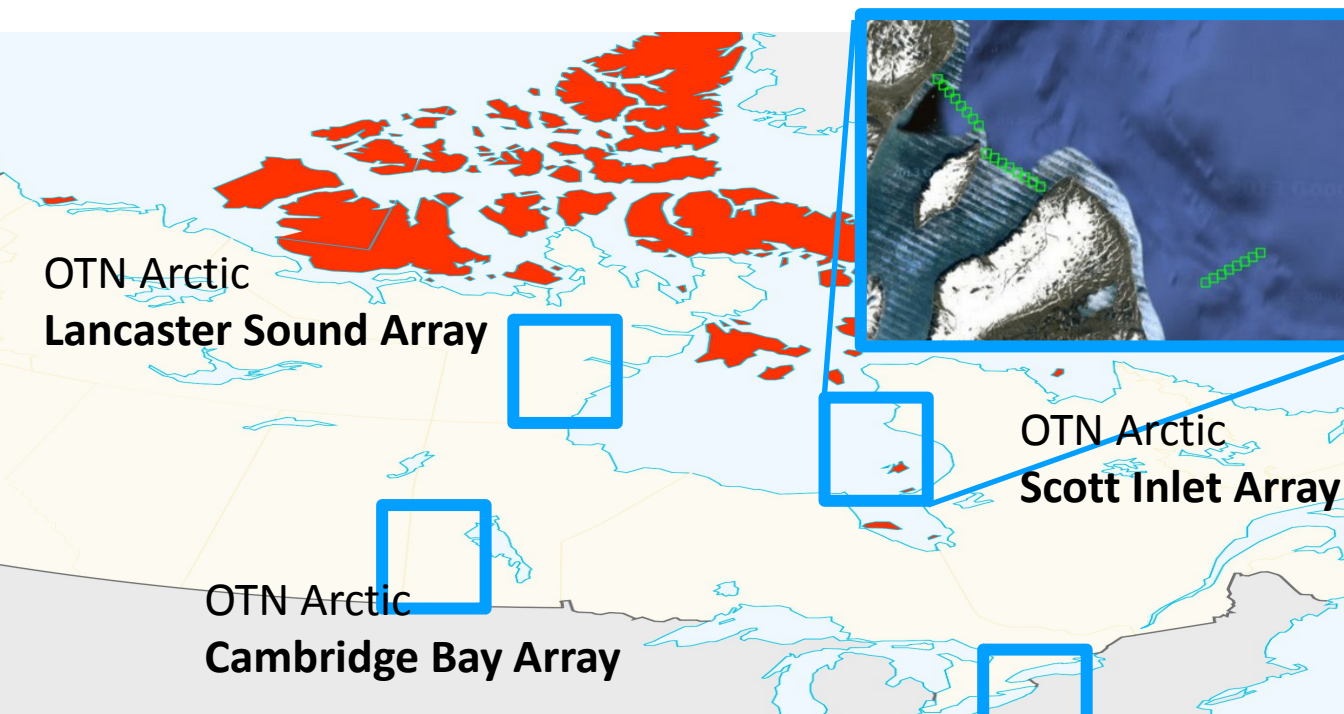
85 Arctic cod



75 Arctic sculpin



168 Greenland halibut



# Polar Continental Shelf Program

## Canada's Centre of Excellence in Logistics Support in Canada's North



To maximize efficiencies, PCSP partners with major science programs to deliver their field logistics:

- ArcticNet (Network Centre of Excellence)
- UNCLOS
- Geo-Mapping for Energy and Minerals (GEM II)
- **Canadian High Arctic Research Station (CHARS)**
- Canadian Space Agency
- Defence Research and Development Canada



AND with non-science organizations to share resources and cost effectively meet Government of Canada objectives:

- Parks Canada Operations
- Department of National Defence: **Arctic Training Centre Capability**



# PCSP Logistics Hub in Resolute, NU



\*Unofficial building name. XR codes are the official building designations in [NRCAN Real Property](#).



# Canadian High Arctic Research Station (CHARS) - Recent milestones

- March 3, 2014 Dr. Martin Raillard was appointed Chief Scientist of CHARS. He will lead the implementation of the Science and Technology **Program**.
- May 2014, the phase in of the CHARS Science & Technology **Program** launches initial field season in and around Cambridge Bay, Nunavut.
- August 23, 2014, Prime Minister Stephen Harper participated in groundbreaking ceremony to launch the construction CHARS Research **Station**, which is anticipated to take three years.
- October 23, 2014, the *Canadian High Arctic Research Station Act* introduced to establish a new federal research **Organization**, combining the Canadian Polar Commission and CHARS into a single entity; Royal Assent: December 16, 2014.





# CHARS Act

The *Canadian High Arctic Research Station Act* received Royal Assent on 16 December, 2014.

The Act:

Establishes a departmental corporation, named the Canadian High Arctic Research Station

Consolidates current portfolio investments in polar S&T by merging the Canadian Polar Commission (CPC) and CHARS

Mandate is essentially the sum of the mandates of the two organisations – ie responsibility for a large amount of Canadian Polar (ie Arctic and Antarctic) research activity

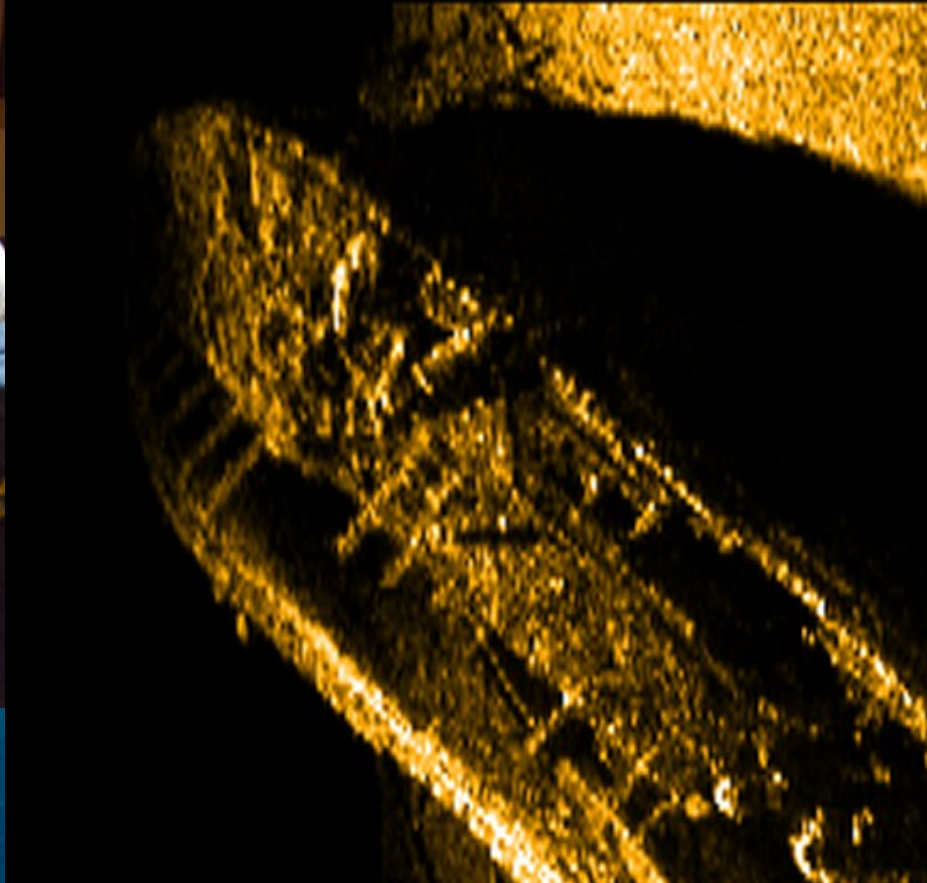
Establishes a Board of Directors, etc...

Establishes the head office in Cambridge Bay, Nunavut.

# Construction underway in Cambridge Bay



- EllisDon, in joint venture with NCC Dowland Construction Ltd., the construction manager for CHARS
  - Tendered and awarded 15 work packages as of July 2014, for a total of approximately \$30 million.
  - Over 60% of the value of the work will be undertaken by Inuit-owned or Nunavut Tunngavik Inc. (NTI) registered firms.
  - Smaller packages of work make them more accessible to Northern firms and Inuit labour. Encourages local job and skills development.
  - An estimated 150 jobs will be created locally, across the North and in more specialized sectors in other parts of Canada.
  - Construction began in August 2014 and is expected to last three years.



**Oct 1, 2014 - PM announces HMS Erebus as the discovered Franklin Expedition ship**