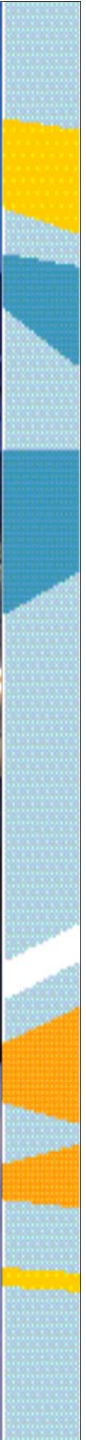




# Arctic activities 2015

## Norwegian Polar Institute

Christina A. Pedersen  
Scientific co-ordinator  
Norwegian Polar Institute





# Norwegian Young Ice drift

Main goals is to understand the effects of the new thin, first year, sea ice regime in the Arctic on energy flux, ice dynamics and the ice associated ecosystem, and local and global climate.



NG MAPS  
SOURCE: NORWEGIAN POLAR INSTITUTE

# N-ICE 2015

## Measurements:

Weather and  
Atmosphere

Oceanographic

Ice and snow properties

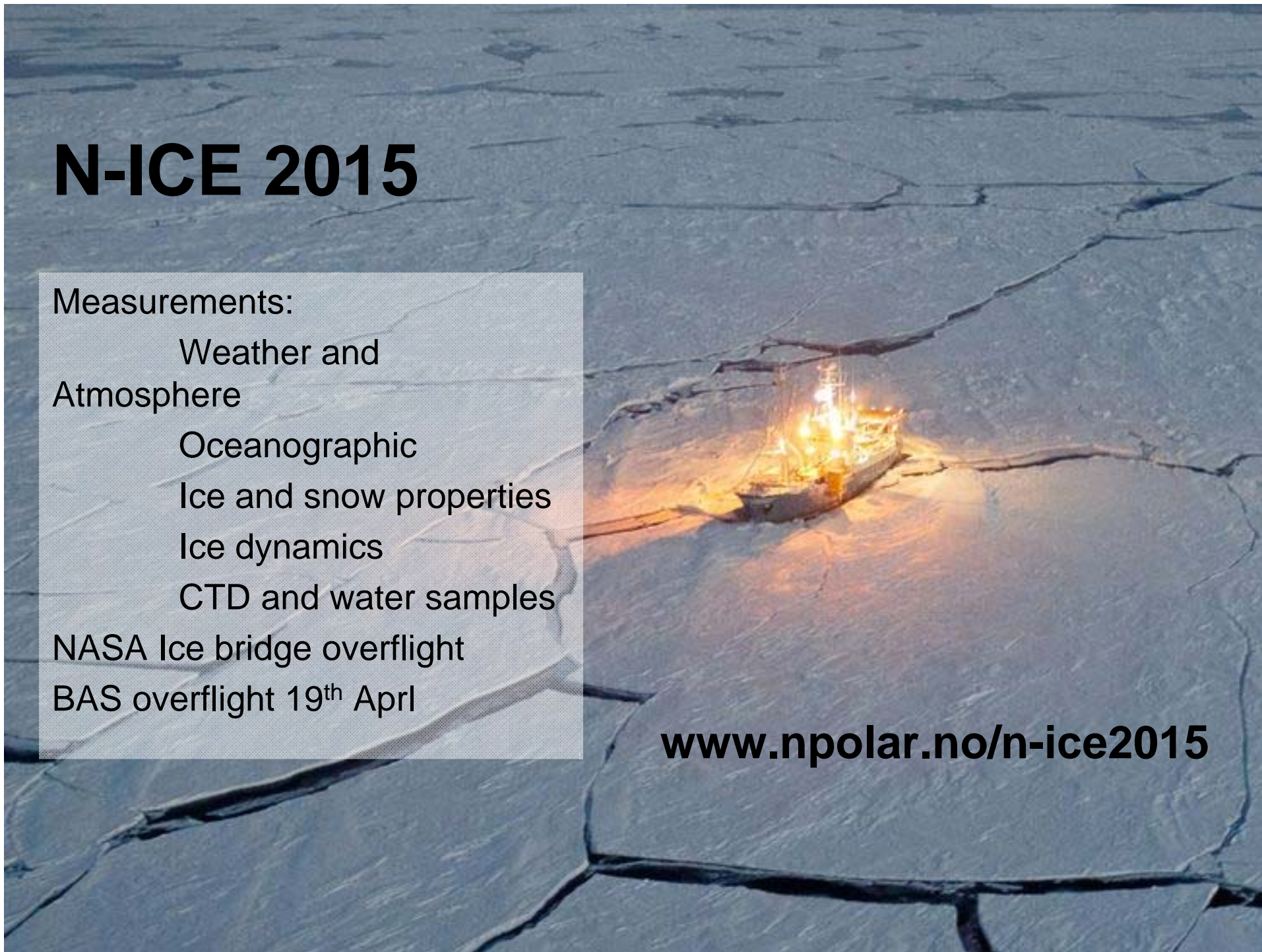
Ice dynamics

CTD and water samples

NASA Ice bridge overflight

BAS overflight 19<sup>th</sup> April

[www.npolar.no/n-ice2015](http://www.npolar.no/n-ice2015)





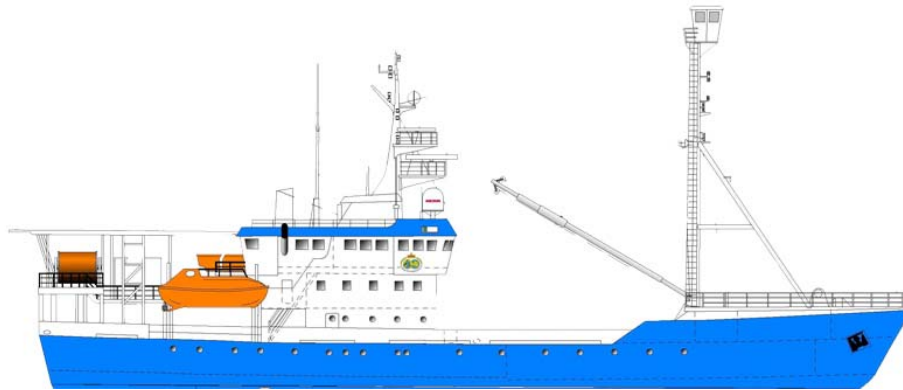
# R/V Lance cruiseplan 2015

- N-ICE drift: 5 Jan-28 June 2015
- Kongsfjorden (marine biology monitoring work): 13-17 July 2015
- Svalbard (Polar Bear Counting): 31 July -22 Aug 2015
- Fram Strait (sea ice and oceanography monitoring): 23 Aug – 12 Sept 2015
- North of Svalbard (oceanography A-TWAIN): 13-25 Sept 2015





# New Icebreaker: Kronsprins Haakon

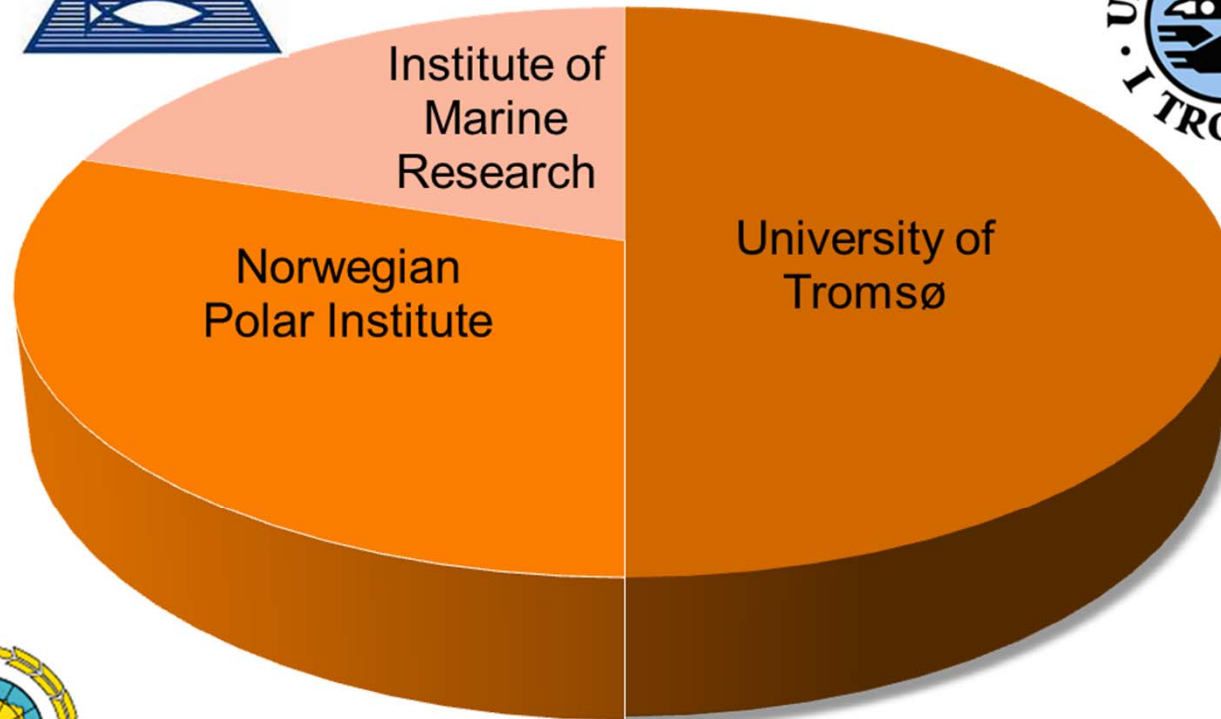




# Owners and users



## Users



Owner: NPI  
Operator: IMR





# Technical details



- Length over all (LOA): 100,0m
- Breadth: 21,0m
- Draft: 8,5m
- Gross tonnage 10900T
- 4 diesel gensets (A/C) 17MW
  - 2x5MW and 2x3,5MW
- Two (Z-drives) aft 11MW
- Two tunnel thrusters fwd 2,2MW
- Dynamic Positioning (DP 1)
- DNV-Class: POLAR 10  
ICEBREAKER
- PC-3 *Year-round operation in second-year ice which may include multi-year ice inclusions.*





# Ny-Ålesund, Spitsbergen



Map: Topo Svalbard, NPI