

# Sweden National Update FARO 2026

Åsa Lindgren, Swedish Polar Research Secretariat

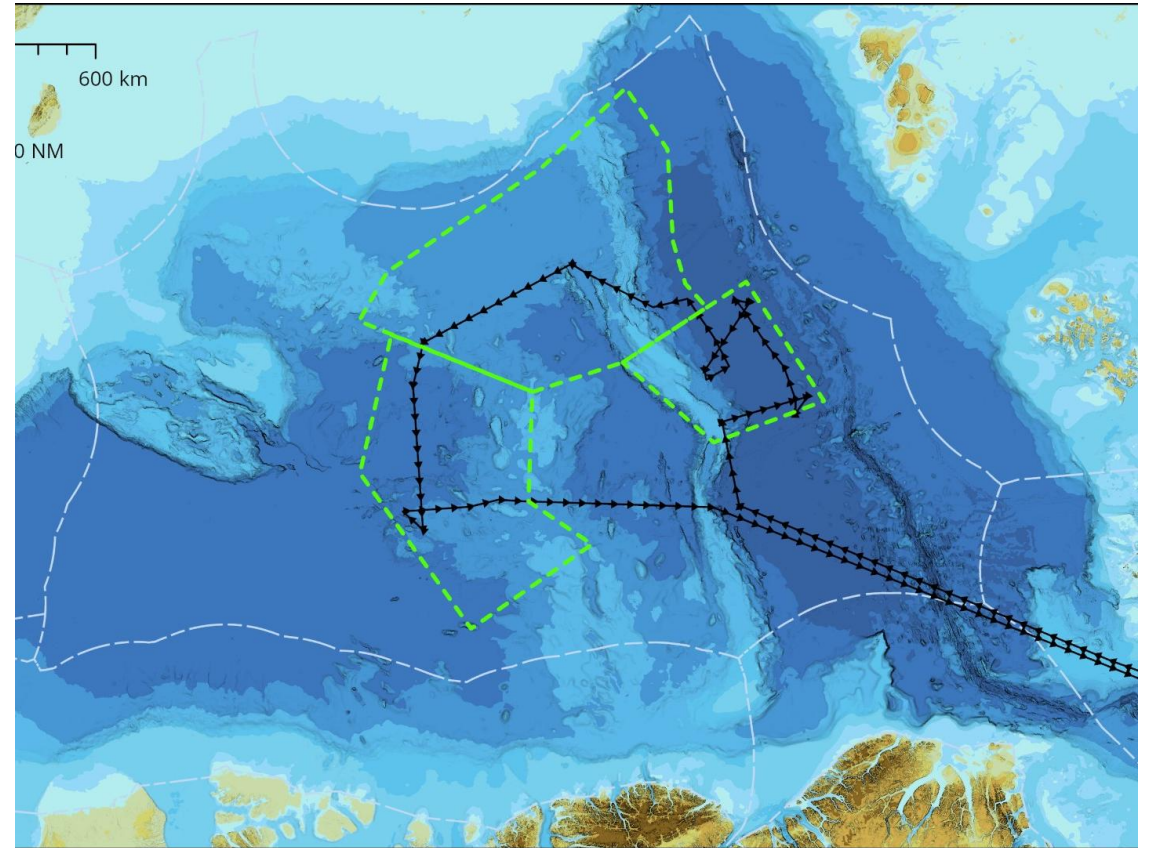
Aarhus 2026-03-28



**SWEDISH POLAR  
RESEARCH SECRETARIAT**  
POLARFORSKNINGSSEKRETARIATET

# I/B Oden: Canada –Sweden Arctic Ocean 2025 - 2027

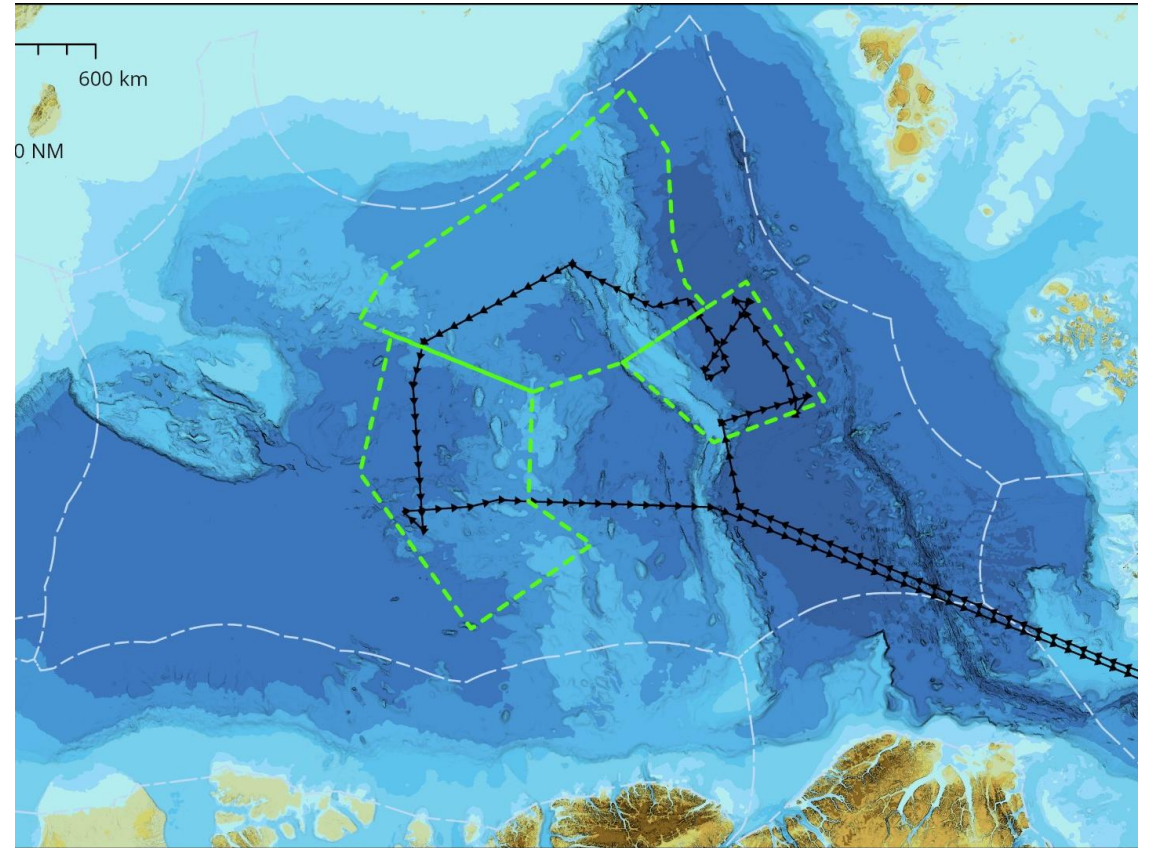
- » I/B Oden and LSSL; the Canadian UNCLOS program
- » 2026: Canadian – Swedish Early Career Research Program; 25 berths in 6 WPs
- » August 10th – September 20th
- » Mapping/coring/CTD + continuous measurements + ice stations



# I/B Oden: Polar Connect mapping expedition

» I/B Oden; July 24 – August 9

» Focus area: Gakkel Ridge



**Delayed. Waiting for decision...**



# Using satellite data for safer and more resource-efficient ship transport and research expeditions in ice-covered waters.

- » Swedish Space agency
- » Chalmers University of Technology
- » Swedish Polar Research Secretariat

# RV Skagerak – available for Arctic expeditions

- 49m Special Purpose, Baltic ice-class 1B, Polar Certified
- Small vessel manoeuvrability/flexibility with large-vessel scientific capabilities
- Advanced onboard platforms, and capacity for large LARS; flexible work deck (10, 20, 40ft containers)
- Annual voyages to the Arctic - **Available for full-ship charter with 10 science-berth**

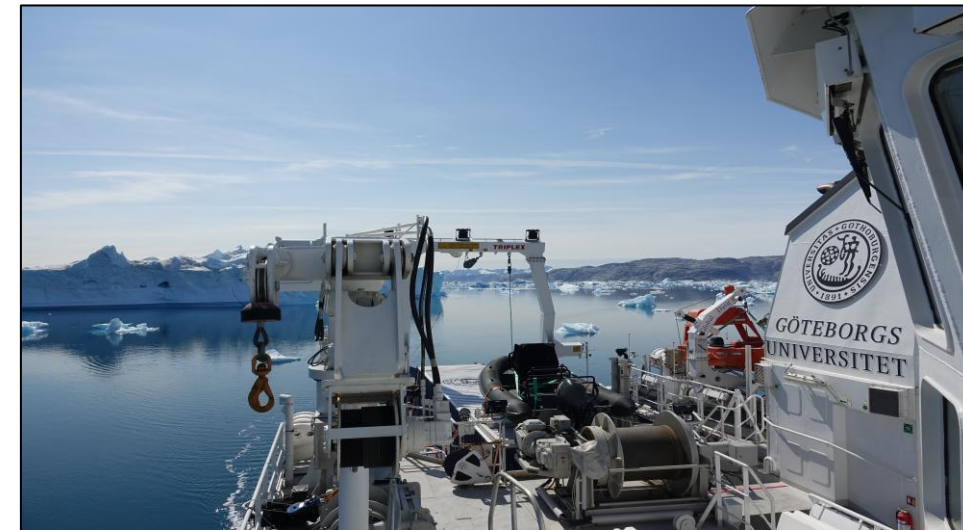
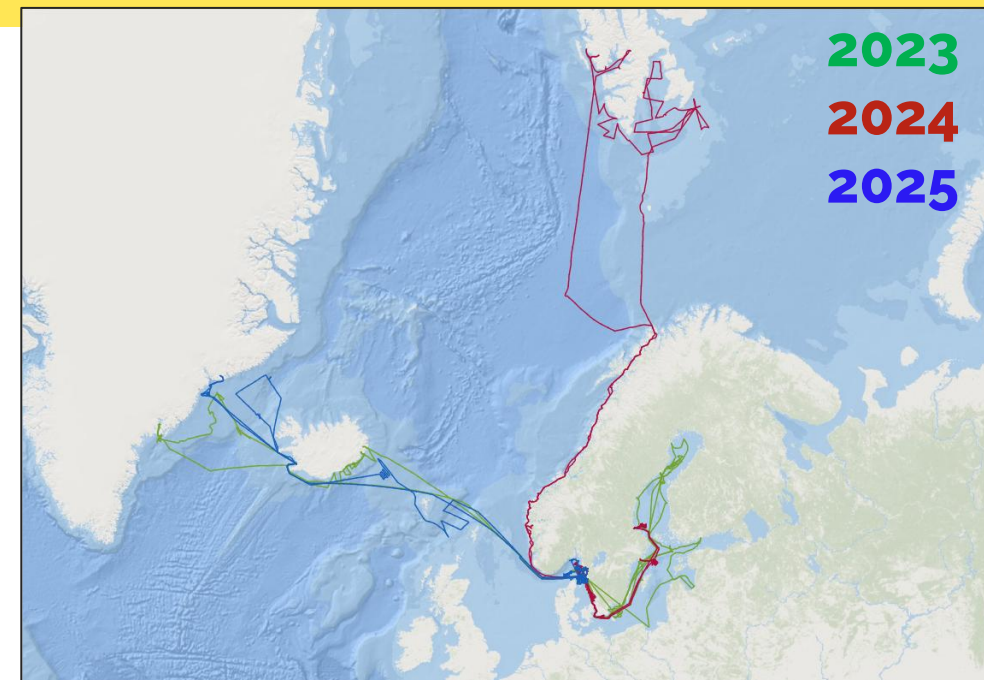


Contact: [louise.newman@gu.se](mailto:louise.newman@gu.se)

# Arctic operations of RV Skagerak

POC: [louise.newman@gu.se](mailto:louise.newman@gu.se)

- Recent charters by India's NCPOR, the British Antarctic Survey and Swedish Polar Research
- 2026 voyages to Tromsö, Bear Island, Svalbard, Reykjavik, and Greenland



Contact: [louise.newman@gu.se](mailto:louise.newman@gu.se)

## Abisko Scientific Research Station

- » WMO Centennial Observing Station – continuous environmental monitoring since 1913 in the subarctic
- » Annually 80 scientific projects ongoing
- » Busy spring and summer season ahead
- » Reconstruction of monitoring platforms – thawing permafrost requires floating platform
- » New installations of solar panel to continue to improve the station's environmental footprint



# Kristineberg Marine Research Station



58° 14'N, 11° 27'E

- » Located by deep fiord
- » Renowned for marine research and innovation since 1877
- » Providing flow through water system and research infrastructure with accommodation and direct access to coastal sea within range of deeper North Sea
- » Now further development for polar-specific research, calibration and expedition training



# Kristineberg ongoing developments



Is- och kyl laboratorier



Uppgraderad forskningsbåt



Frysförvaring



Offshore testbädd



Molekylärlaboratorium



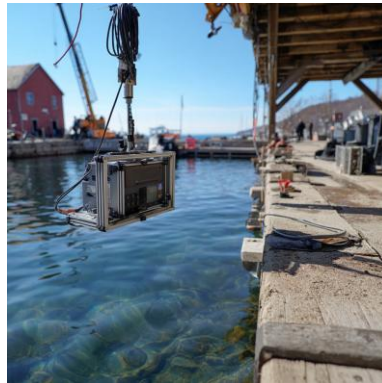
AUV verkstad



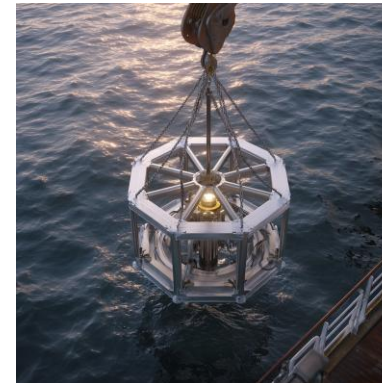
SEM mikroskop



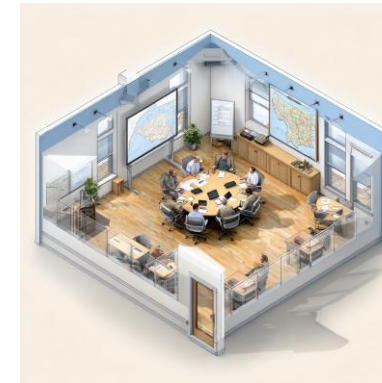
Mesokosmer & recirkulering



AUV/robot testsystem vid kaj



Avancerad CTD



Övningsanläggning för S&B



Utställning och utbildning

# Thank you!



Åsa Lindgren



[asa.lindgren@polar.se](mailto:asa.lindgren@polar.se)



[polar.se](http://polar.se)