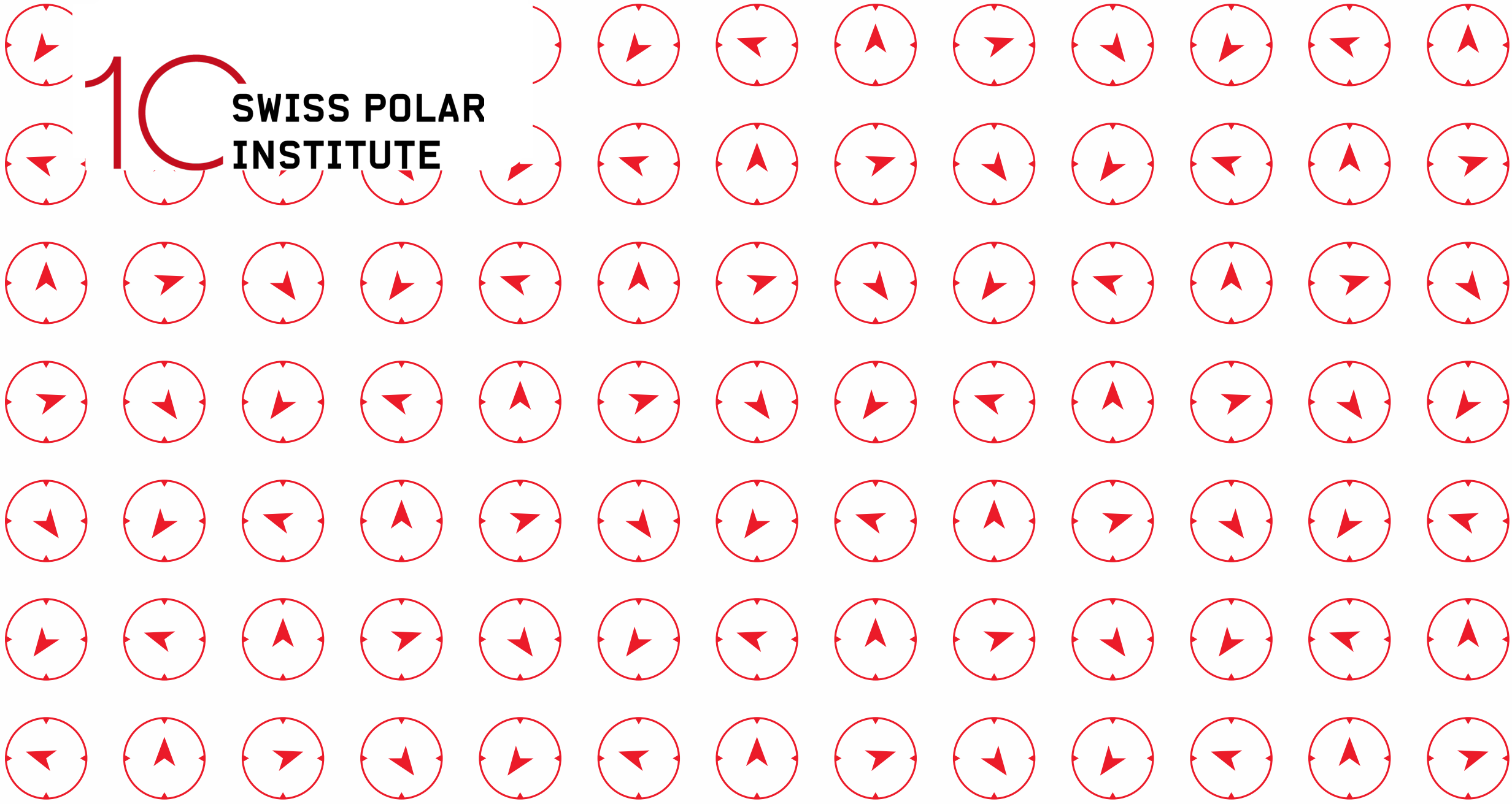


10 SWISS POLAR INSTITUTE



Swiss Polar Institute

- Midway through the 2025–2028 funding period, alongside related initiatives
- 10th anniversary in 2026 – a key milestone and strategic opportunity
- Development of a new vision with a 2035 time horizon
- Emphasis on expanding and diversifying the portfolio, building on past successes
- Next step: preparation of the funding application for the 2029–2032 period
- Submission to be developed in the context of tightening federal budgetary constraints
- Build on new strategic partnerships with key actors, including the SNSF
- IPY: National committee to be formed in fall

ARKTIS (2026-2030)

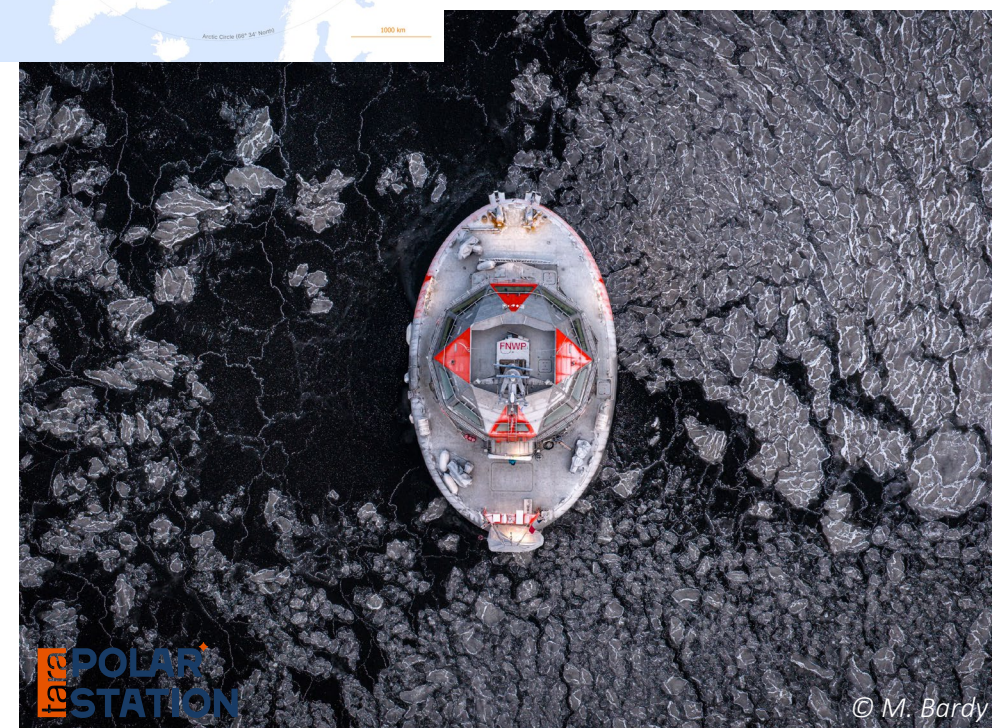
- Arctic Research and Knowledge Transfer Initiative Switzerland
- Principal Investigator: Shinichi Sunagawa, ETH Zurich
- Research Cluster Leads:
 - Shinichi Sunagawa, ETH Zurich
 - Julia Schmale, EPFL
 - Meike Vogt, ETH Zurich
 - Lenny Winkel, ETH Zurich & Eawag
 - Mirko Kovac, EPFL & Empa
- Swiss partner institutions: Eawag, Empa, EPFL, ETH Zurich,, SDSC

- > Microbial Ecology
- > Atmosphere
- > Biodiversity
- > Biogeochemistry
- > Sustainability Robotics



10 SWISS POLAR INSTITUTE

 **ARKTIS**
SPI Flagship Initiative 2026-2030



 **TARA POLAR STATION**

© M. Bardy

In collaboration with:  **tara océan**
explorer et partager



2021 United Nations Decade
of Ocean Science
2030 for Sustainable Development



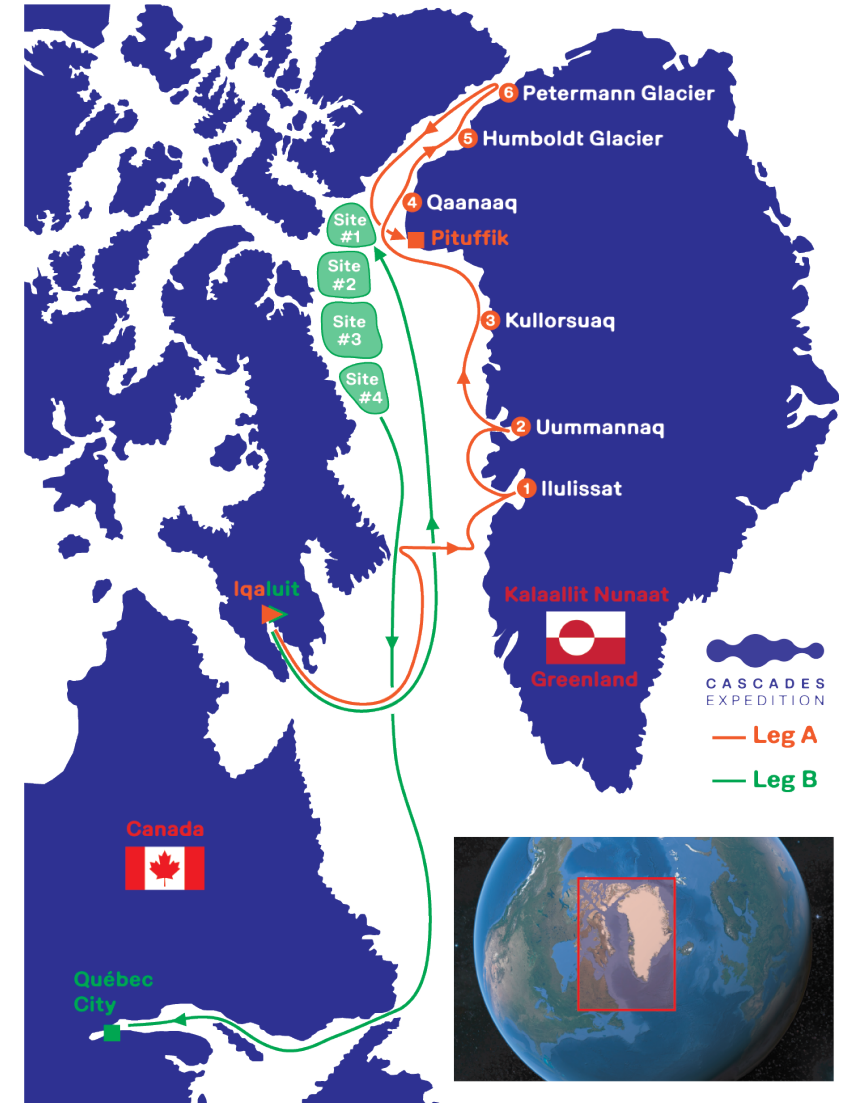
CASCADES
EXPEDITION

INSTITUT NORDIQUE DU QUÉBEC
SWISS POLAR INSTITUTE
INSTITUT POLAIRE FRANÇAIS

10 SWISS POLAR
INSTITUTE

CASCADES expedition

- Collaborative polar expedition: Switzerland, Canada, France, and Greenland
- Confront a critical challenge: the accelerating melt of Greenland's glaciers and its far-reaching impacts on the Atlantic Ocean and climate systems worldwide
- Facts and figures
 - 50+ researchers involved, including 15 Swiss
 - 15 scientific projects, including 6 Swiss
 - 1 joint outreach programme, organised by Swiss Polar Class
- Swiss research institutions: EPFL, ETH Zurich, UniGE, UNIL



FOREL Heritage

- FOREL Heritage is a 28m aluminium sailboat with Swiss flag dedicated to supporting coastal research in polar and sub-polar regions
- Based in Lorient (France)
- SPI Flagship GreenFjord worked on Forel in summer 2024 and 2025
- spending 2026 summer season in Greenland

