

Country Update China

Sandy Shan
Polar Research Institute of China
March 30, 2020, Shanghai

No.1 Operation Challenge

The Shrinking Annual Operational Budget
VS. the Expanding of the
Infrastructures

Research Stations

- Established at **Ny-Ålesund, Svalbard** in **2004**, Max for 18 summer and wintering.
- Research: **Marine Biology, Aurora & Ionosphere, Glaciology, Meteorology** etc.



Research at Yellow River Station starts from the end of April, until Next March. There are 50 research scientists from China working on 15 research projects in 2019.

Annual Planned Scientists: 60

Annual Budget: 373,650 USD

Yellow River Station at Ny-Alesund, Svalbard

Research Stations

- Inaugurated in October,2018.



China-Iceland Arctic Research
Observatory (CIAO) at Karholl, Iceland

- Objectives

A long term observatory for

- Aurora and Space Weather
- Atmosphere and Meteorology
- Oceanography
- Satellite Remote Sensing

- Research at CIAO starts from June to October. There are 8 staff from China working on 3 projects in 2019.

- Annual Planned Staff: 15

- Annual Budget: 169,200 USD

Research Vessels

XUELONG



- Length: 167 m
- Max. breadth: 22.6 m
- Power max. 13200 KW
- Displacement: 21000 t
- Max. Speed: 17.9 nm/h
- Ice-breaking capability:
1 meter ice plus 0.2 meter snow
- Personal berth: 120

Made in Ukraine in 1993 and renovated in China in 2007.

Research Vessels

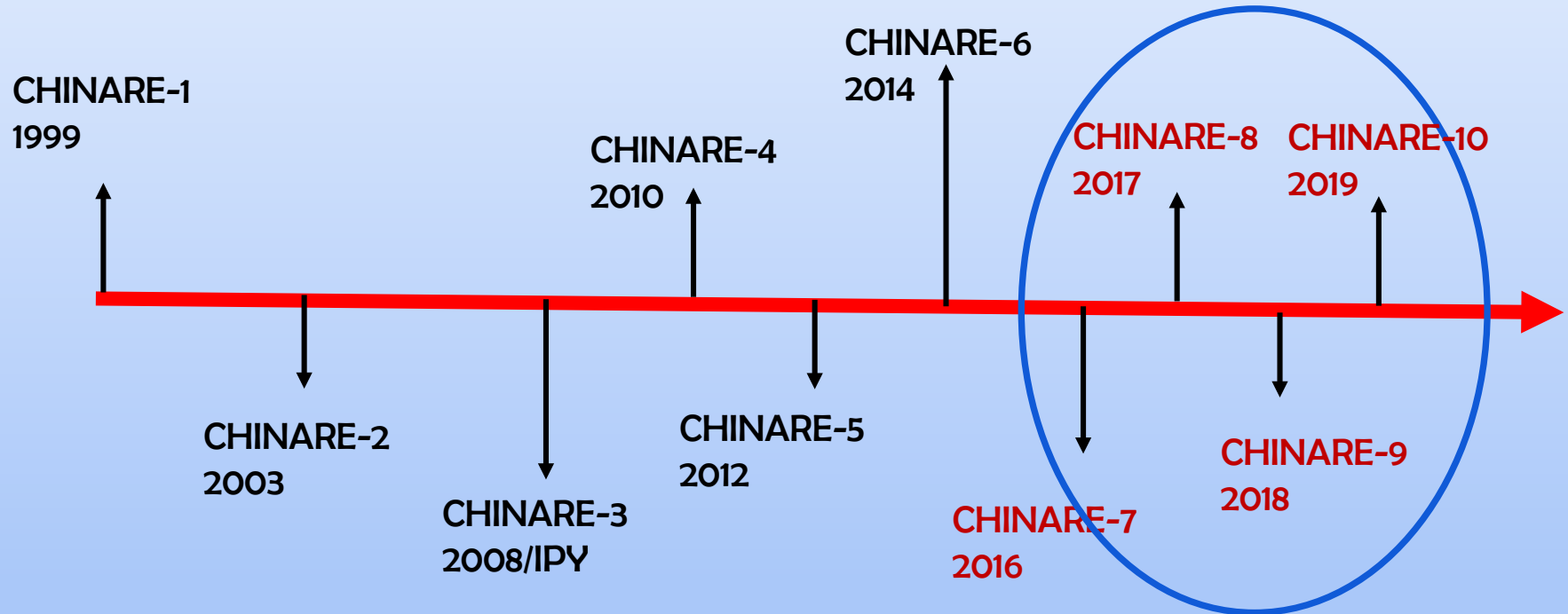
XUELONG II



- Length: 122.5 m
- Max. breadth: 22.32 m
- Power max. 23,200 KW
- Displacement: 15,078 t
- Max. Speed: 18 nm/h
- Personal berth: 90

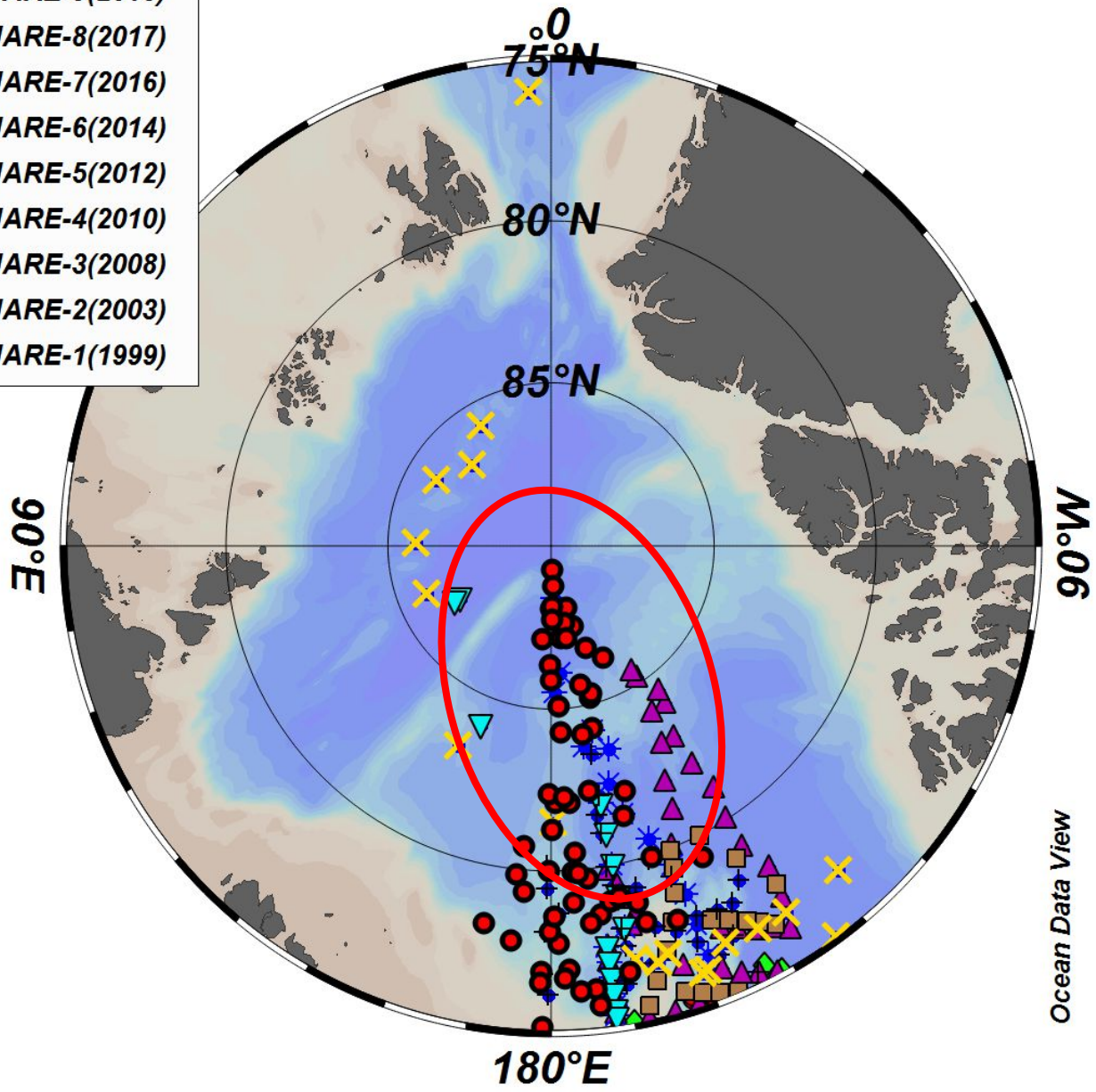
- Ice breaking, double acting (forward and backward), 1.5m sea ice plus 0.2m snow, at 2 to 3 knots.
- Hydrographic, chemical , biological, geological and geophysical investigations

CHINARE Arctic Cruise History



Organized by the MNR(SOA) of China

- CHINARE-9(2018)
- ✕ CHINARE-8(2017)
- +
- CHINARE-6(2014)
- ▼ CHINARE-5(2012)
- ✱ CHINARE-4(2010)
- ▲ CHINARE-3(2008)
- ◆ CHINARE-2(2003)
- CHINARE-1(1999)



CHINARE-11 2020



30 MARCH | 14:00-14:45 (GMT)

Tentative timetable:

- Start from Shanghai: July 1st
- Arrive in Tromso: July 27th - July 30th
- Arrive at Polarstern: August 8th - August
- Arrive in Kirkenes: August 21st - August
- Back to Shanghai: September 30th

Chinese R/V Xuelong 2's maiden voyage into the Arctic Ocean for international collaboration on Gakkel Ridge

Contact: Jiabiao Li, Tao Zhang (jibli@sio.org.cn; tao_zhang@sio.org.cn)

Agenda & Meeting Materials: to be added

Zoom Information: <https://eu01web.zoom.us/j/619549700>