

# Country Update China

Sandy Shan  
Polar Research Institute of China  
March 19, 2021

## Research Stations

- Established at **Ny-Ålesund, Svalbard** in **2004**, Max for 18 summer and wintering.
- Research: **Marine Biology, Aurora & Ionosphere, Glaciology, Meteorology** etc.



Research at Yellow River Station starts from the end of April, until Next March.  
Annual Planned Scientists: 60

Annual Budget: 373,650 USD

Yellow River Station at Ny-Alesund, Svalbard

# 2021 Projects at Yellow River Station



Summary of Yellow River station 2021 Projects

No.	Projects	PI	Related FS	Mandays
<b>A Long-term Monitoring Programs from Ministry of Nature Resource (MNR)</b>				
1	Research on seasonal fluctuation monitoring of terrestrial environment and ecosystem at the Yellow River Station area, Arctic	JF He, PRIC	Terrestrial	29 scientists, 593 Mandays
2	Research on seasonal fluctuation monitoring of marine environment and ecosystem off Kongsfjorden, Arctic	JF He, PRIC	Kongsfjorden System	
3	The monitoring and studies of glaciers Austre Lovénbreen and Pedersenbreen, Ny-Ålesund, Svalbard	HM Ma, PRIC	Glaciology	
4	2021 Annual Arctic Yellow River Station Atmosphere, Space Environment Observation	HQ Hu, PRIC	Atmosphere	
<b>B Scientific projects From NSFC and MSC</b>				
1	Research on Arctic Fog Variability in a Warming Arctic and Its Impact on Maritime Human Activities, Arctic	XY Chen, OUC	Atmosphere	11 scientists, 155 mandays
2	Research on soil ecology in Ny-Alesund, Arctic	NF Wang, FIO	Terrestrial	
3	Diversity and antimicrobial substance of endophytic fungi from plants in the Ny-Ålesund Region, Svalbard	T Zhang, IMB	Terrestrial	
4	Research on the Observational Research on the Arctic Land-air Energy Exchange Processes	H Zou, IAP CAS	Atmosphere	
5	Polar microbial resources and their life characteristics, environmental ecological effects and application potentials	YZ Zhang, OUC	Terrestrial	
6	Research on coastal wetlands, Arctic, using remote sensing technology	GB Ren, FIO		
<b>C Evaluation projects</b>				
1	Study on the Status of Bird Survival and Protection in the Arctic Yellow River Station and Its Nearby Areas	ZW Zhang, BMU		1 scientist 28 mandays
2-6	To be adjusted	SJ Xu, CAA		

<b>D International collaboration (Sino-Norway International Cooperation)</b>				
1	Investigation and Monitoring of Microplastics Pollution in the Fjord of Svalbard Island, Arctic	ZB Lu, TJU	Kongsfjorden System	0 mandays
2	FACE-IT project in Horizon 2020 program	R Zhang, XMU	Kongsfjorden System	6 persons, 19 mandays
<b>E Logistic and supporting project</b>				
1	Station Management	ZY Hu, F He, PRIC		8 persons, 482 mandays

Due to COVID, all Chinese activities in Ny-Alesund were cancelled in 2020, and all the projects are postponed to 2021.

# Research Stations

- Inaugurated in October,2018.



China-Iceland Arctic Research  
Observatory (CIAO) at Karholl, Iceland

- Objectives
  - A long term observatory for
    - Aurora and Space Weather
    - Atmosphere and Meterology
    - Oceanography
    - Satellite Remote Sensing
- Research at CIAO starts from June to October. There are 8 staff from China working on 3 projects in 2019.
- Annual Planned Staff: 15
- Annual Budget: 169,200 USD

## Research Vessels

### *XUELON* *G*



- Length: 167 m
- Max. breadth: 22.6 m
- Power max. 13200 KW
- Displacement: 21000 t
- Max. Speed: 17.9 nm/h
- Ice-breaking capability:  
1 meter ice plus 0.2 meter snow
- Personal berth: 120

Made in Ukraine in 1993 and renovated in China in 2007.

## Research Vessels

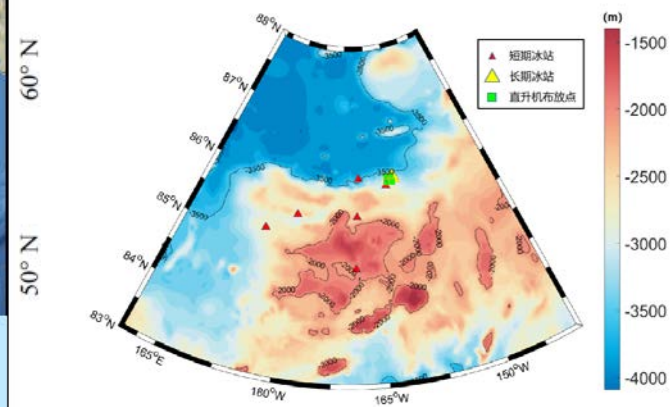
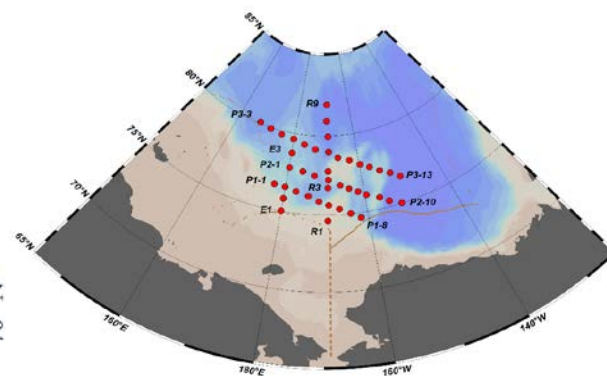
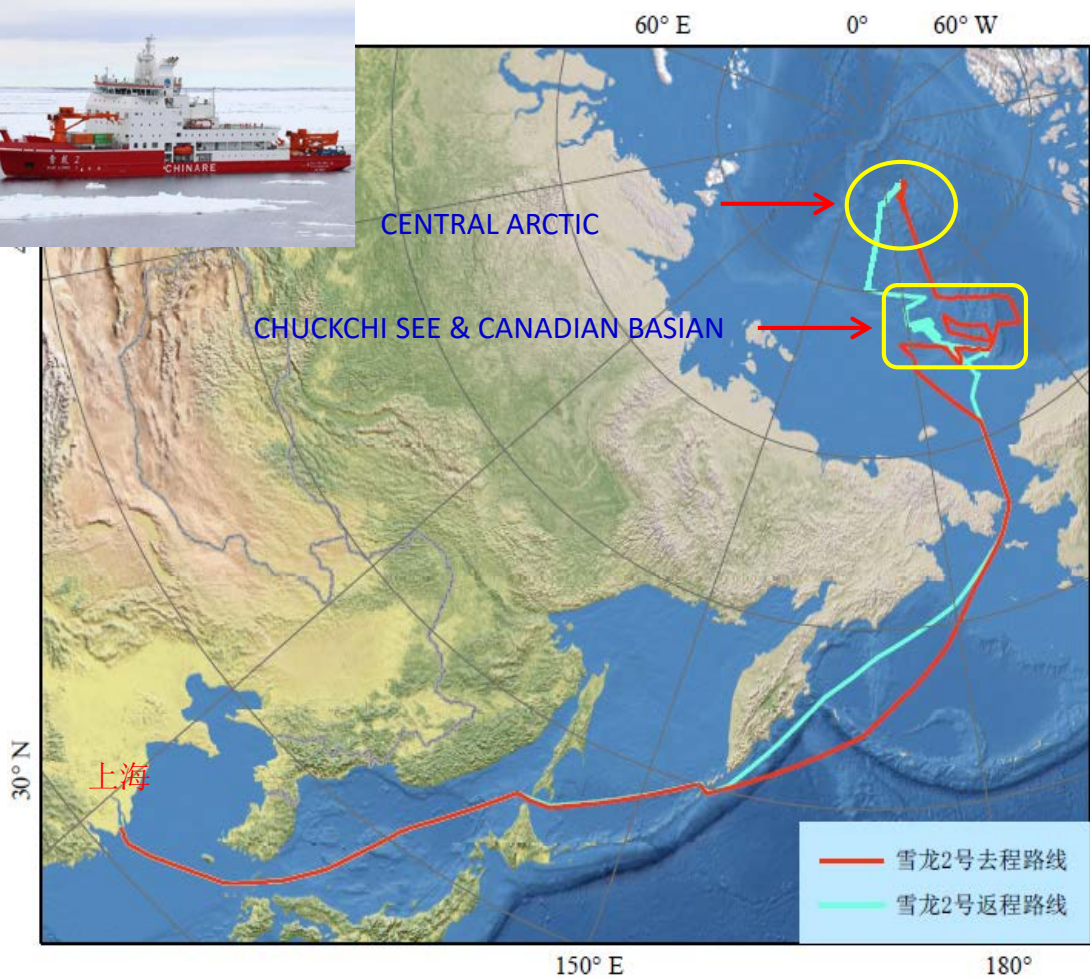
### *XUELONG II*



- Length: 122.5 m
- Max. breadth: 22.32 m
- Power max. 23,200 KW
- Displacement: 15,078 t
- Max. Speed: 18 nm/h
- Personal berth: 90

- Ice breaking, double acting (forward and backward), 1.5m sea ice plus 0.2m snow, at 2 to 3 knots.
- Hydrographic, chemical , biological, geological and geophysical investigations

# CHINARE-11 2020



# CHINARE-12 2021



Xuelong 2 will have her second voyage to Arctic Ocean

