

Photo: INTERACT stations

# INTERACT

- A network of northern cold region research stations

International collaboration – mobility - tools - outreach/education



The INTERACT network of research stations provides a circum-arctic platform for coordinated research and monitoring.



International collaboration  
Mobility - tools - outreach/ education  
for safe, efficient and sustainable science

78 research stations  
+ 21 Russian stations on pause



# INTERACT

## Non-Profit association

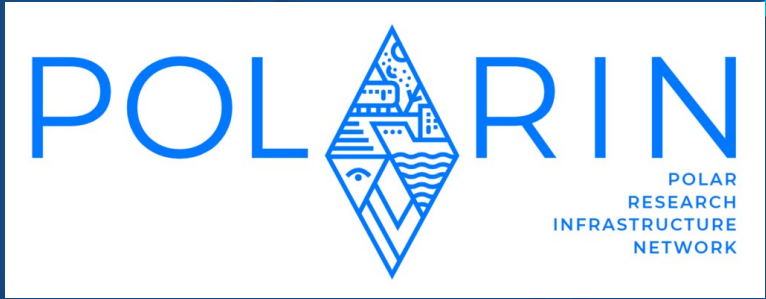


# Legal entity

→ Project partner



Planetocene2050



# Envisaged IPY activities (with collaborators)

Offer access to arctic infrastructures in support of IPY and implementation of international science priorities.

Overview of existing research infrastructure

Operate an IPY Arctic Access Programme

Provide guidance for responsible, safe, efficient and sustainable science

Overview of Arctic Permit Systems

Access to guidance and training materials



# Addressing uncertainties

Remote sensing

CMIP6 ESM

In-situ data

Infrastructure

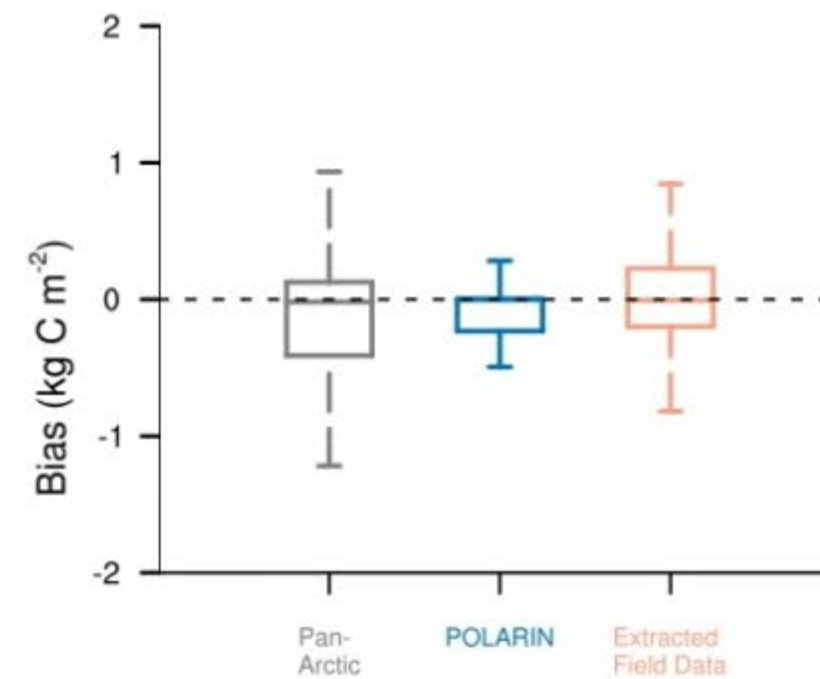
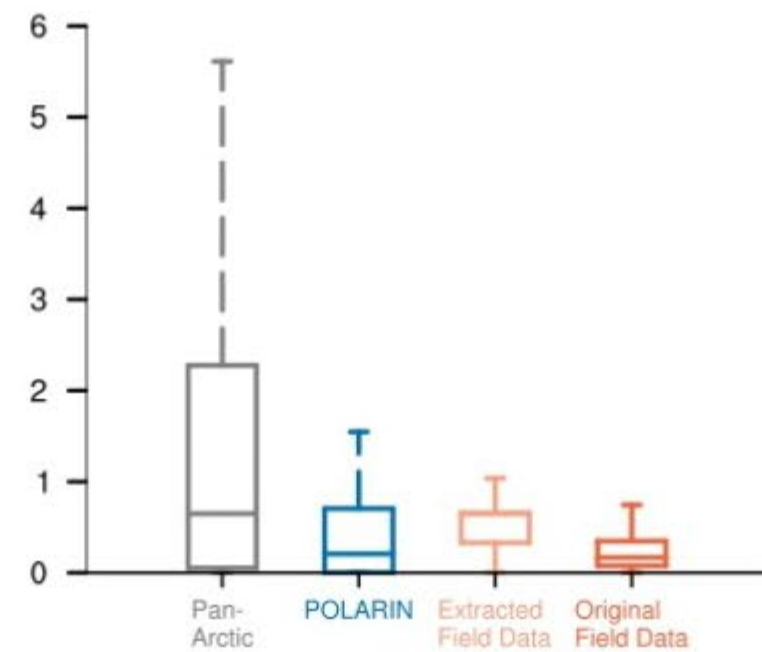
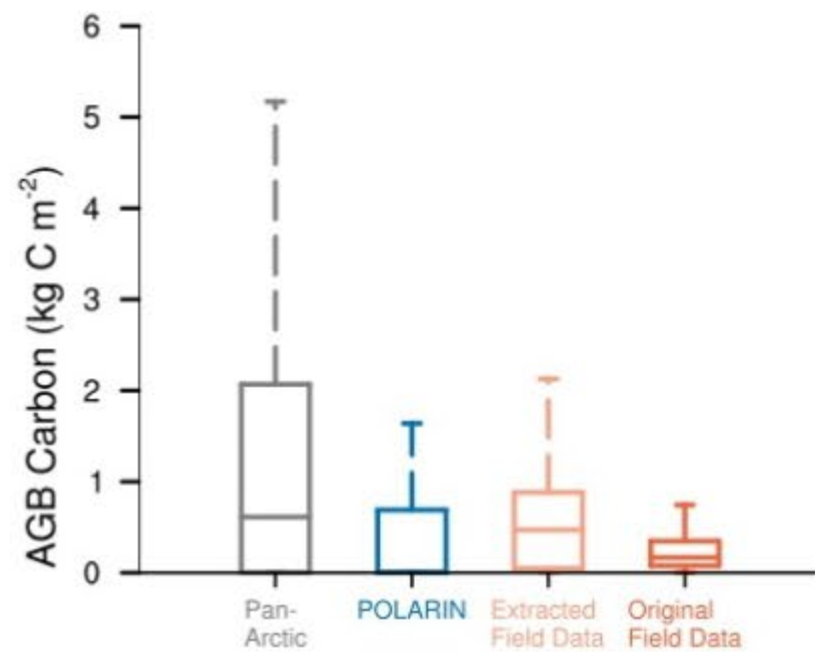
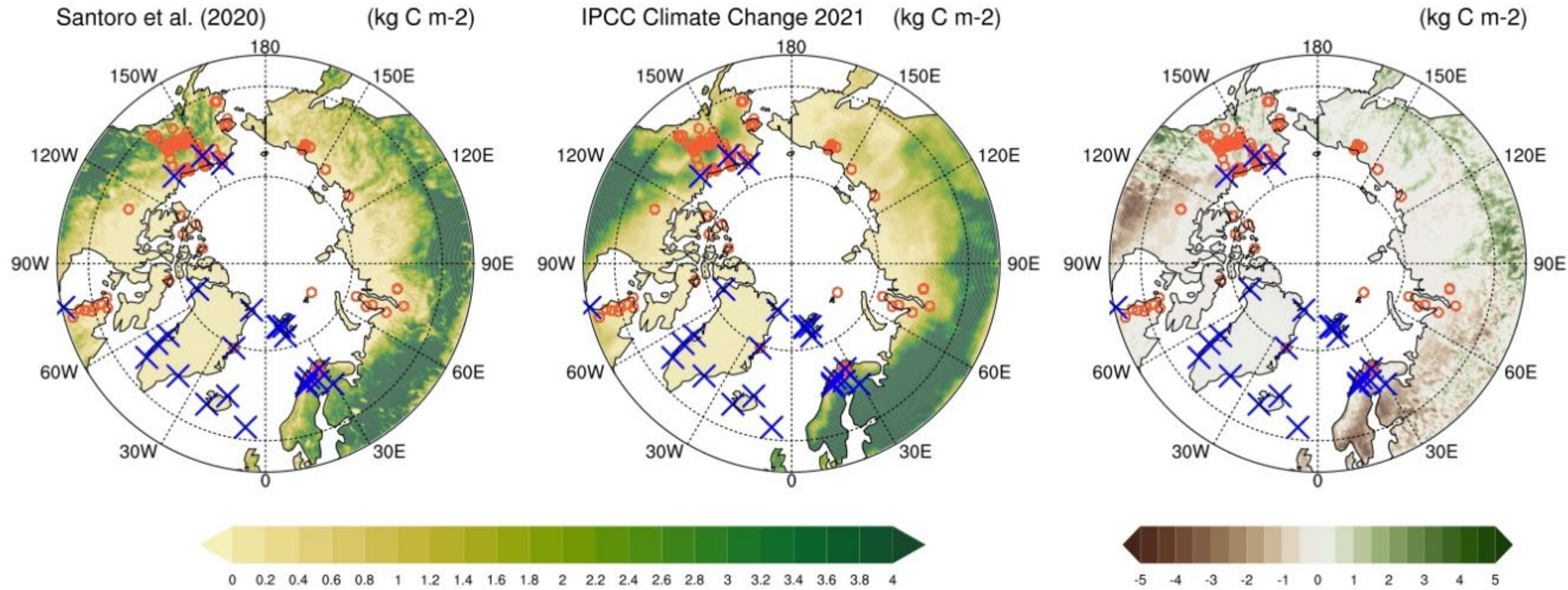


# Above Ground Biomass

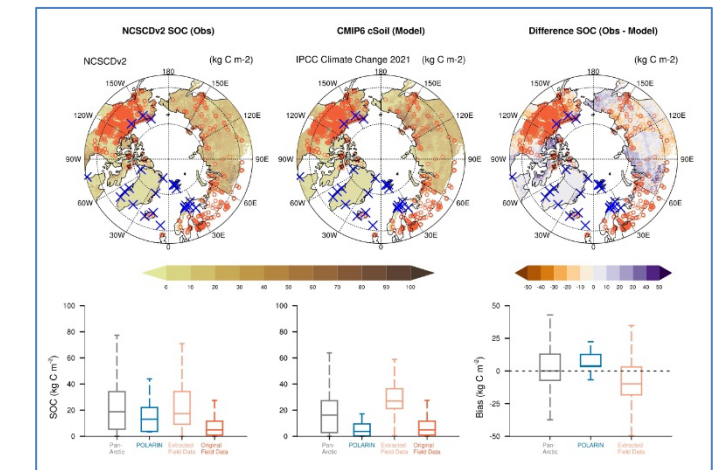
ESA CCI AGB Carbon (Remote sensing)

CMIP6 AGB Carbon (Model)

Difference AGB (Remote sensing - Model)

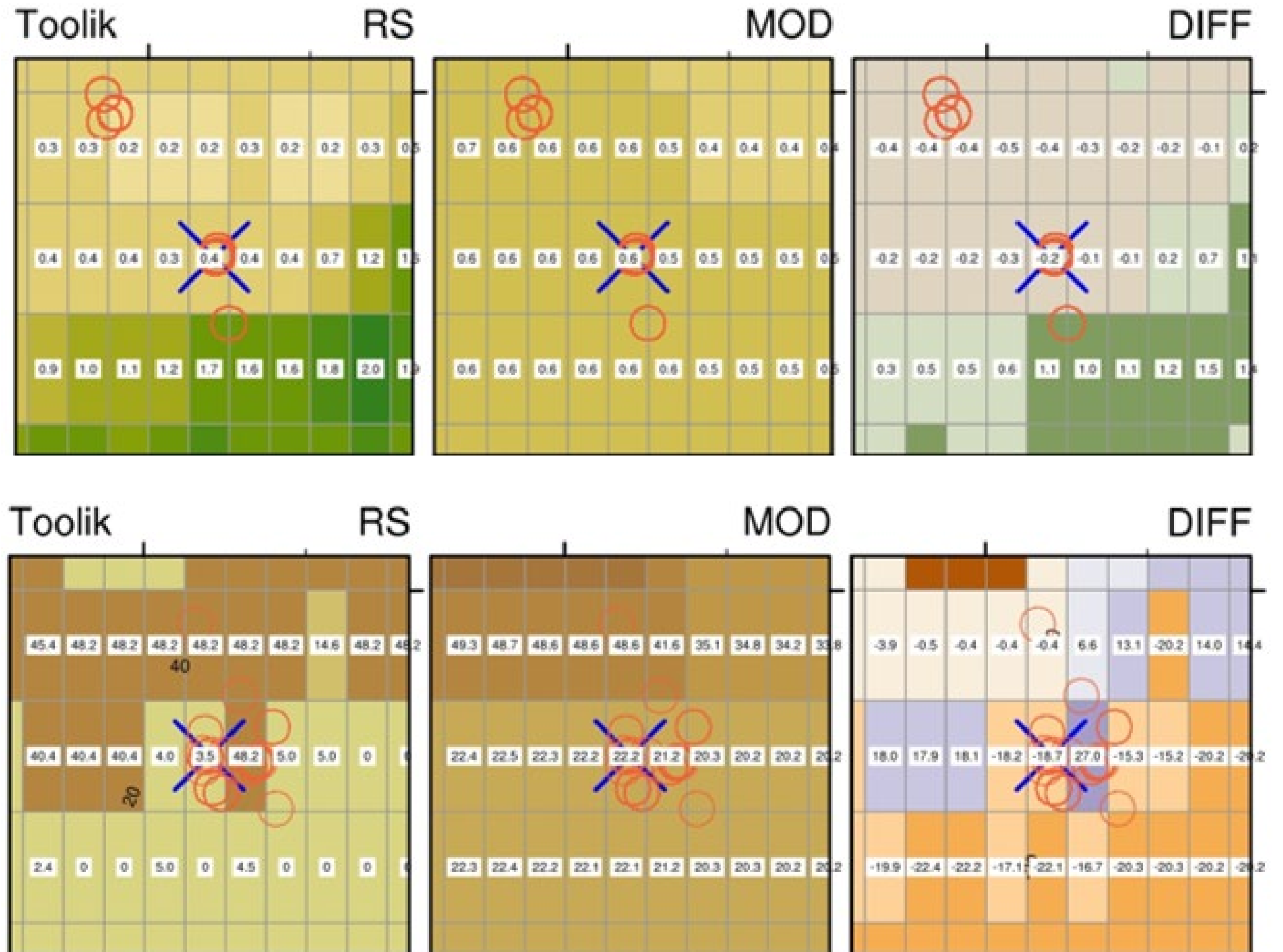


## Soil Organic Carbon



# Example: Toolik Field Station

Above Ground Biomass  
Soil Organic Carbon





# Let's INTERACT

Elmer Topp -Jørgensen

[jetj@ecos.au.dk](mailto:jetj@ecos.au.dk)

[www.interactassociation.org](http://www.interactassociation.org)

FARO Annual Meeting, 28 March 2026

