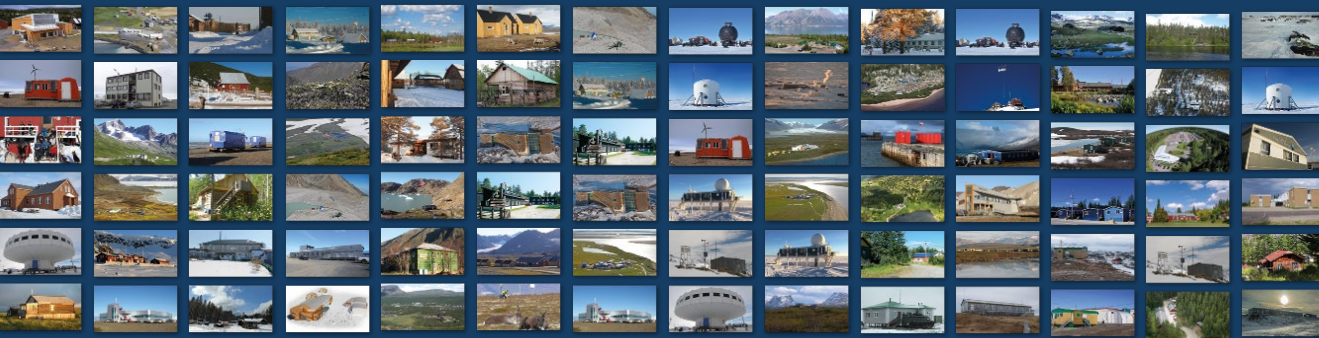
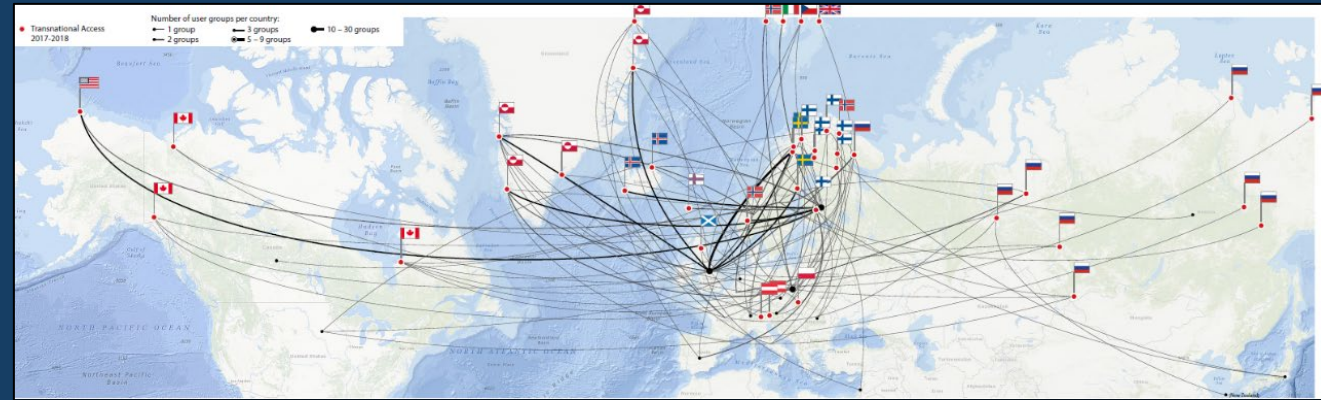


INTERACT

III and Non-profit association

INTERACT III – extended to end of 2024

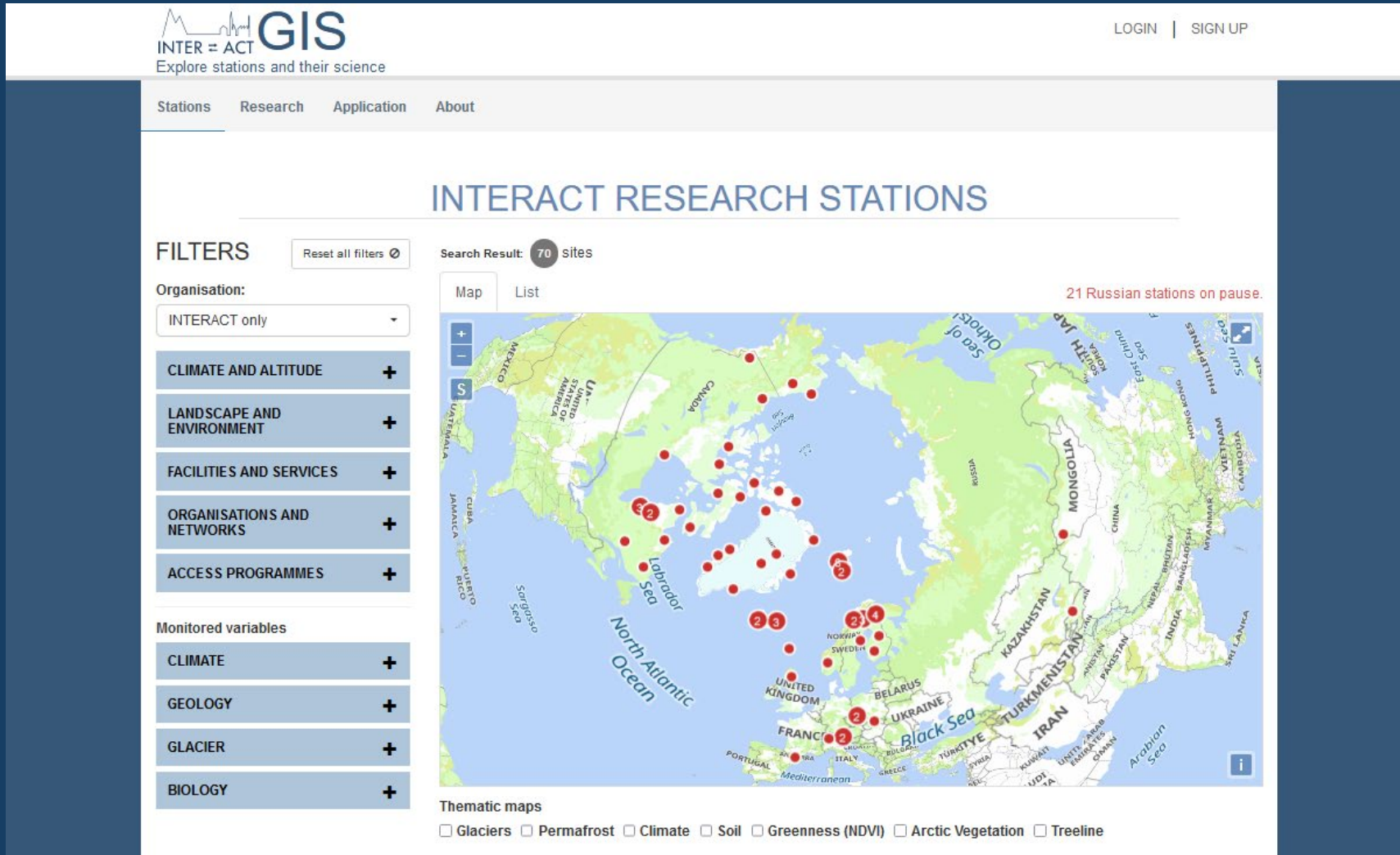
- Coordination
- Transnational Access
- Station Managers' Forum



Presentation

- INTERACT tools
- New publications/tools 2024
- The future

All you need to know about research stations



The screenshot displays the INTERACT GIS web application. At the top, the logo reads "INTER = ACT GIS" with the tagline "Explore stations and their science". Navigation links for "Stations", "Research", "Application", and "About" are present. A "LOGIN | SIGN UP" link is in the top right. The main heading is "INTERACT RESEARCH STATIONS". On the left, a "FILTERS" panel includes a "Reset all filters" button and a "Search Result: 70 sites" indicator. The "Organisation:" dropdown is set to "INTERACT only". Below this are five expandable filter categories: "CLIMATE AND ALTITUDE", "LANDSCAPE AND ENVIRONMENT", "FACILITIES AND SERVICES", "ORGANISATIONS AND NETWORKS", and "ACCESS PROGRAMMES", each with a "+" icon. Under "Monitored variables", there are five categories: "CLIMATE", "GEOLOGY", "GLACIER", and "BIOLOGY", each with a "+" icon. The main map area shows a map of the Arctic region with red dots representing research stations. A red text label above the map states "21 Russian stations on pause." Below the map, there are "Thematic maps" checkboxes for "Glaciers", "Permafrost", "Climate", "Soil", "Greenness (NDVI)", "Arctic Vegetation", and "Treeline".



INTERACT GIS

Information on
+70 stations

Search for
suitable stations

*Location, climate,
landscape, natural
environment, facilities,
services, monitored
variables, scientific
networks, etc.*

Arctic science permits and regulations



Arctic permit systems

Overview of national permit systems in all arctic countries

In support of the Arctic Council's Agreement on Enhancing International Arctic Scientific Cooperation

The screenshot shows the INTERACT website interface. At the top is a dark blue navigation bar with links: ABOUT, FIELD SITES, COLLABORATIONS, NEWS, OUTREACH, DELIVERABLES, PUBLICATIONS, and CONTACT US. Below this is a white header with icons and labels for 'INTER = ACT', 'ACCESSING THE ARCTIC', 'MANAGING STATIONS', 'HANDLING DATA', and 'RAISING ARCTIC AWARENESS'. A secondary navigation bar contains icons for 'COPING WITH CHANGE', 'MANAGING RISKS', 'USING DRONES', 'TRACKING BIODIVERSITY', 'TOURISM', 'POLLUTION', 'ARTIFICIAL INTELLIGENCE', 'TRANSPORT AND COMMUNICATION', and 'EXTREME WEATHER'. Below these are 'INTERACCESS', 'INTERACT GIS', and 'DATA PORTAL' links. The main content area is titled 'PERMITS AND REGULATIONS FOR ARCTIC FIELDWORK' and includes social media links for Facebook, Twitter, and ResearchGate. A paragraph states: 'Conducting research in the Arctic often requires permits founded in national or local legislation. This information platform aims at providing an overview of the most common rules, regulations and permit types relevant for scientists travelling to, and working in, the following arctic countries:'. To the left is a vertical list of flags and country names: Alaska, USA; Canada; Faroe Islands; Finland; Greenland; Iceland; Norway; Russia; Svalbard, Norway; and Sweden. To the right is a grid of 12 images showing various Arctic landscapes and research activities, with labels for Svalbard, Norway; Alaska, USA; Greenland; Faroe Island; Finland; Iceland; Norway; Russia; Sweden; and Canada.

INTERACT Publications

Infrastructure operators:

- Management planning handbook
- Research and monitoring guide

Fieldwork planning:

- Fieldwork Planning Handbook
- Practical Field Guide

Thematic guidebooks:

- Communication and Navigation
- Reducing CO2 Emissions
- Reducing Environmental Impacts

Outreach products:

- Stories of Arctic Science (I and II)
- Images of Arctic Science



Other publications from INTERACT

INTERACT Station Catalogue is describing all research stations that are part of INTERACT. For each research station, the catalogue contains a description of the station, its facilities, its monitoring efforts and its natural environment.

INTERACT Science Stories contains stories of the cutting-edge arctic research being supported by INTERACT Transnational Access, as told by 138 scientists from 17 countries.

INTERACT Fieldwork Planning Handbook is a textbook for scientists to facilitate safe fieldwork and maximise the results of research and monitoring activities in the Arctic and other cold regions of the Northern Hemisphere.

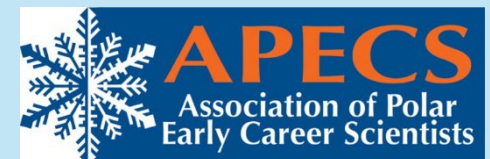
INTERACT Practical Field Guide is a guide book to be taken into the field with information on best practices and safety aspects in relation to fieldwork in the Arctic.

INTERACT Research and Monitoring provides an overview of research and monitoring activities conducted at INTERACT stations. It presents an overview of scientific disciplines and monitored parameter groups and it provides recommendations for monitoring.

INTERACT Management Planning for Arctic and Northern Alpine Research Stations is a textbook in which research station managers from the INTERACT network share their knowledge of relevance to management of research stations in cold regions.



Publications



Virtual Access

- INTERACT Data Portal

1700+ datasets
25 research stations

4500 VA Users
136 countries



DATASETS ORGANIZATIONS STATIONS COLLABORATORS TOPICS ABOUT

INTERACT Data Portal
Virtual Access Single Entry Point

Search from 1740 datasets

905 Keywords 25 Stations 26 Organizations 1.7k Datasets

Recent Datasets

EXPLORE DATASETS

- Point measurements of winter mass balance of Fr...
0 recent views on 28-11-2022
Station: Sonnblick Observatory
- Point measurements of annual mass balance of Fr...
0 recent views on 28-11-2022
Station: Sonnblick Observatory
- Mass balance of Freya Glacier, Greenland, in 20...
0 recent views on 28-11-2022
Station: Sonnblick Observatory
- Mass balance on elevation zones of Freya Glacie...
0 recent views on 28-11-2022
Station: Sonnblick Observatory
- Point measurements of winter mass balance of Fr...
0 recent views on 28-11-2022
Station: Sonnblick Observatory
- Point measurements of annual mass balance of Fr...
0 recent views on 28-11-2022
Station: Sonnblick Observatory

Research Stations

EXPLORE STATIONS

- Pallas-Sodankylä Stations
29 Datasets
- Toolik Field Station
0 Datasets
- Kluane Lake Research Station
0 Datasets

<https://dataportal.eu-interact.org/>

Powered by ckan

Co-funded by the Horizon 2020 programme of the European Union

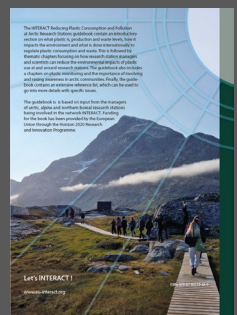
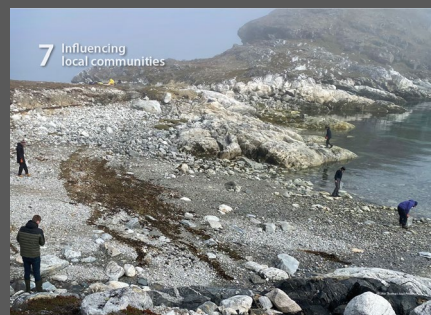
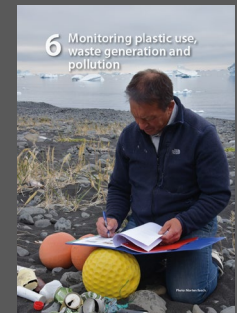
Log in or Register
About Interact Data Portal
CKAN API
Cookie policy
Privacy policy
Terms and conditions

Out soon

INTERACT

International Network for Terrestrial Research and Monitoring in the Arctic
Reducing Plastic Consumption and Pollution at Arctic Research Stations

Station management and user behaviour



ARCTIC COUNCIL WORKING GROUP

CAFF

ABOUTOUR WORKNEWSCONTACT

Search

Approach

FECs MonitoringExtreme Events

FECs MONITORING

What, where, and how to monitor Arctic biodiversity (and other advice) from the Circumpolar Biodiversity Monitoring Program (CBMP).

The CBMP has identified targets for monitoring, called Focal Ecosystem Components (FECs). FECs likely indicate changes in the overall environment and have been prioritized for various reasons including importance to Arctic peoples, circumpolar distribution, monitoring feasibility, available data, and more. Here the CBMP provides advice for gathering data and reporting on FECs.

FECs have been identified in ecosystem-based Arctic Biodiversity Monitoring Plans (Marine, Freshwater, Terrestrial, Coastal), and refined via State of the Arctic Biodiversity reporting processes. CBMP products represent agreement across Arctic states on how to coordinate and generate better results from existing monitoring efforts, and identify gaps in knowledge and ongoing monitoring. Arctic Biodiversity Monitoring Plan implementation—including monitoring the FECs below—supports efforts to compile, harmonize and compare results from existing biodiversity and ecosystem monitoring efforts.

All species illustrations by José Ortega.

EcosystemSpecies groupHabitatExport CSV

Freshwater

DIATOMS (BENTHIC FRESHWATER SAMPLES)

PHYTOPLANKTON (FRESHWATER)

ZOOPLANKTON (FRESHWATER)

BENTHIC INVERTEBRATES (FRESHWATER)

MACROPHYTES

FISH (FRESHWATER)

BIRDS (AQUATIC/PISCIVORE)

Marine

BACTERIA, ARCHAEA (SEA ICE)

BACTERIA, ARCHAEA (MARINE PLANKTON)

MICROALGAE AND OTHER PROTISTS (SEA ICE BIOTA)

MICROBIAL EUKARYOTES

PHYTOPLANKTON (MARINE)

MEIOFAUNA (SEA ICE BIOTA)

UNDER-ICE MACROFAUNA

ZOOPLANKTON (MARINE)

MICROFAUNA (BENTHOS)

MEIOFAUNA (BENTHOS)

MACROBENTHOS

MEGABENTHOS

BENTHIC FISHES

ARCTIC CHAR

ATLANTIC COD

BERING FLOUNDER

ARCTIC COUNCIL WORKING GROUP

CAFF

ABOUTOUR WORKNEWSCONTACT

Search

Approach

FECs MonitoringExtreme Events

EXTREME EVENTS

Based on Christensen, T., J. Payne, M. Doyle, G. Ibarguchi, J. Taylor, N.M. Schmidt, M. Gill, M. Svoboda, M. Aronsson, C. Behe, C. Buddle, C. Cuyler, A.M. Fosaa, A.D Fox, S. Heiðmarsson, P. Henning Krogh, J. Madsen, D. McLennan, J. Nymand, C. Rosa, J. Salmela, R. Shuchman, M. Soloviev, and M. Wedege. 2013. The Arctic Terrestrial Biodiversity Monitoring Plan. CAFF Monitoring Series Report Nr. 7. CAFF International Secretariat. Akureyri, Iceland. ISBN 978-9935-431-26-4

Spatial ScaleTemporal ScaleExport CSV

TEMPERATURE EXTREMES

PRECIPITATION EXTREMES

EXTREME ICE/SNOW COVER

ICING EVENTS

WIND EXTREMES

EVENTS OF EXTREME CHARACTER



[Who we are](#) [Where we work](#) [Members](#) [What we do](#) [News](#) [How we work](#) [Search](#) [Facebook](#) [Twitter](#) [Instagram](#)

[Partner up with INPA](#)

[Support/
Donate](#)

[Adopt](#)

[Membership](#)

A network of Arctic research stations

Non-profit Association

INTERACT Non-Profit Association

INPA is an [INTERACT](#) initiative. INTERACT is a network of 89 terrestrial field bases scattered across all Arctic countries and in adjacent northern alpine areas. INTERACT member stations annually host thousands of researchers from around the world and is seen as a major terrestrial research infrastructure network in the North with global recognition.

INPA offers the INTERACT Stations a long term sustainable platform to continue to play a major global role to build capacity for research and monitoring throughout the Arctic.

What you can do

[Partner up with INPA](#)

[Support/Donate](#)

[Adopt](#)

[Join network if you are a station](#)



Mission

The purpose of INPA is to support the use and operational procedures of infrastructures in Arctic, sub-Arctic, boreal and alpine regions, to support research and scientific development in the field of climate change and environment, and to increase general awareness about these topics within the general public and among politicians and decision makers.

To achieve the purpose, the main objectives of INPA are to improve international cooperation, to coordinate resources and research initiatives, to provide access to members' infrastructures, to improve infrastructures' operation and to financially support research and monitoring focusing on the Arctic, sub-Arctic, boreal and alpine areas and its global implications.



Station Management

INPA brings together managers of arctic, northern boreal and alpine research stations to improve station management and improve the services offered to the scientific community.

Managing stations



Management &
Operations



Research Infrastructure
Networks



Scientific Community
Networks



INTERACT GIS & Other
Tools

Science & Fieldwork

INPA and its member stations facilitate implementation of research and monitoring. INPA stations are platforms for implementation of research projects and long-term monitoring contributing to international scientific networks and organisations.

Accessing the Arctic



INPA Transnational and Remote Access



Virtual Access & INTERACT Data Portal



Arctic Fieldwork Permits and Regulations



Guidebooks, Instructions and Best Practices

Education & Training

INTERACT network develops outreach, education and training materials on Arctic ecosystems, biodiversity and changes affecting the region for a wide array of stakeholders, including the educational sector from primary schools to Universities, and the general public and decision makers on local, national, arctic and global levels.

Raising Awareness

Interactive books

Online lessons

Educational toolkits

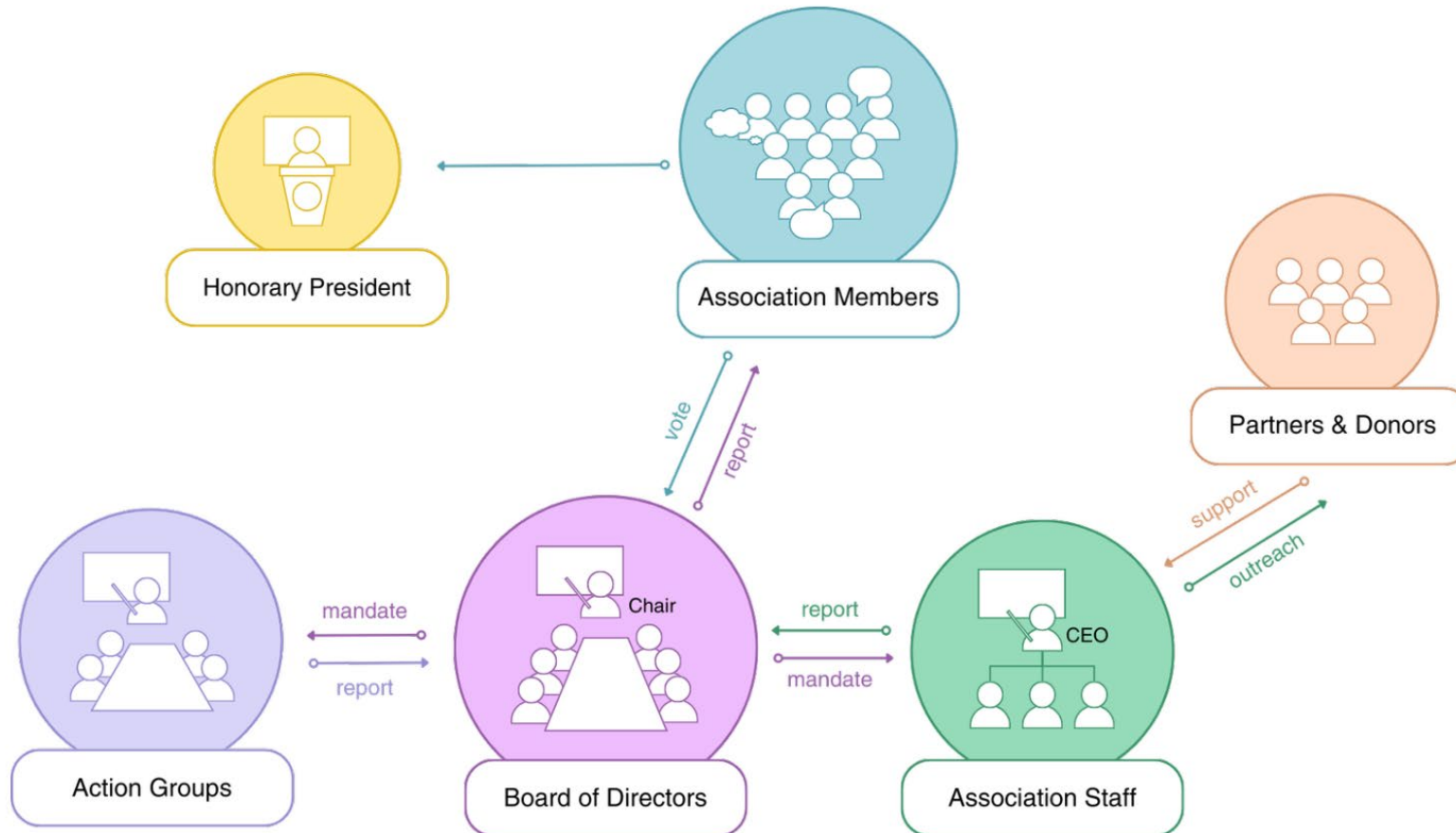
Books & Publications

Films & Docs

[Narrator] With a rapidly changing climate,

ARCTIC CIRCLE

How we work



Staff
CEO
+ 3 staff

Contracted activities

- Arctic Passion (EU)
- eRimote (EU)
- POLARIN (EU)
- Aquarious (EU)

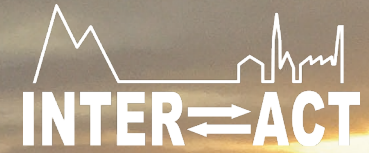
Open for Collaborations

- Get INTERACT as a partner
 - Our Stations
 - Our Expertise
 - Our Tools
- Support/Donate
- Adopt

INTERACT non-profit association is

Open for partnerships

- Let's INTERACT



www.eu-interact.org

www.interactassociation.org

