

Iceland country update 2025

FARO annual meeting March 20, 2025

Anna H. Ólafsdóttir



Image Guðmundur Bjarnason

General update:



Marine and Freshwater Research Institute (MFRI) received new research vessel on March 8th 2025

R/V Þórunn Þórðardóttir



Overview of planned vessels/icebreaker capacity:

Marine and Freshwater Research Institute (MFRI) has two oceanographic and fisheries research vessels. Iceland has no icebreakers.

MFRI offers both vessels for rent and berets on scheduled research surveys.

R/V Þórunn Þórðardóttir, 70 m - 32 berets



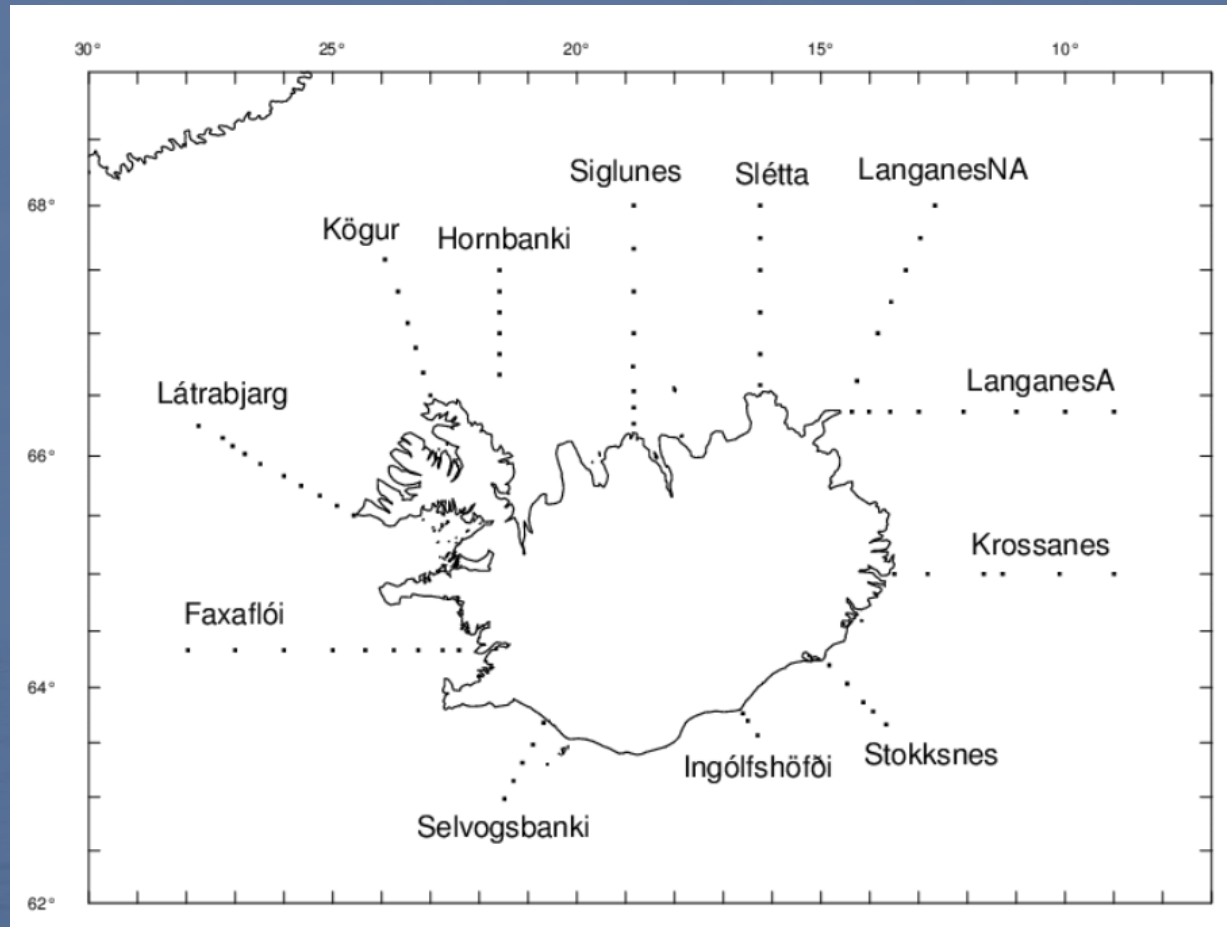
Árni Friðriksson, 70 m - 32 berets



[Eurofleets+ \(H2020\)](#) [POLARIN \(Horizon Europe\)](#) [AQUARIUS \(Horizon Europe\)](#)
Vessel fact sheets at <https://www.hafogvatn.is/en/about/research-vessels>

MFRI RV research surveys: 14-18 surveys per year

Oceanographic surveys:
static transect and stations
within Icelandic exclusive economic zone in
winter, spring and fall



MFRI RV research surveys: 14-18 surveys per year

Fisheries research surveys all year around:

Bottom trawl and benthic surveys
in shelf areas

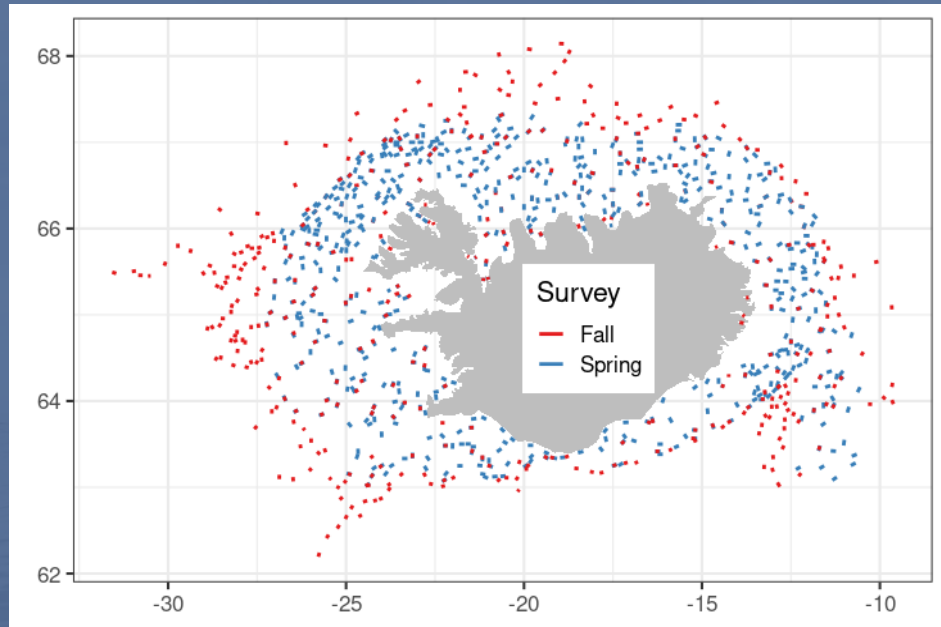


Image: MFRI

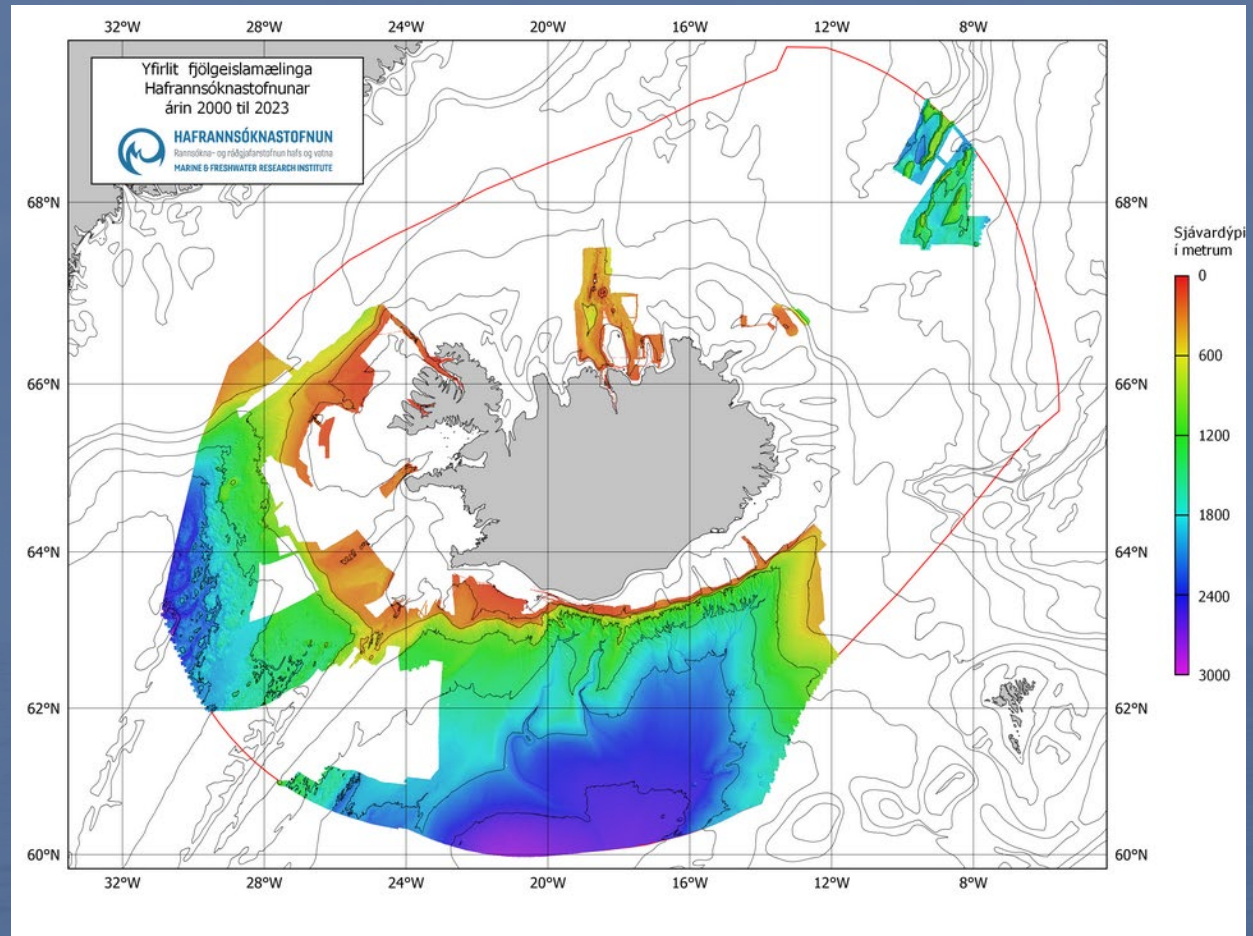
Pelagic fish acoustics and trawl surveys
on the shelf and offshore areas



Image: Wikipedia.org

MFRI RV research surveys: 14-18 surveys per year

Mapping of the ocean
sea floor in summer



MFRI RV research surveys: 14-18 surveys per year

To rent vessel contact: Guðmundur Bergþórsson, MFRI financial manager at gudmundur.i.bergthorsson@hafogvatn.is

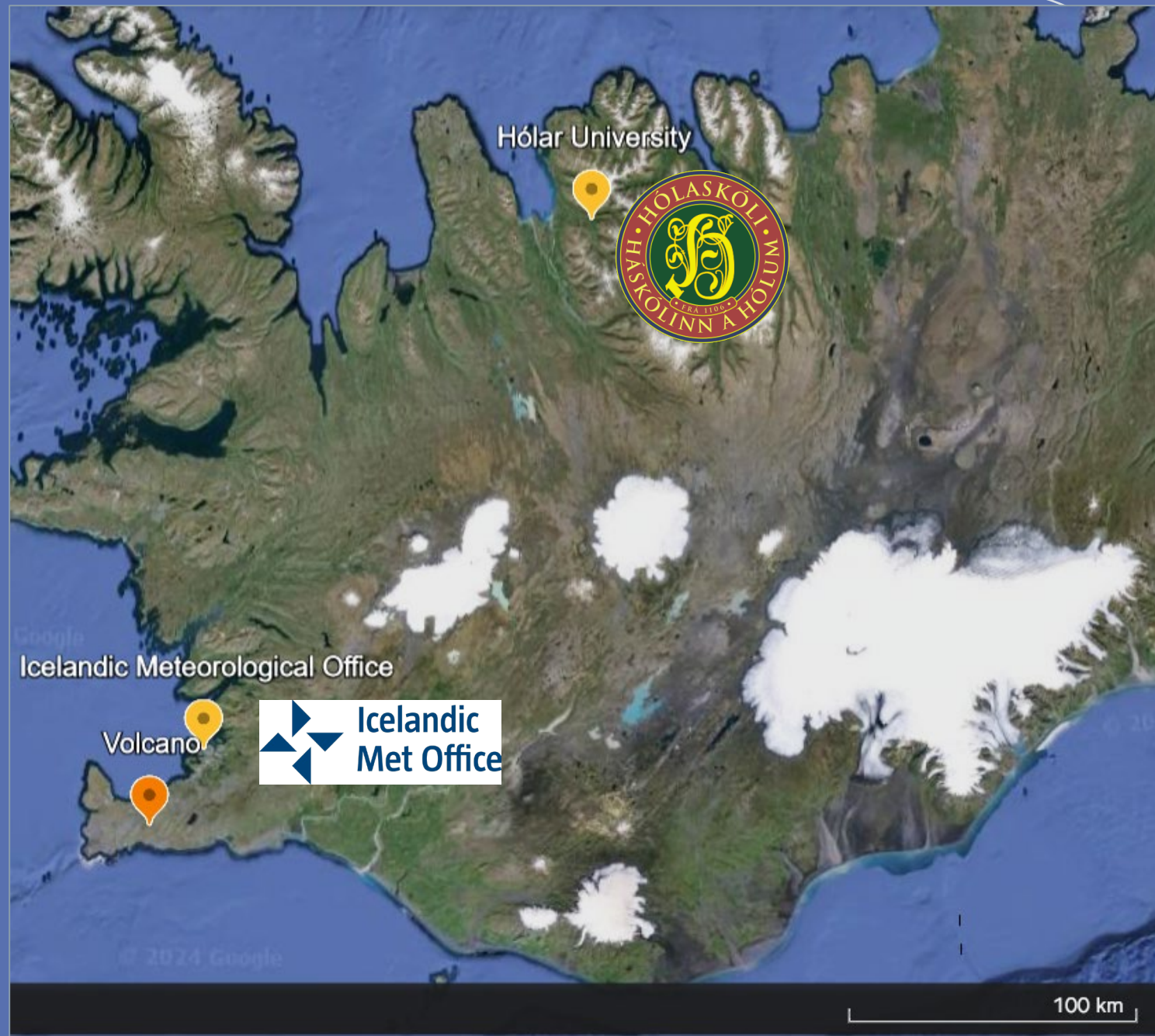
To join a MFRI survey contact me at anna.olafsdottir@hafogvatn.is



Update on modernizing infrastructures (*in terms of green transitions*):

2) Icelandic Met Office:
supercomputer centre for United Weather Centre West (green energy), incl. Denmark, Ireland, Netherlands.

3) Hólar University:
modernizing facilities for marine, freshwater and fish farming research. Final stages of funding, design work has not begun.



Thank you



Image Guðmundur Bjarnason