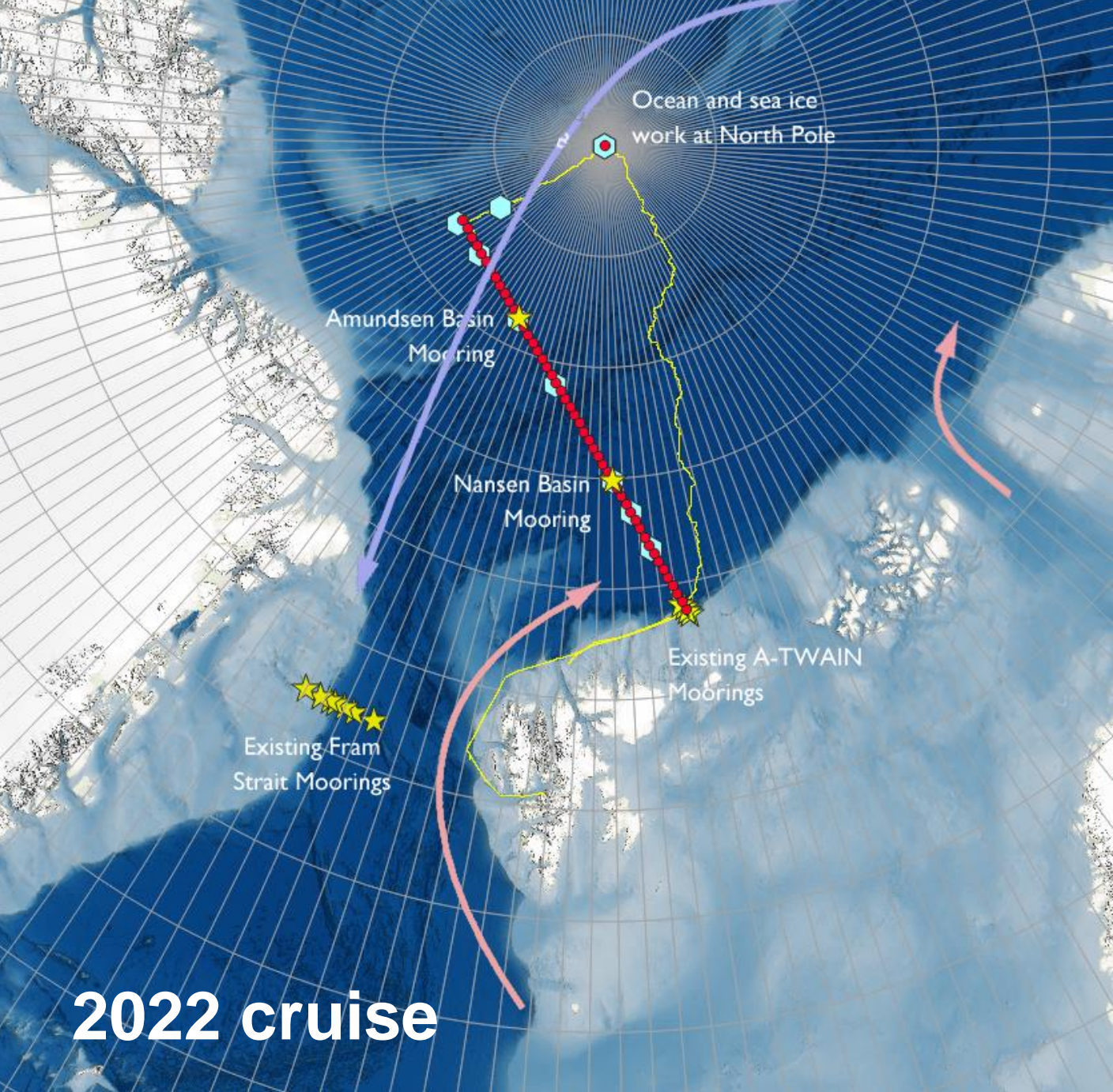


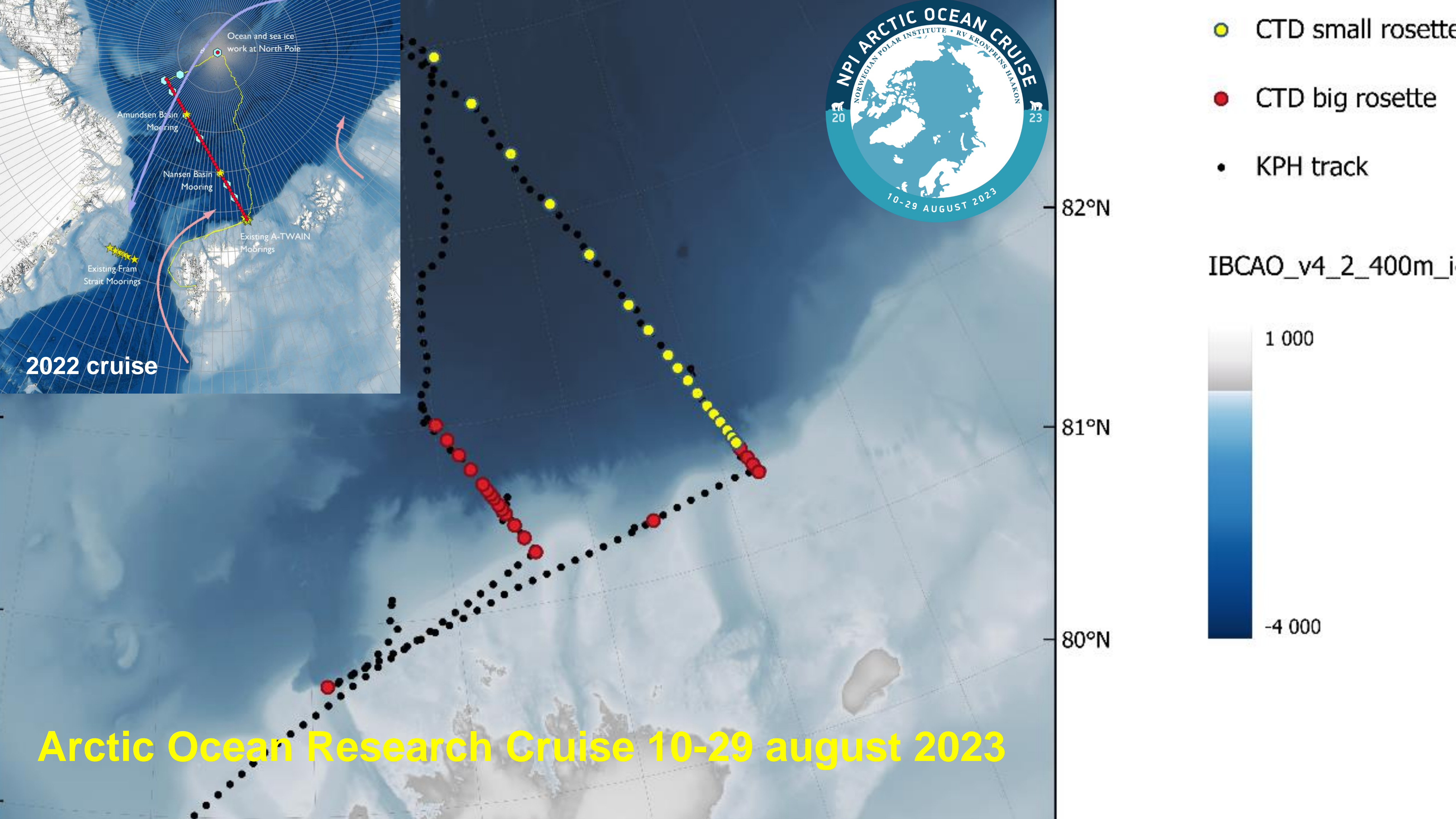
Selected Norwegian Arctic Activities



Nalan Koc
Special advisor external relations
Norwegian Polar Institute
Nalan.koc@npolar.no

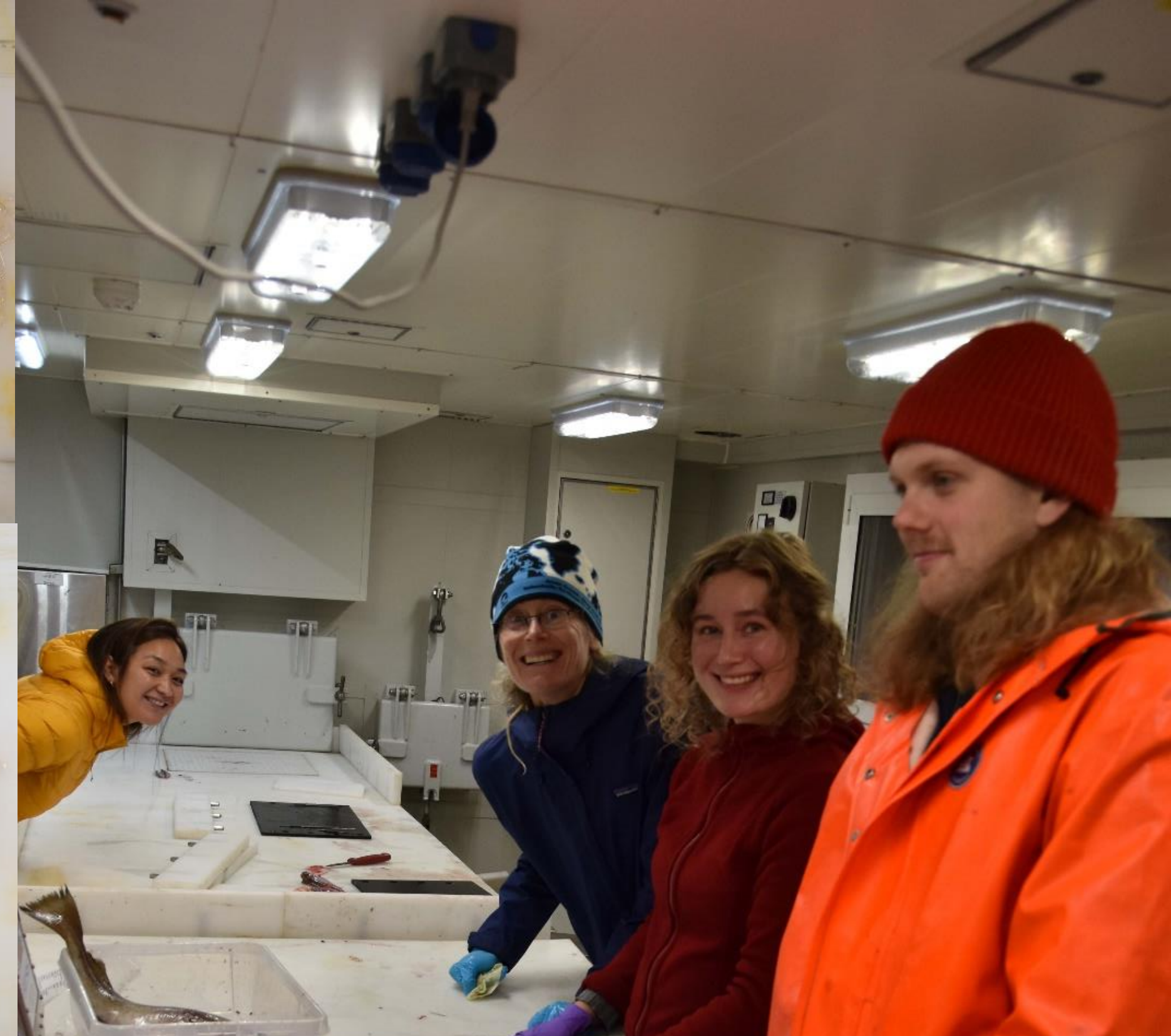


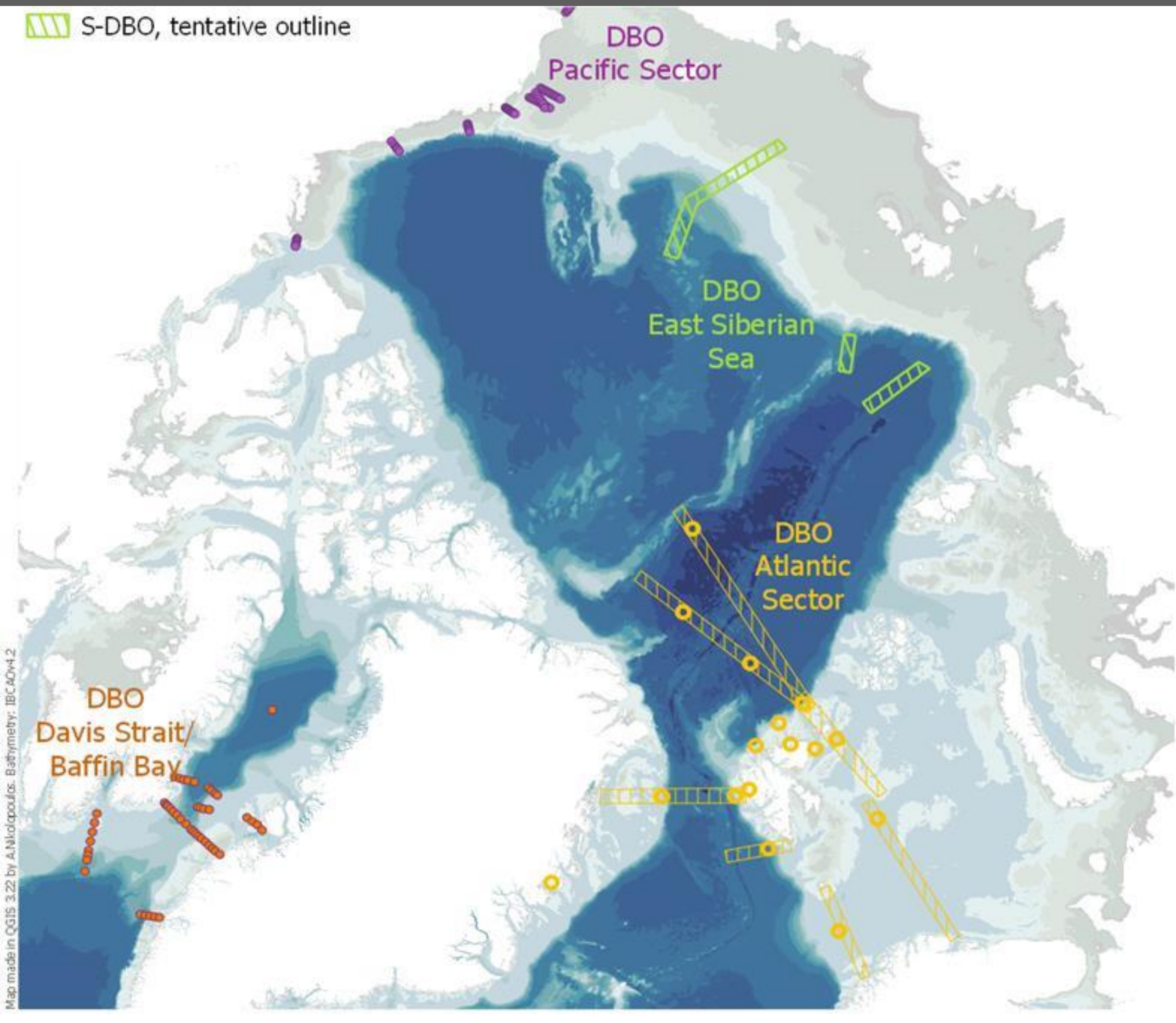
- CTD small rosette
- CTD big rosette
- KPH track



Arctic Ocean Research Cruise 10-29 august 2023

Arctic Ocean Cruise, August 2023





Distributed Biological Observatories - DBO

- Linking Physics & Biology
- Regional "hotspot" transect lines and stations located along a latitudinal gradient
- Will serve as a change detection array for the identification and consistent monitoring of biophysical responses

Atlantic DBO – NPI, IMR, AWI, IOPAN



Ny-Ålesund
Research Station
Norway

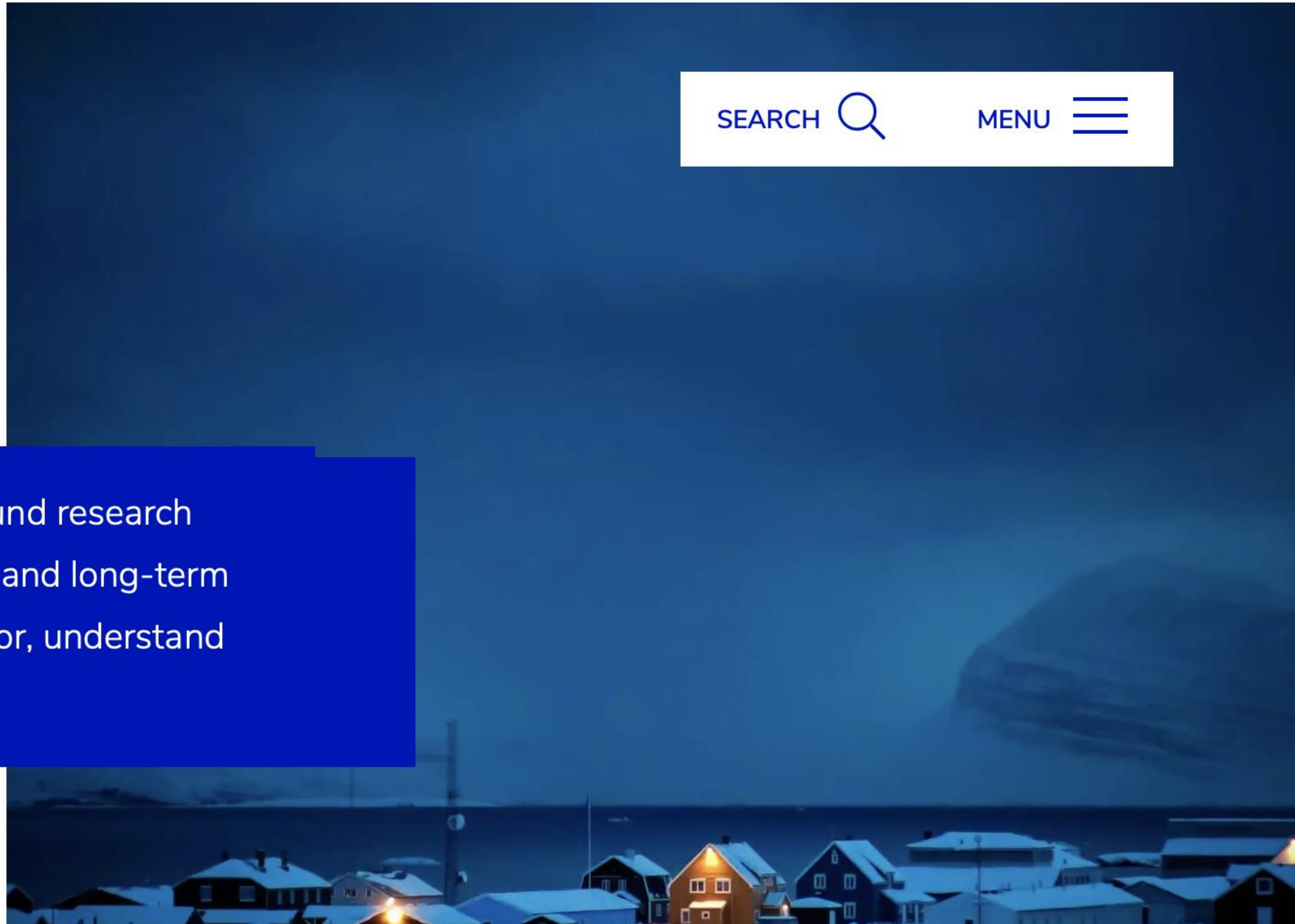


Ny-Ålesund
Research Station
Norway

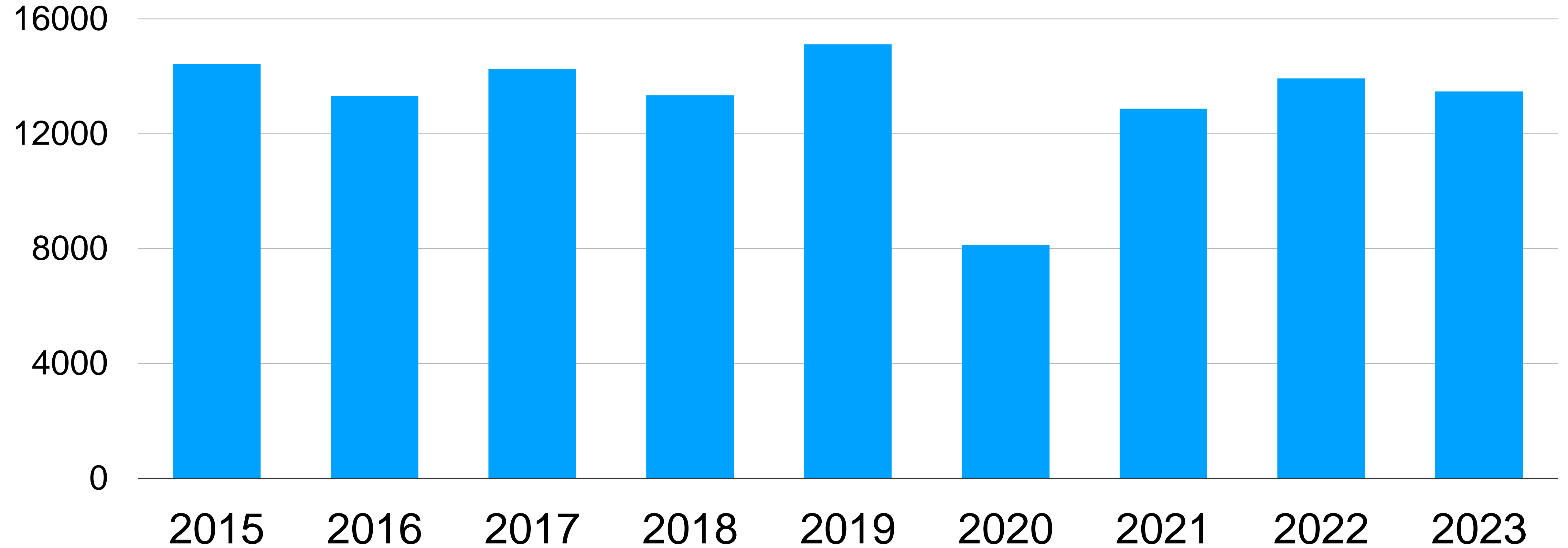
SEARCH 

MENU 

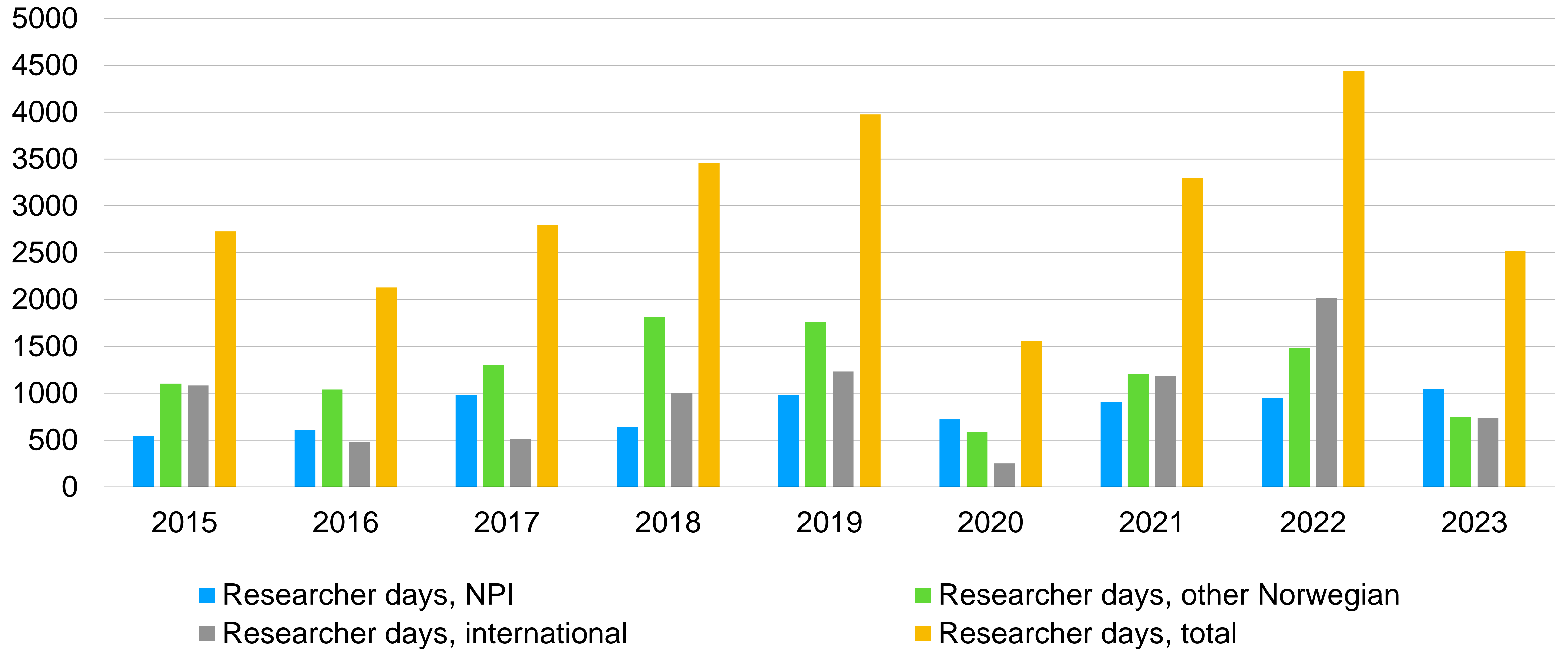
Ny-Ålesund is the world's northernmost year-round research station, facilitating and hosting research projects and long-term observation series. We make it possible to monitor, understand and explain Arctic systems and global changes.



Researcher days at Ny-Ålesund Research Station 2015 - 2023



Researchers hosted by the Norwegian Polar Institute at Ny-Ålesund Research Station 2015 - 2023



International Kongsfjorden Year

Year-round sampling during the International Kongsfjorden Year (summer 2024 to summer 2025)



Photo: Geir Gotaas, Norwegian Polar Institute





POLARIN

Network for polar research infrastructures



Funded by
the European Union

