

# Selected Norwegian Arctic Activities

Nalan Koc

Research Director

Norwegian Polar Institute



FARO Annual meeting 2022, March 26

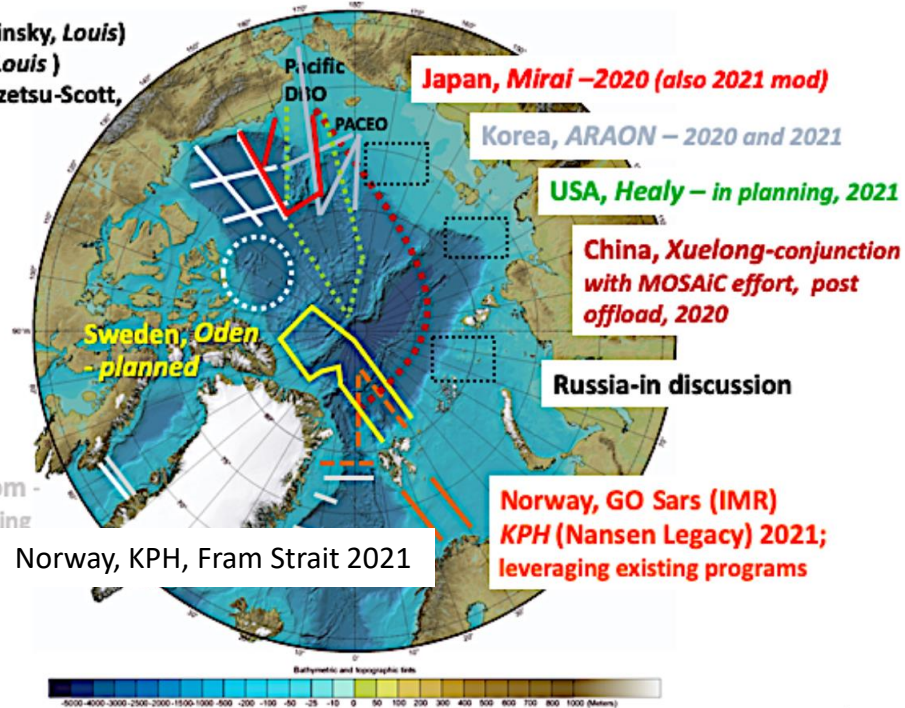
# Norwegian contribution to international «Synoptic Arctic Survey»



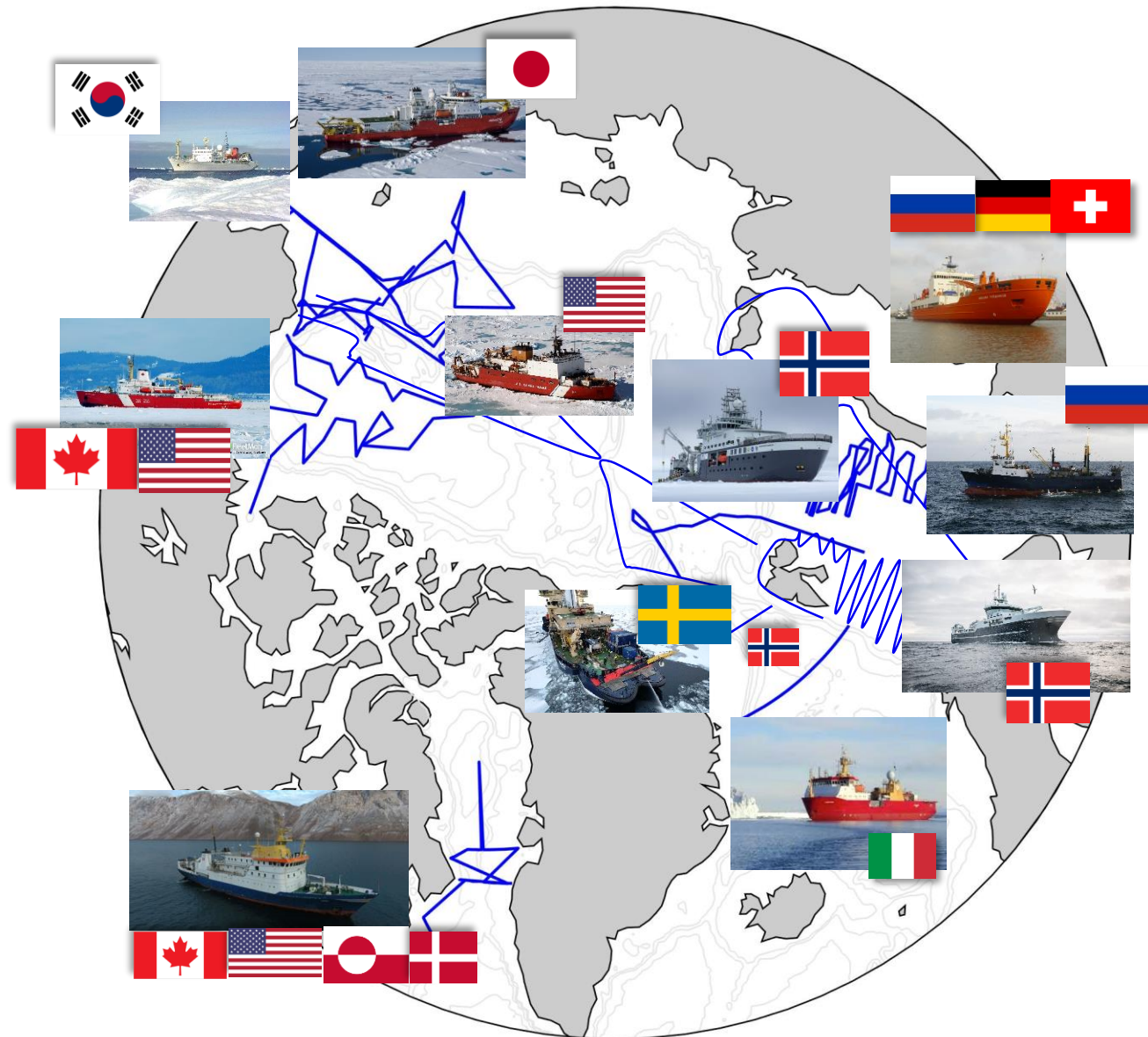
Result 2020-2021

## International cruise plan

Canada, USA (white lines) –  
collaborations, 2020 and 2021:  
JOIS/AON-BGOS  
(Williams/Proshutinsky, Louis)  
LIA-MPA (Michel, Louis)  
Davis Strait (Lee/Azetsu-Scott,  
Armstrong)



[modified B. Williams and J. Grebmeier, May 2019]



Synoptic Arctic *Survey*

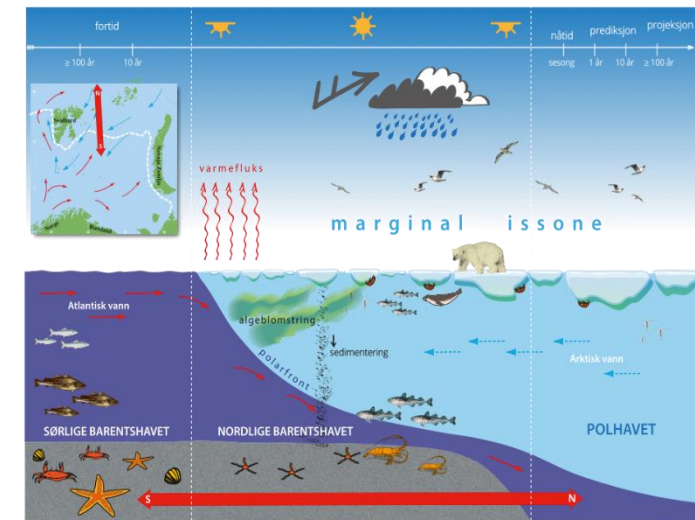
# the Nansen LEGACY



Funded by (2018-2023)



*The Nansen Legacy is the collective answer of the Norwegian research community to the outstanding changes witnessed in the Barents Sea and the Arctic as a whole.*



# Eight at one blow – The Nansen Legacy field campaigns in 2021



## Winter Process Cruise 2021

Barents Sea Polar Front  
Feb 9 – Mar 1



## Seasonal Cruise Q1

Barents Sea transect  
Mar 2 - 24



## Seasonal Cruise Q2

Barents Sea transect  
Apr 27 – May 20



## ARCTOS-Nansen Legacy Polar Front summer school cruise

Barents Sea Polar Front  
May 14 - 22



## Summer Joint Cruise 2-1

Barents Sea transect  
Jul 12 - 26



## Arctic Basin Joint Cruise 2-2

Nansen & Amundsen Basin  
Aug 24 – Sep 24



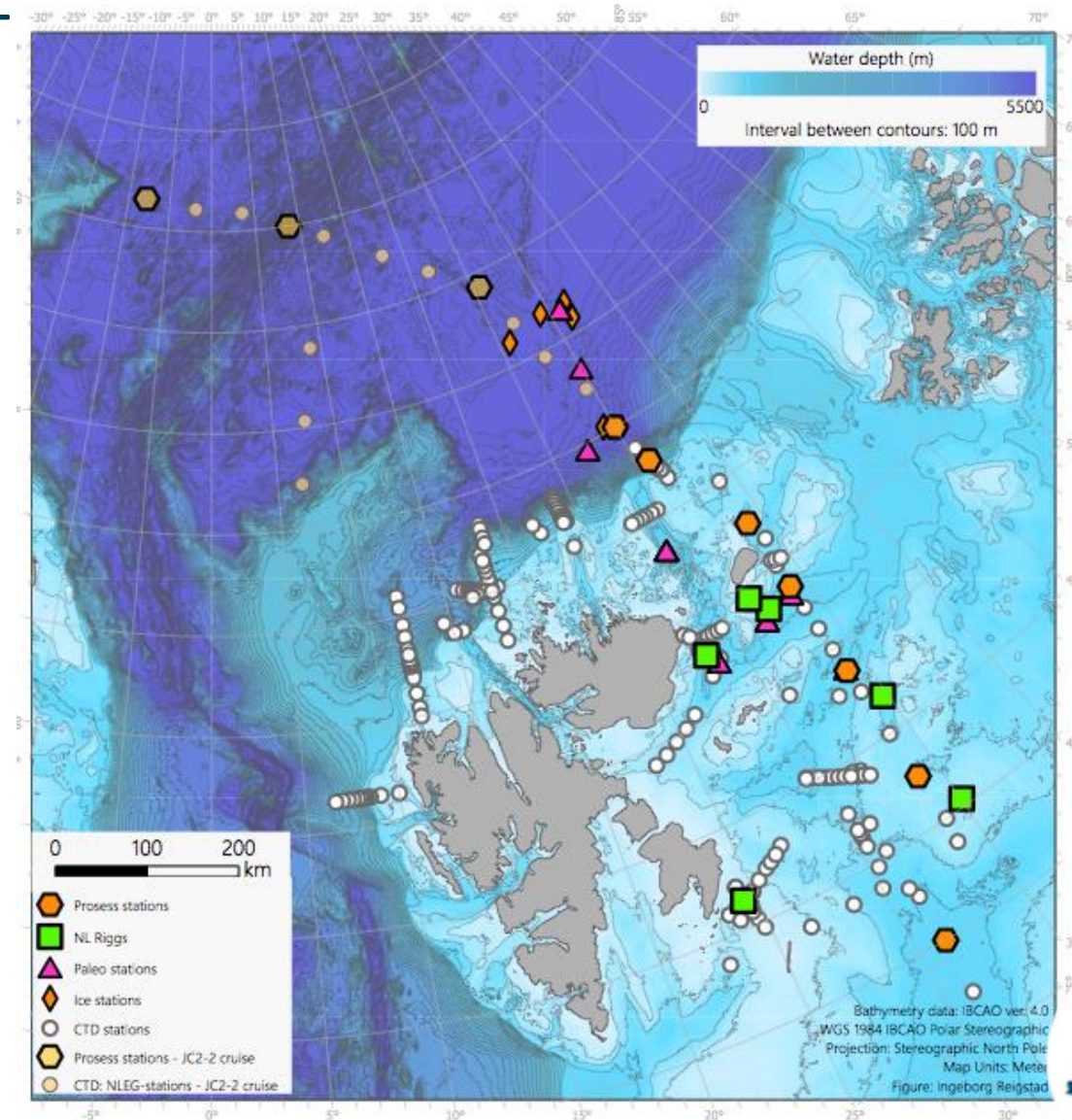
## Nansen Legacy / A-TWAIN Mooring Cruise

Northern Barents Sea  
Nov 6 - 16



## Mooring Cruise - Second Part

Central Barents Sea  
Dec 2 – 10





# The Nansen Legacy field campaigns in 2022



**Winter Cruise**  
Barents Sea transect  
Feb 19 – Mar 11



**Polar Front Studies**  
Barents Sea Polar Front  
Sep 28 – Oct 13



**Mooring Service Cruise**  
Northern Barents Sea  
Oct 3-13



**Polar cod-capelin connectivity**  
Barents Sea  
Nov 12-21



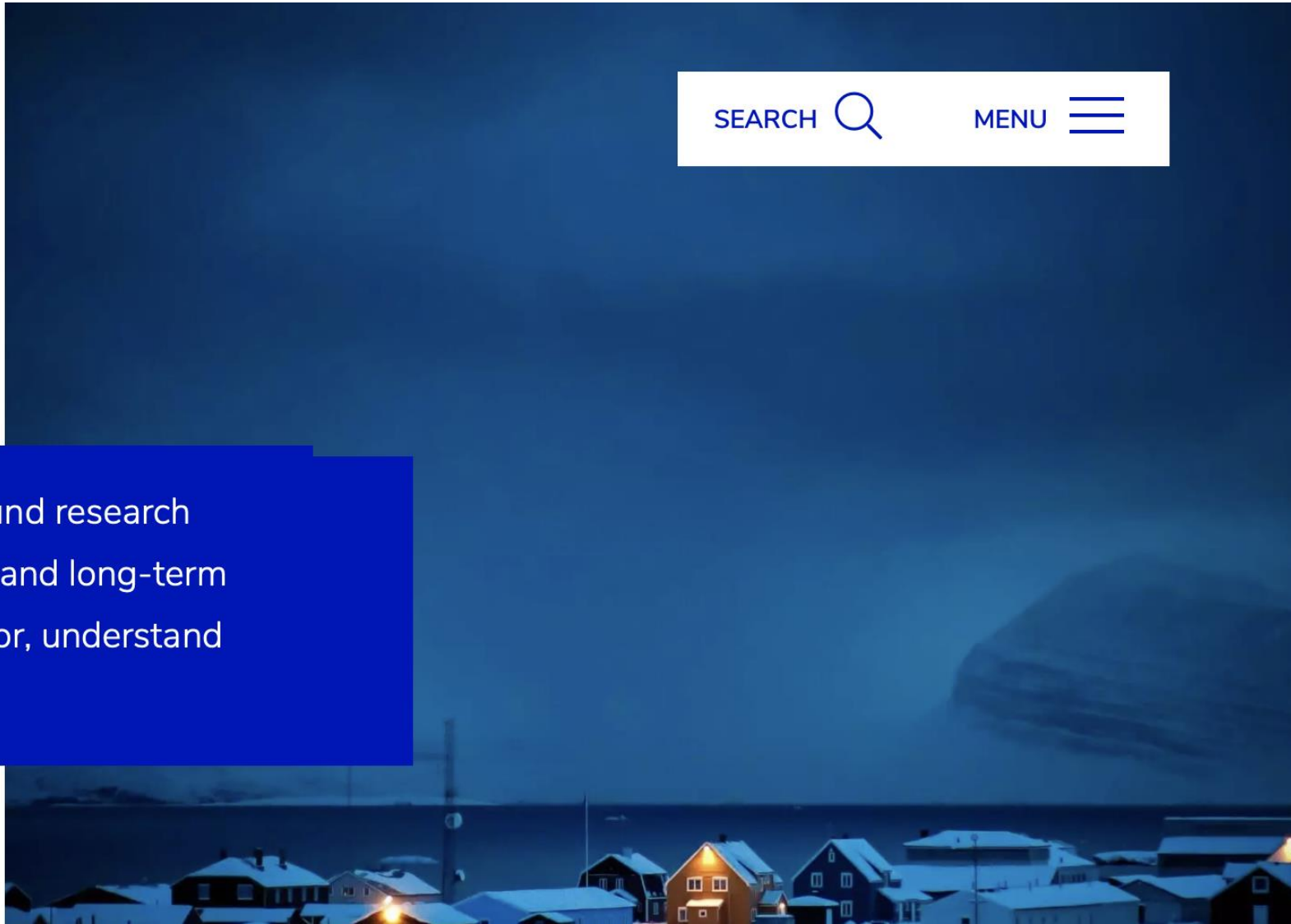


Ny-Ålesund  
Research Station  
Norway

SEARCH 

MENU 

Ny-Ålesund is the world's northernmost year-round research station, facilitating and hosting research projects and long-term observation series. We make it possible to monitor, understand and explain Arctic systems and global changes.





# Ny-Ålesund Research Station, 2021

## **NPI activity (researcher days)**

- Up 30 % from 2020 (720 days) to 2021 (934 days).(Permanent staff in Ny-Ålesund not included.)
- Relative proportion reduced from 46 % in 2020 to 28 % in 2021, primarily due to an increase in the number of research days by international researchers hosted by NPI

## **Corona impact on activity less pronounced in 2021 vs 2020**

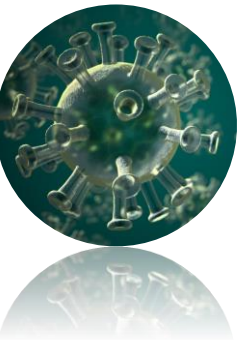
- Easing of restrictions
- Increased willingness by researchers to spend time in quarantine prior to travelling to Svalbard and Ny-Ålesund to carry out projects postponed from 2019 and 2020.





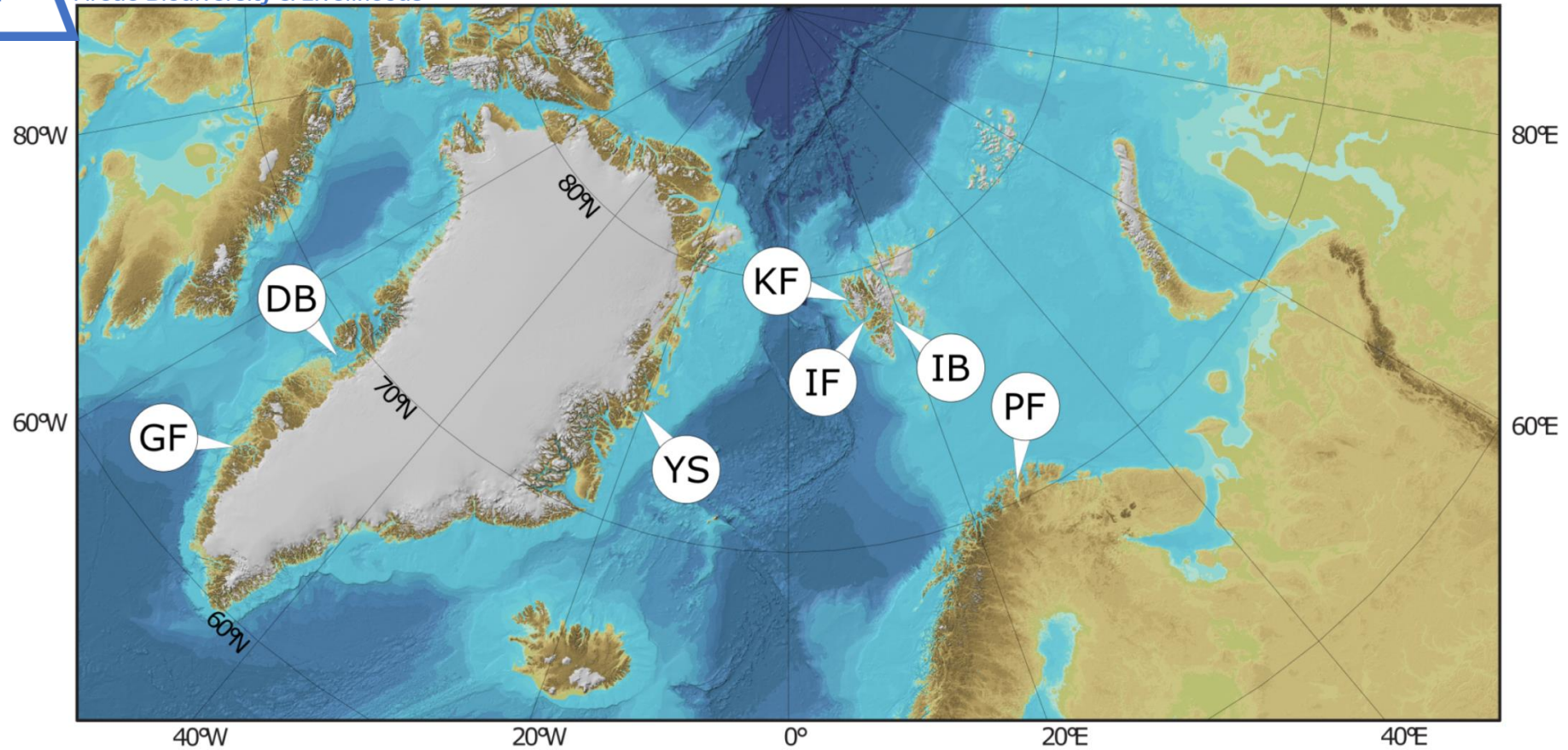
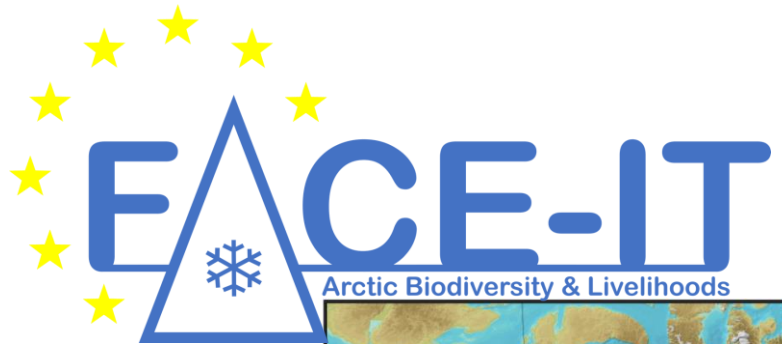
# Ny-Ålesund Research Station, Post-covid

- **Travel restrictions lifted**
  - Norwegian mainland and Svalbard
- **Activity moving towards a normal situation**
  - Research and environmental monitoring
  - Official visits
  - Activity by Asian institutions still at a lower level than pre-covid





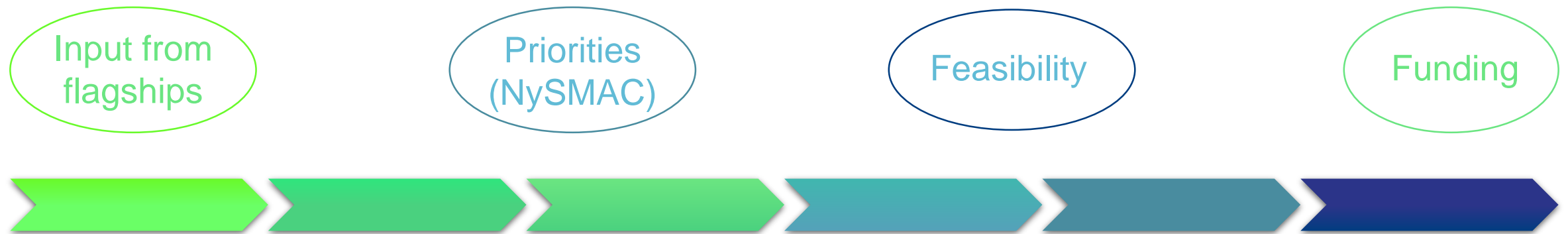
Ny-Ålesund  
Research Station  
Norway



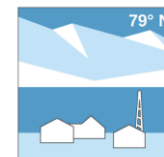
<https://www.face-it-project.eu>



# Long term infrastructure plan



Revised as/when needed



**Thank you!**

