

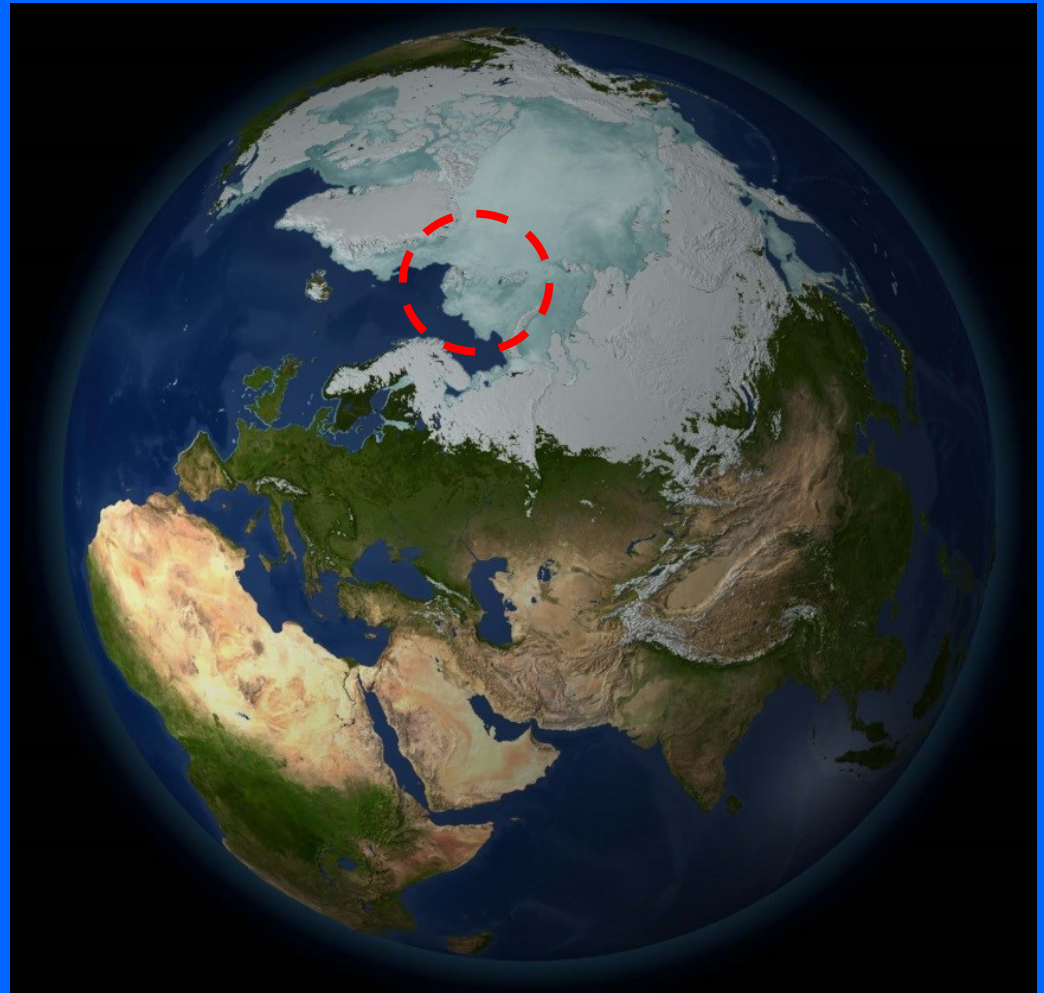
COMMITTEE ON POLAR RESEARCH
POLISH ACADEMY OF SCIENCES



Piotr GŁOWACKI
Associate Professor



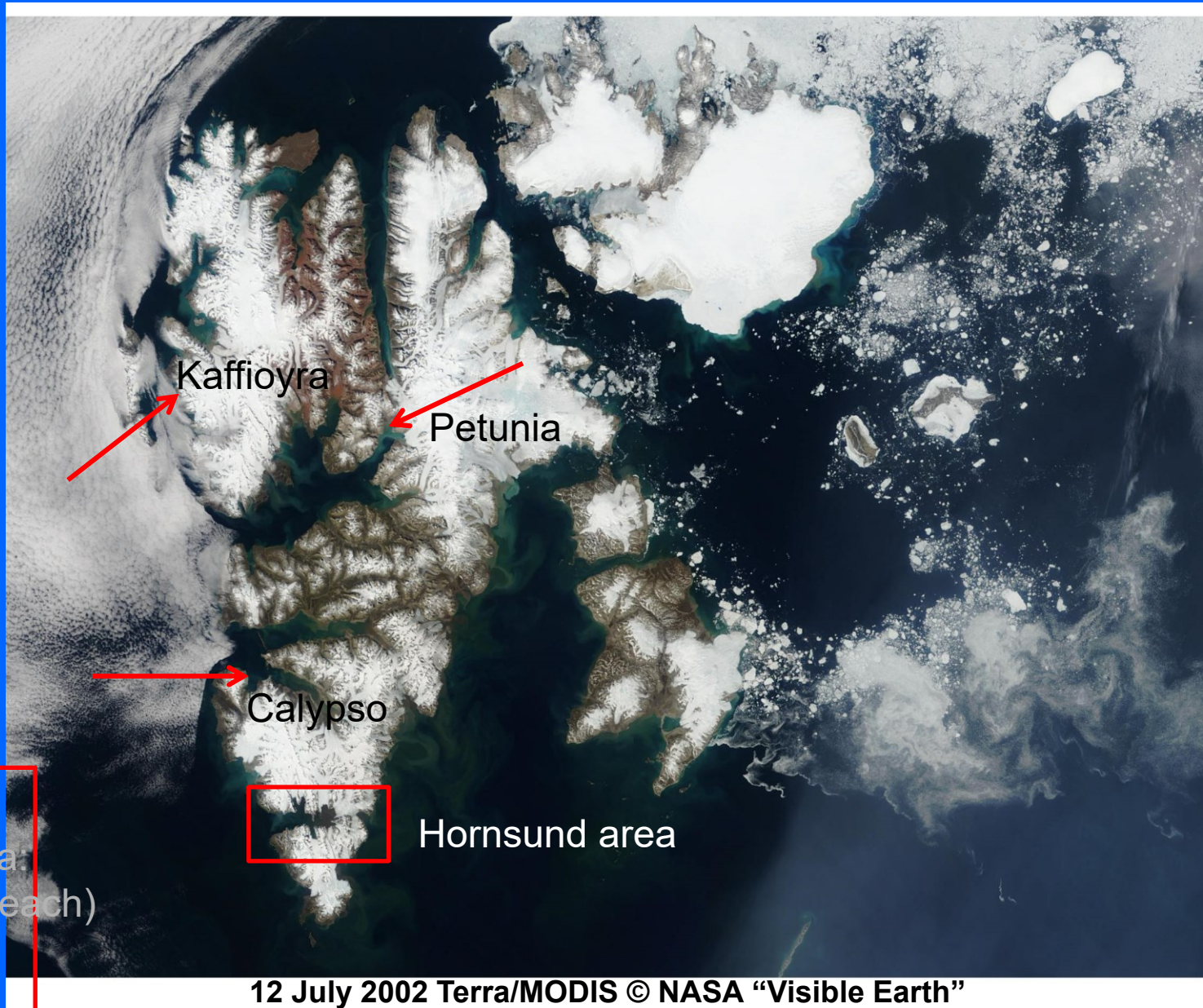
POLISH POLAR
CONSORTIUM



Polish activity in Svalbard – Report from 2016 –

ASSW – FARO Meeting, Prague, Czech Republik, 1 April 2017

Polish activity at Svalbard in 2016



Polish camp activity in Hornsund area in 2016

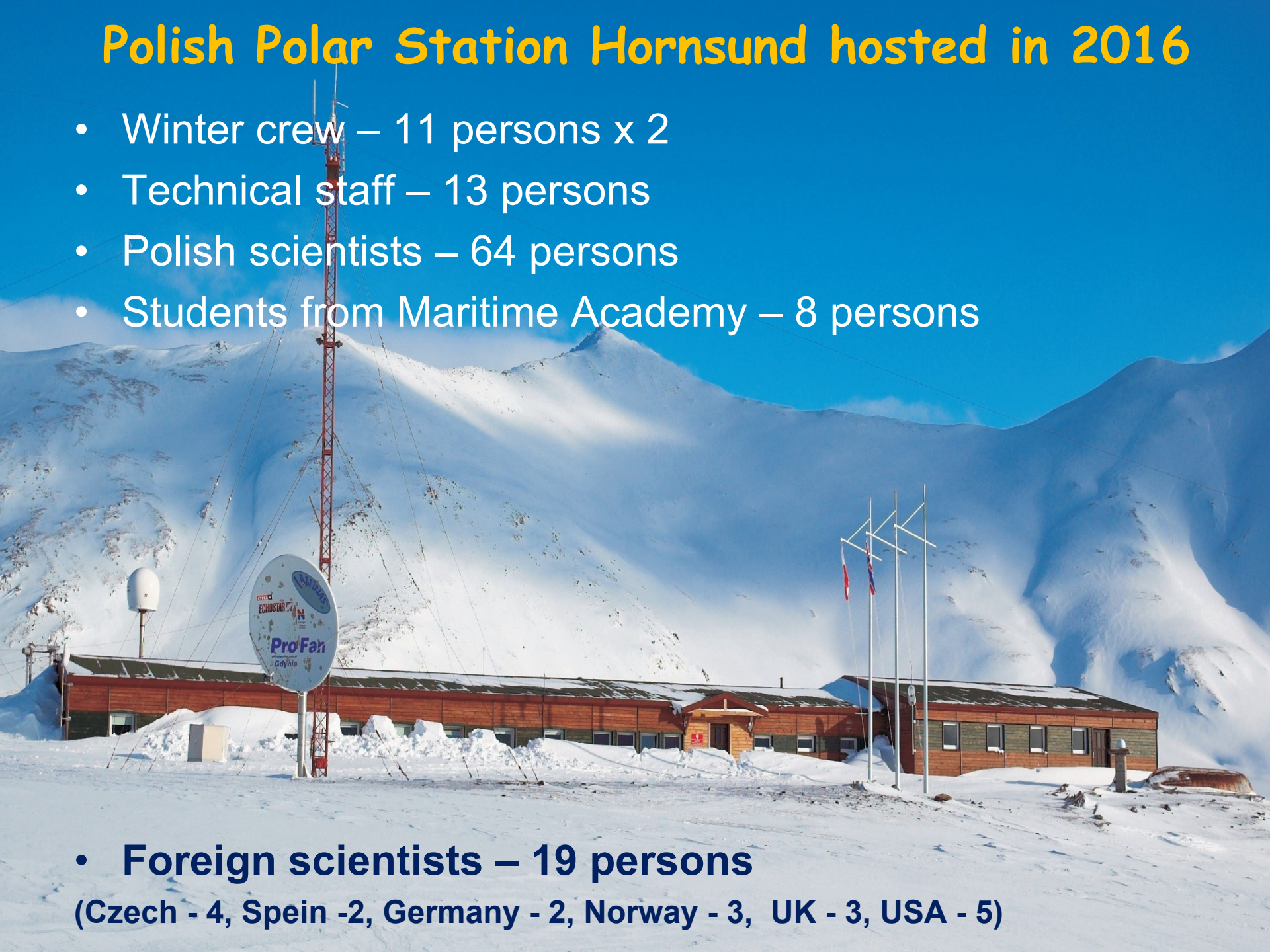


12 July 2002 Terra/MODIS © NASA "Visible Earth"

Polish Polar Station Hornsund hosted in 2016

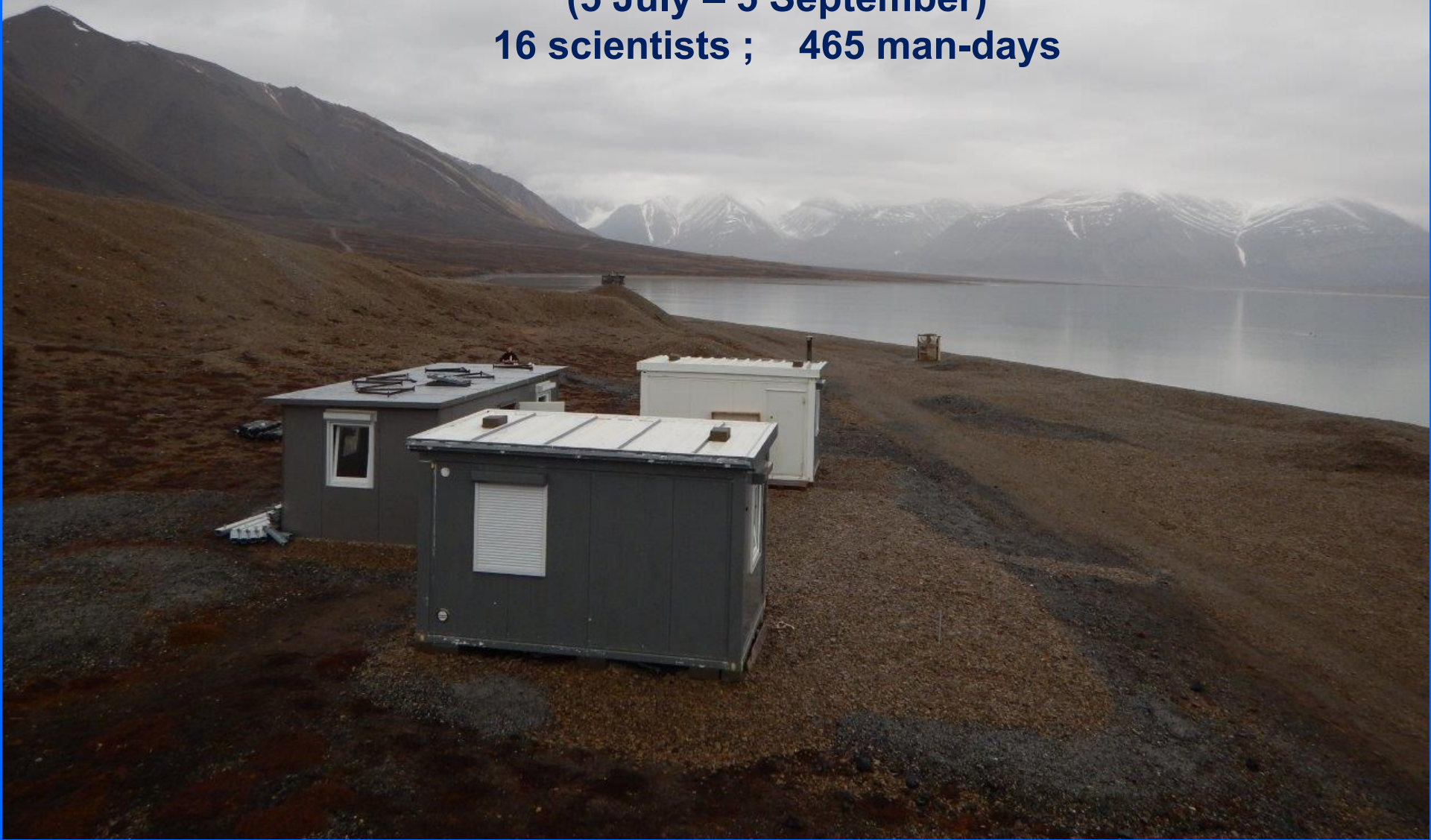
- Winter crew – 11 persons x 2
- Technical staff – 13 persons
- Polish scientists – 64 persons
- Students from Maritime Academy – 8 persons

- **Foreign scientists – 19 persons**
(Czech - 4, Spain - 2, Germany - 2, Norway - 3, UK - 3, USA - 5)



**Seasonal station in Petuniabukta
owner: Adam Mickiewicz University in Poznan**

**(5 July – 5 September)
16 scientists ; 465 man-days**



Seasonal station at Kaffiøyra (Oscar II Land)

owner: Nicolaus Copernicus University in Torun

(15 – 24 April) and (5 July – 8 September)
16 scientists; 438 man-days



Seasonal station *BARANOWKA* (Wedel Jarlsberg Land)

owner: University of Wroclaw

(4 July – 6 September)

3 scientists; 130 man-days

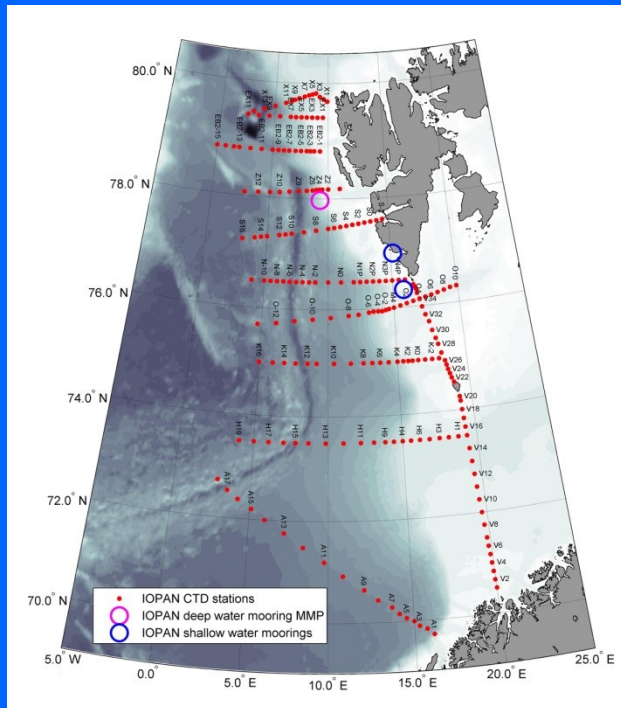


s/y OCEANIA

AREX 2016

(22 June - 14 August)

Crew 14 persons + 14 scientists
Exchange ca 40 scientists from
Poland and Germany
(700 person days)



Scientific - training vessel *Horyzont II* on Svalbard in 2016



First trip (26 June – 18 July)

16 crew

20 students

64 members from expeditions

Secound trip (11 September - 5 Oktober)

16 crew

20 students

45 members from expedition

EDU-ARTIC (2016 – 2019)

„Innovative educational program attracting young people to natural sciences and polar research”

Grant supported by: Horizon 2020

Coordinator: Institute of Geophysics PAS

Partners:

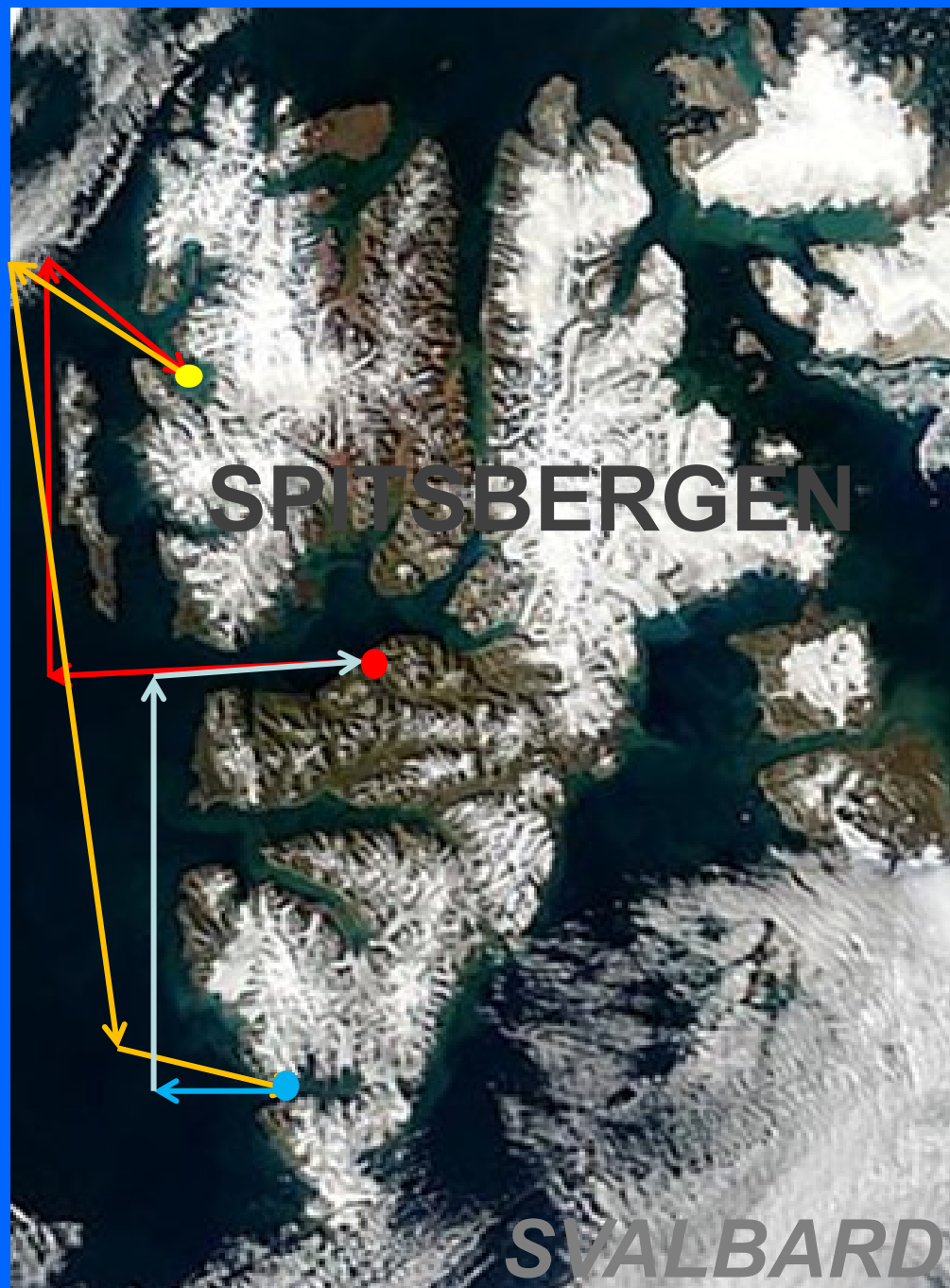
- American Systems Ltd. As. (Poland)
- Norwegian Institute of Bioeconomy Research – NIBIO (Norway)
- JARDFEINGI – Geoinformation Department (Faroe Islands)
- Universite de Versailles Saint-Quentin-en-Yvelines (France)
- NORDURSLODAGATTIN EHF – Arctic Portal (Iceland)

full info on: <http://edu-arctic.eu>

**EDU-ARCTIC Workshop
Spitsbergen routes
16-19 September 2016**

**24 participants from:
Norway,
France
Iceland
Faroe Islands
Poland**

- Longyearbyen
Arrive 16 September
Departure 19 September
- Ny-Alesund
17 September
- Hornsund
18 September



National Polish Roadmap for Research Infrastructures at Svalbard

Special support to investment plan for 2015-2016:

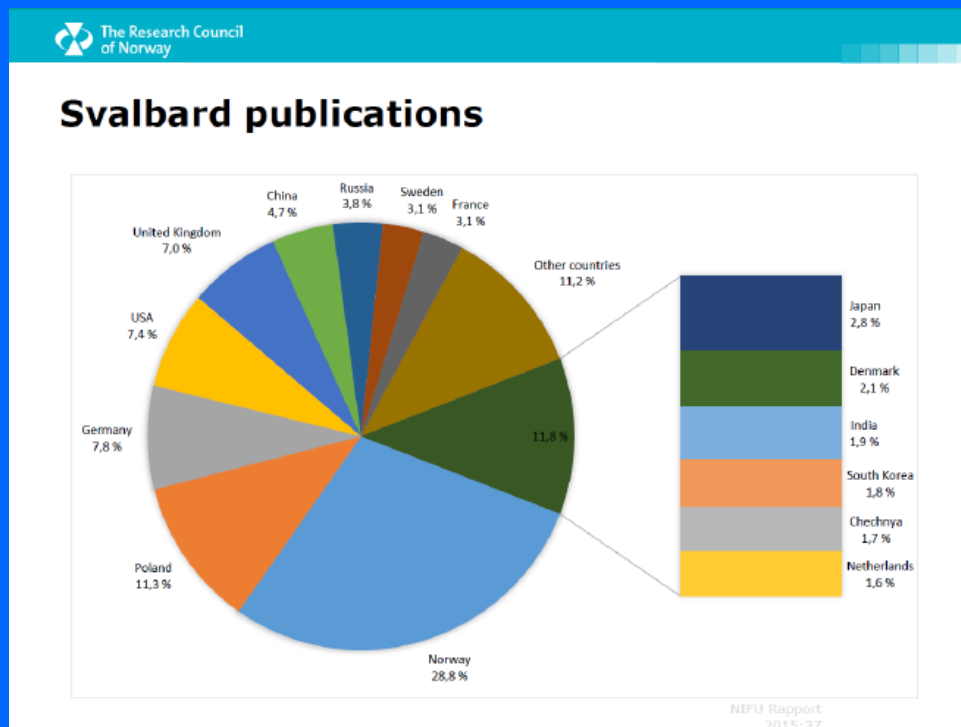
HYDRA – instrumentation for comprehensive research and monitoring of glacio-marine basins and changes of the coastal zone in polar regions.
(600 k€)

CRYODYN – instrumentation for comprehensive research on the structure and dynamics of the cryosphere and polar catchments.
(500 k€)

CLIMEV – instrumentation for studying the dynamics of changes in the atmosphere in the polar regions.
(400 k€)

Scientific results of Polish Activity at Svalbard

Type	2008	2009	2010	2011	2012	2013	2014	2015	2016
Papers	133	118	56	100	89	92	86	134	163
- in JCI journals	48	56	34	44	47	44	58	84	116
Presentation at conferences	91	76	109	92	161	87	105	146	161
Grants	17	32	26	24	34	39	35	41	44
Habilitation	2	0	3	0	2	0	2	1	1
Doctors defense	4	3	2	5	5	5	5	1	3
Master degree	8	3	3	6	13	9	12	19	24



Thank you for your attention



phot. Adam Nawrot