

**SWISS POLAR  
INSTITUTE**

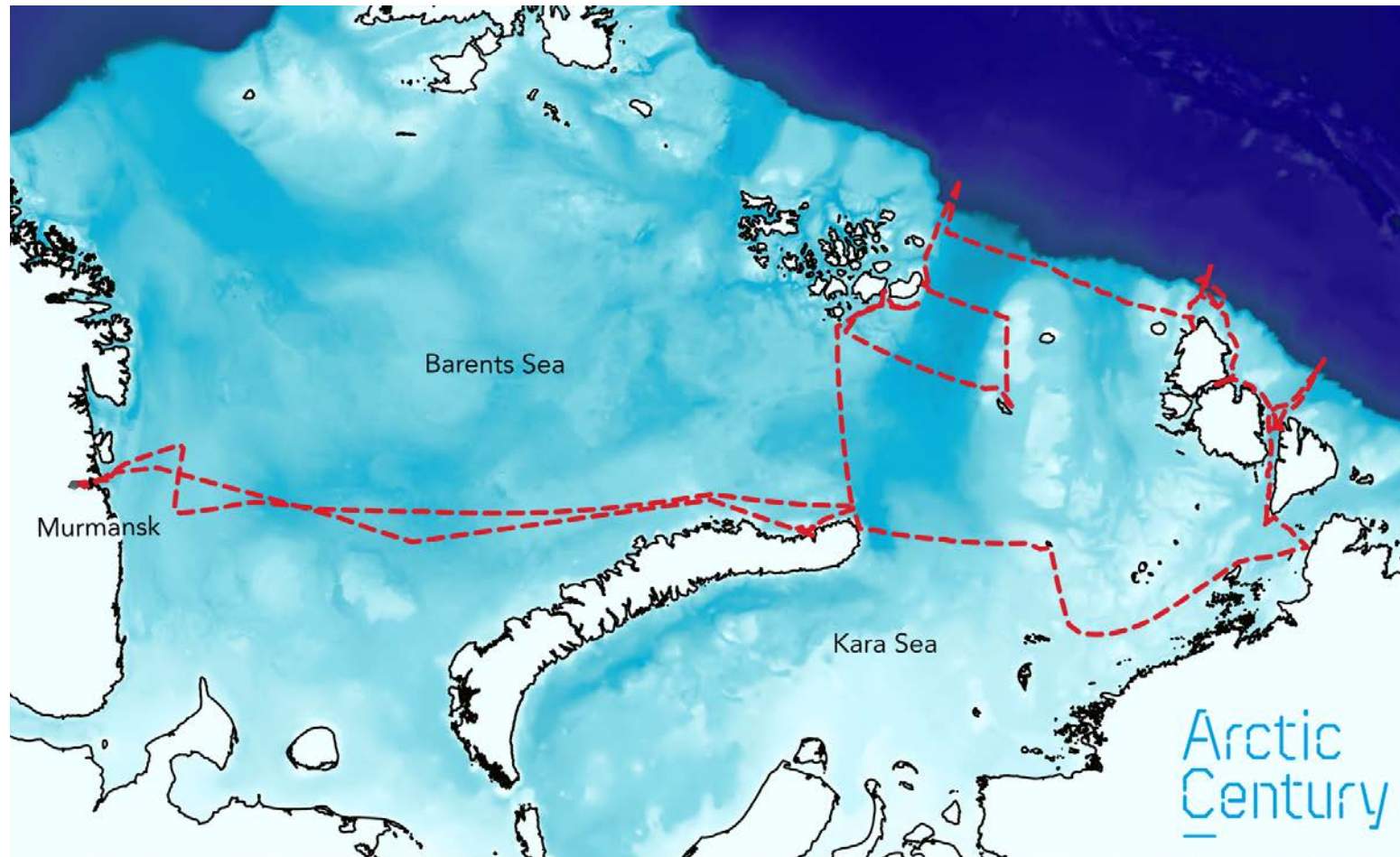


# 2021 REPORT FROM SPI

- Arctic Century Expedition 2021
- Launch of new polar programmes – SPI Flagships
- Other news from 2021



# Arctic Century Expedition 2021



# Arctic Century Expedition 2021

- 5 August – 6 September 2021
- Organised by GEOMAR, AARI and SPI – Expedition funded by Swiss Polar Foundation
- 59 scientists from 15 different institutions and 17 nationalities
- Total of stations: 125 of which 116 stations were marine stations and 9 terrestrial stations collecting over 10'000 samples and over 7'000 instrument hours performing atmospheric measurements, ice cores, ...
- <https://swisspolar.ch/expeditions/arctic-century-expedition/>

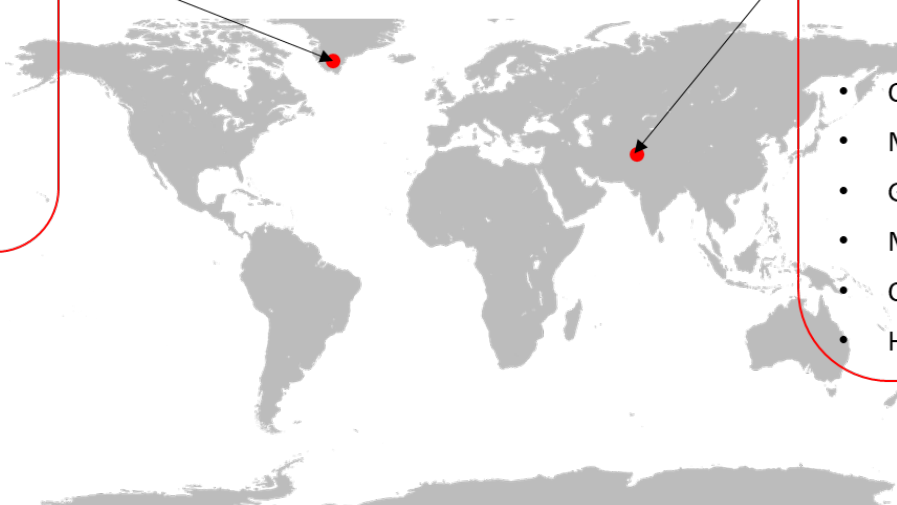


## SPI Flagship Initiatives – new Swiss polar programmes

- CHF 1.5 mio funding towards establishing a temporary research infrastructure in study region – Swiss polar Flagship programmes
- Interdisciplinary collaboration and international embedding central

**GreenFjord:**  
Greenlandic Fjord ecosystems in a changing climate  
*Narsarsuaq, Greenland*  
*EPFL, UniL, ETH, WSL, UZH*

- Atmosphere
- Cryosphere
- Ocean
- Biodiversity
- Land
- Human



**PAMIR:**  
Towards an interdisciplinary understanding of climate change impacts on the third pole  
*Pamir Mountains*  
*EPFL, UniBe, ETH, WSL, UniFr, PSI, UZH, UniGe*

- Climate & environmental history
- Mountain permafrost
- Glaciers, snow & hydrology
- Mountain biogeochemistry
- Cryospheric hazards
- History of glacier science

## More news from 2021

- **Bilateral collaboration**, in particular Koni Steffen workshop and grants with GL
- In 2021, SPI supported 27 **projects** (open projects on 31.12.2021), of which 18 with a focus in the Arctic. 12 of these projects carried out fieldwork in 2021, 3 postponed their campaigns because of COVID and 3 (technology) projects carried out testing in the Alps instead of Arctic
- **COVID impact**: flexibility by funders, communication in and around projects, agility and quicker turn-around times for scientists, increased risk-management awareness, sharing data, sharing resources (e.g. maintenance), collaboration (local/international), Co2 awareness



**Thank you!**

