

OFFICE OF
POLAR PROGRAMS

USA Update to FARO 2025

Dr. Frank Rack
Dr. Jennifer Mercer

U.S. National Science Foundation
Geosciences Directorate (GEO)
Office of Polar Programs (OPP)

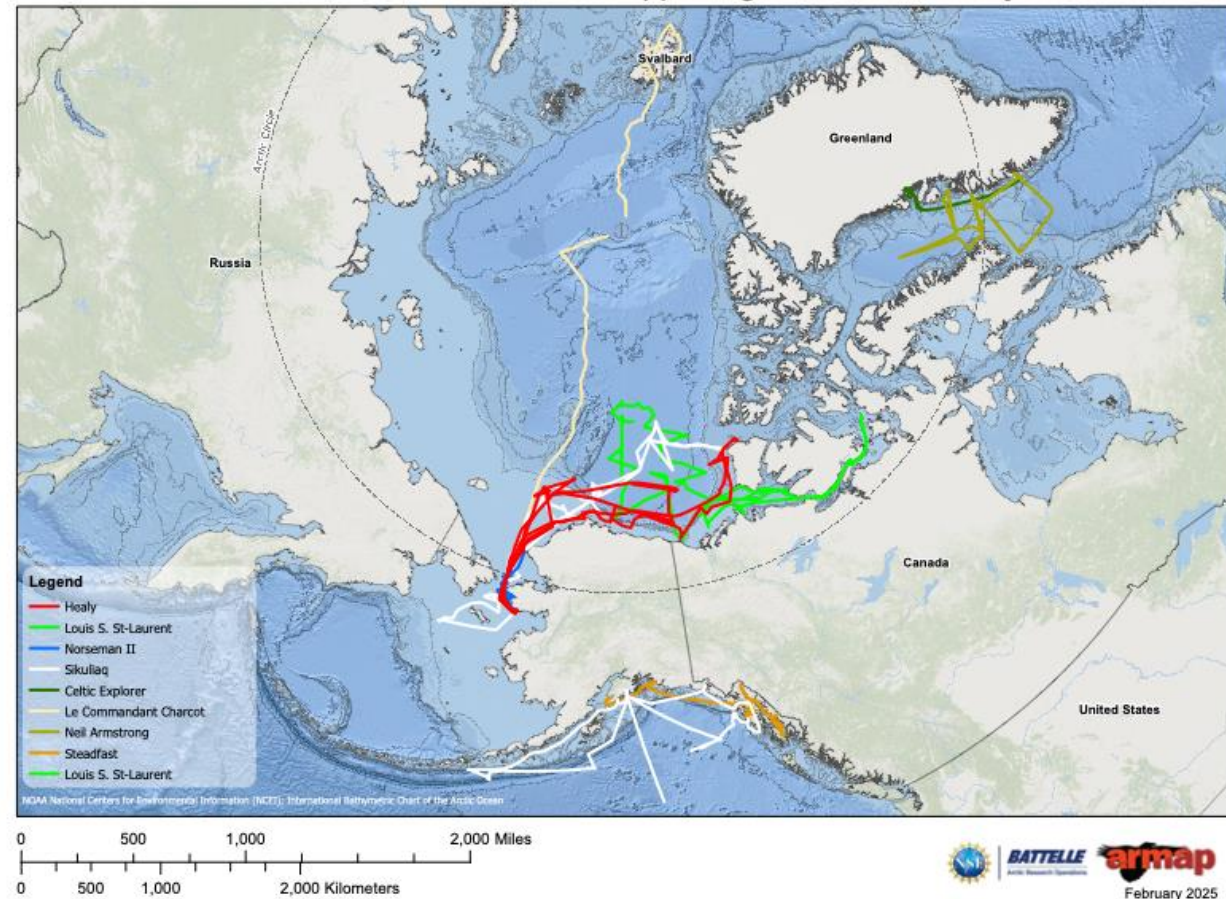


U.S. National Science Foundation
WHERE DISCOVERIES BEGIN

Vessel/Icebreaker Projects

- U.S. NSF supports annual ship time on icebreakers and on regional and coastal vessels (5-10 cruises per year)
- NOAA has Arctic projects this year on *Dyson*, and *Sikuliaq*, and assorted fisheries work on smaller vessels
- IARPC has a list of vessel movements from past Arctic field seasons online:
<https://www.iarpccollaborations.org/research-expeditions.html>

2024 Arctic Research Cruises Supporting NSF-Funded Projects



2025 Planned Vessel/Icebreaker Projects

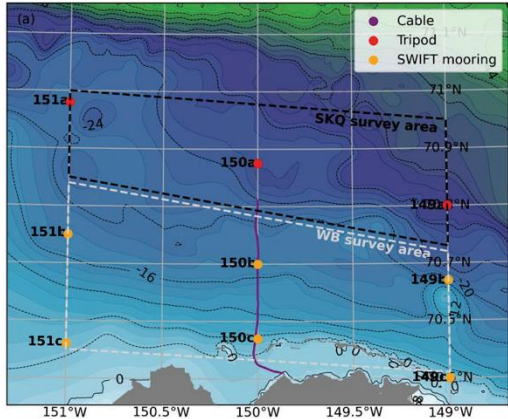
- **R/V Sikuliaq** – Alaska Coastal Cooperative Moorings – Chris Maio (PI, University of Alaska, Fairbanks): Bering Sea, July – August 2025 – Seward, AK to Nome, AK, [NSF].
- **R/V Sikuliaq** – DBO/EcoFOCI/AMBON-CEO – Jackie Grebmeier (PI, University of Maryland, Center for Environmental Science) and others: Chukchi Sea, August – September 2025 – Nome, AK to Kodiak, AK, [NOAA]
- **R/V Sikuliaq** – Arctic Coastal Freeze (wave interactions with landfast ice) – Madison Smith (PI, WHOI): Beaufort Sea, Offshore Northern Alaska, near Oliktok Point, October – November 2025 – Nome, AK to Dutch Harbor, AK [NSF].
- **USCGC Healy** – Nansen and Amundsen Basin Observational System (NABOS) – Igor Polyakov, Laura Whitmore (Co-PIs, University of Alaska, Fairbanks): East Siberian Sea, September - October 2025 - Kodiak, AK to Nome, AK, [NSF].
- **R/V Norseman II** – Bering Strait Moorings – Rebecca Woodgate (PI, University of Washington): Bering Strait, July 2025 – Nome, AK to Nome, AK, [NSF].

2025 Planned Vessel/Icebreaker Projects

- **CCGS Louis S. St-Laurent** (joint cruise with Department of Fisheries and Oceans, Canada) – Joint Ocean Ice Study/Beaufort Gyre Observing System (JOIS/BGOS) NSF-DFO cruise – Mary-Louise Timmermans (U.S. PI, Yale U): Beaufort Sea, August – September 2025, Cambridge Bay, Nunavut, Canada and return, [DFO and NSF].
- **CCGS Sir Wilfrid Laurier** (Department of Fisheries and Oceans, Canada) – NSF-DFO joint cruise related to the Distributed Biological Observatory (DBO) – Jackie Grebmeier (UMD-CES): Chukchi Sea, July 2025, Victoria, BC, Canada to Utqiagvik, AK, [DFO and NSF].
- **R/V Steadfast** – LeConte Glacier Fjord – Jesse Cusack (PI, Oregon State University) – August 2025, Inside Passage, Petersburg, AK and return, [NSF].
- **R/V Tarajoq** – Sermilik Fjord, East Greenland – Fiametta Straneo (PI, UCSD-Scripps Institution of Oceanography, Harvard University) – TBD Dates and Ports, [NSF].

Vessel/Icebreaker Projects: Operating Areas

Arctic Coastal Freeze 2025



<https://www2.whoi.edu/staff/madisonsmith/coastal-freeze/>

AK Coastal CoOp 2025

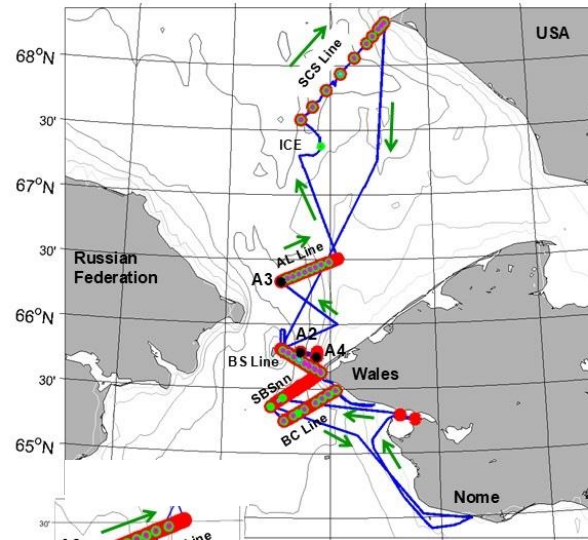


<https://alaskacoastal.org/>



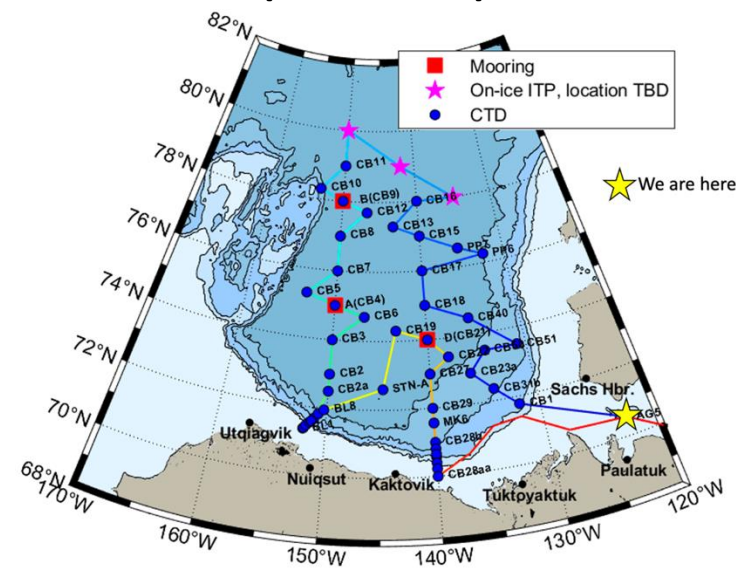
Bering Strait Moorings 2025 (2024 Sites)

Bering Strait 2024 – track=blue, mooring sites= black, stations=color key below



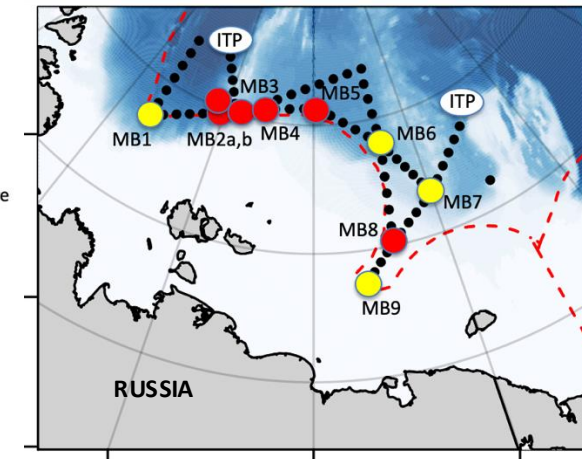
<http://psc.apl.washington.edu/HLD/Bstrait/NorsemanII2024Cruise.html>

JOIS/BGOS 2025 (2024 sites)



<https://www2.whoi.edu/site/beaufortgyre/>

NABOS 2025



- - Moorings for recovery only
- - Moorings for recovery and redeployments

<https://uaf-iarc.org/nabos/>

International infrastructure access

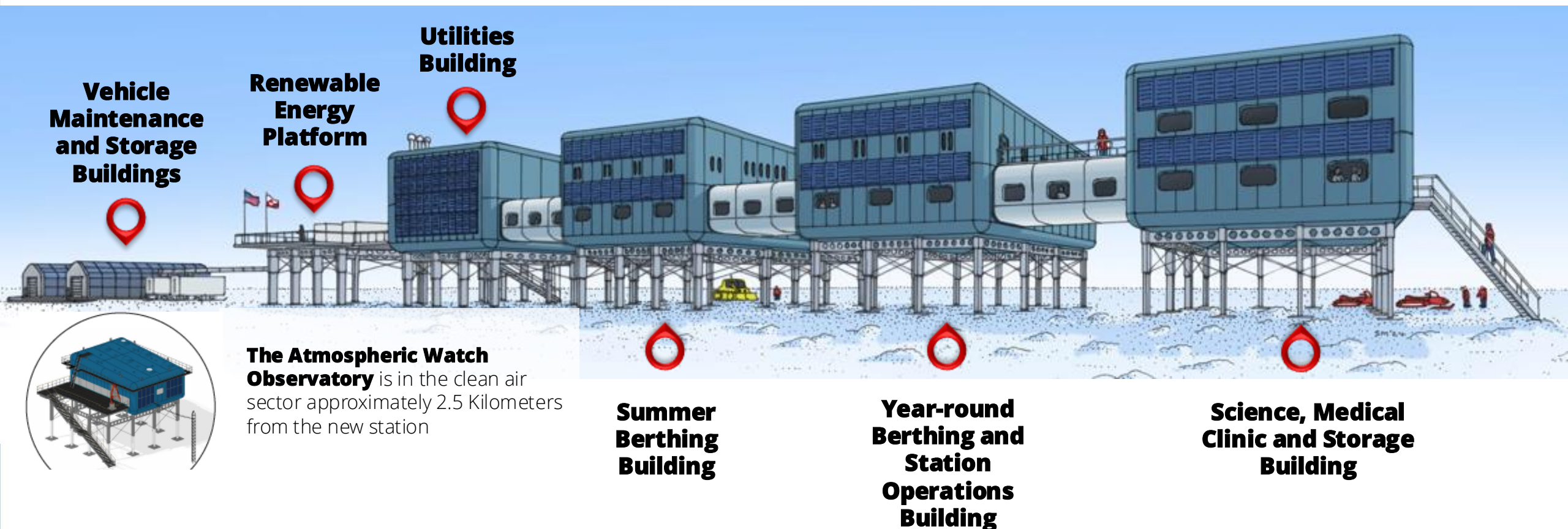
- International collaborations are negotiable at Summit Station and Toolik Field Station, both with reasonable day rates. Long-lead time coordination of planning and proposal preparation will assist with international access options
 - Please contact Battelle ARO and/or Toolik Field Station for more information
- Pituffik Space Base
 - Please contact Kate Ruck at US NSF (kruck@nsf.gov) for more information
- Interactive Map Resources:
<https://battlearcticgateway.org/maps/>

ARMAP (Arctic Research Mapping Application),
Research Cruise Viewer, Alaska Lands Viewer



Summit Modernization & Recapitalization (SuMR) Concept

- This proposed effort replaces 30 existing structures with five elevated buildings and two surface level buildings
- Now at the 60% design stage, SuMR would provide adequate heated indoor science and living space



Contact Information

Frank Rack, U.S. FARO Representative,
Research Support & Logistics Program Manager, RSL@nsf.gov

Jennifer Mercer, Arctic Sciences Section Head, ARCHEAD@nsf.gov

Battelle ARO contact form: https://battlearcticgateway.org/contact_us

Toolik Field Station Contact Page: <https://www.uaf.edu/toolik/about/people.php>